

# 47+/- acres in Floyd County, Georgia

Land For Sale in Cave Spring, GA! 47+/- acres on the Georgia and Alabama line. The property has favorable terrain allowing you to walk the property with ease. The property is bordered on 3 sides by over 1,000 acres of timberland giving this tract a great buffer. The 47+/- acres consists of a good mix of hardwood and pines. There is also fire break on three sides of the property where the timberland property adjoins the 47+/- acres.

There is ample road frontage on George Road giving you options for access into the property. Currently there is no road/drive cut in from George Road but that should be fairly easy to do. The land is mostly flat with some wet weather streams throughout the property. This tract will make a great private tract to build a home or cabin on. There are plenty of signs of wildlife on the property for the hunters and wildlife enthusiasts in the family.

Listed at an affordable price this 47+/- acres is just minutes from Weiss Lake. The property is about 10 minutes to downtown Cave Spring, GA, 20 minutes to Rome, GA and about 1.5 hours from Atlanta, GA.

Shown by appointment only! Do not enter the property with out a Georgia licensed real estate agent. We advise agents and buyers to wear hunter's orange when on the property as there are hunters on the adjoining land. Agents must show their buyers the property to receive their commission split.

**Acreage with Homesite · \$188,000**

**View online at <http://selg.biz/3698>**



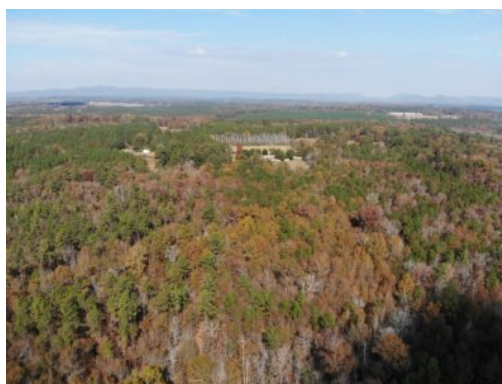
**CHIP WILLIAMS**

chip@selandgroup.com | 1-866-751-LAND | (256) 786-9108





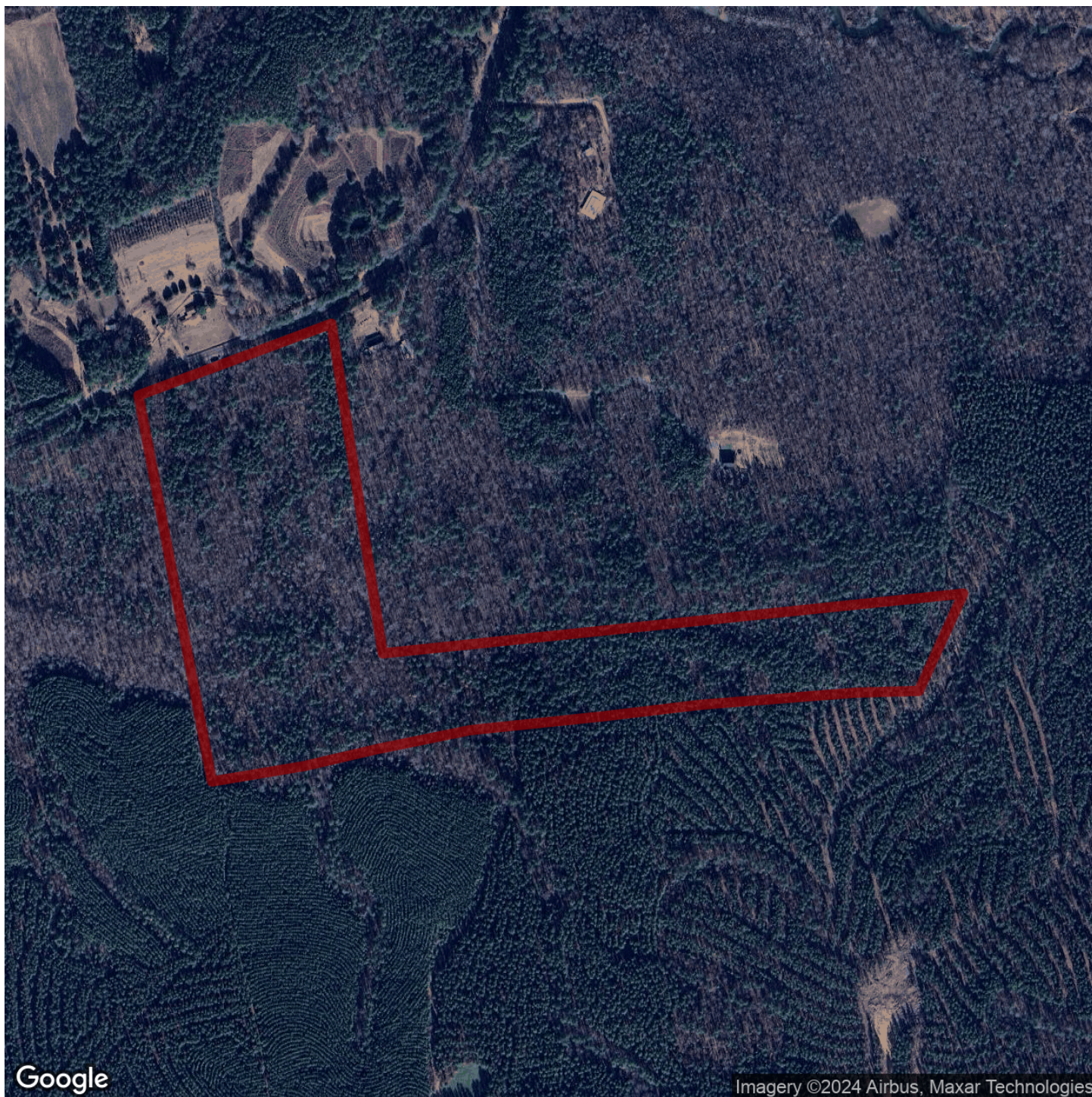
# Southeastern LAND GROUP



**CHIP WILLIAMS**

chip@selandgroup.com | 1-866-751-LAND | (256) 786-9108





**CHIP WILLIAMS**

chip@selandgroup.com | 1-866-751-LAND | (256) 786-9108





**CHIP WILLIAMS**

chip@selandgroup.com | 1-866-751-LAND | (256) 786-9108





**CHIP WILLIAMS**

chip@selandgroup.com | 1-866-751-LAND | (256) 786-9108

