

13+/- acres in Shelby County, Alabama

Rare opportunity to **own 13 waterfront acres in Shelby County**. This property is **covered in beautiful timber** and has over **1200 feet of frontage on the gorgeous Coosa River**. Great potential for **permanent home or a cabin to get away on the weekends**. With **scenic views of the Coosa River and privacy**, this property promises to bring **happiness and relaxation**. Located **5+/- miles from Harpersville and Highway 280**, the access is through a **private, gated entrance into Liberty Shores**. Call John Morris or Scott Mills for **more information**.

Water/Riverfront • \$150,000

View online at <http://selg.biz/6628>



JOHN MORRIS

johnmorris@selandgroup.com | 1-866-751-LAND | (205) 901-9397





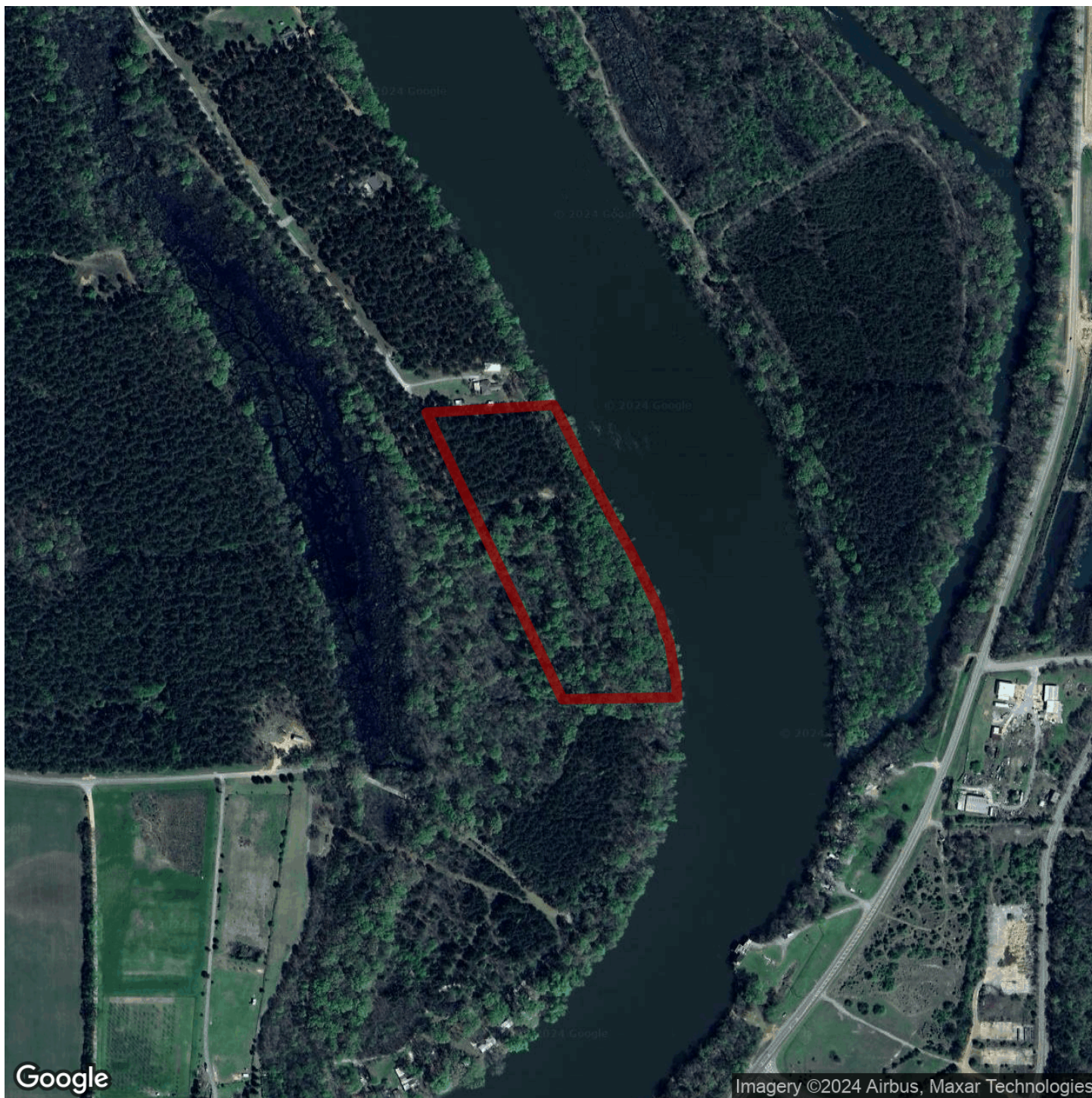
Southeastern
LAND GROUP



JOHN MORRIS

johnmorris@selandgroup.com | 1-866-751-LAND | (205) 901-9397





JOHN MORRIS

johnmorris@selandgroup.com | 1-866-751-LAND | (205) 901-9397

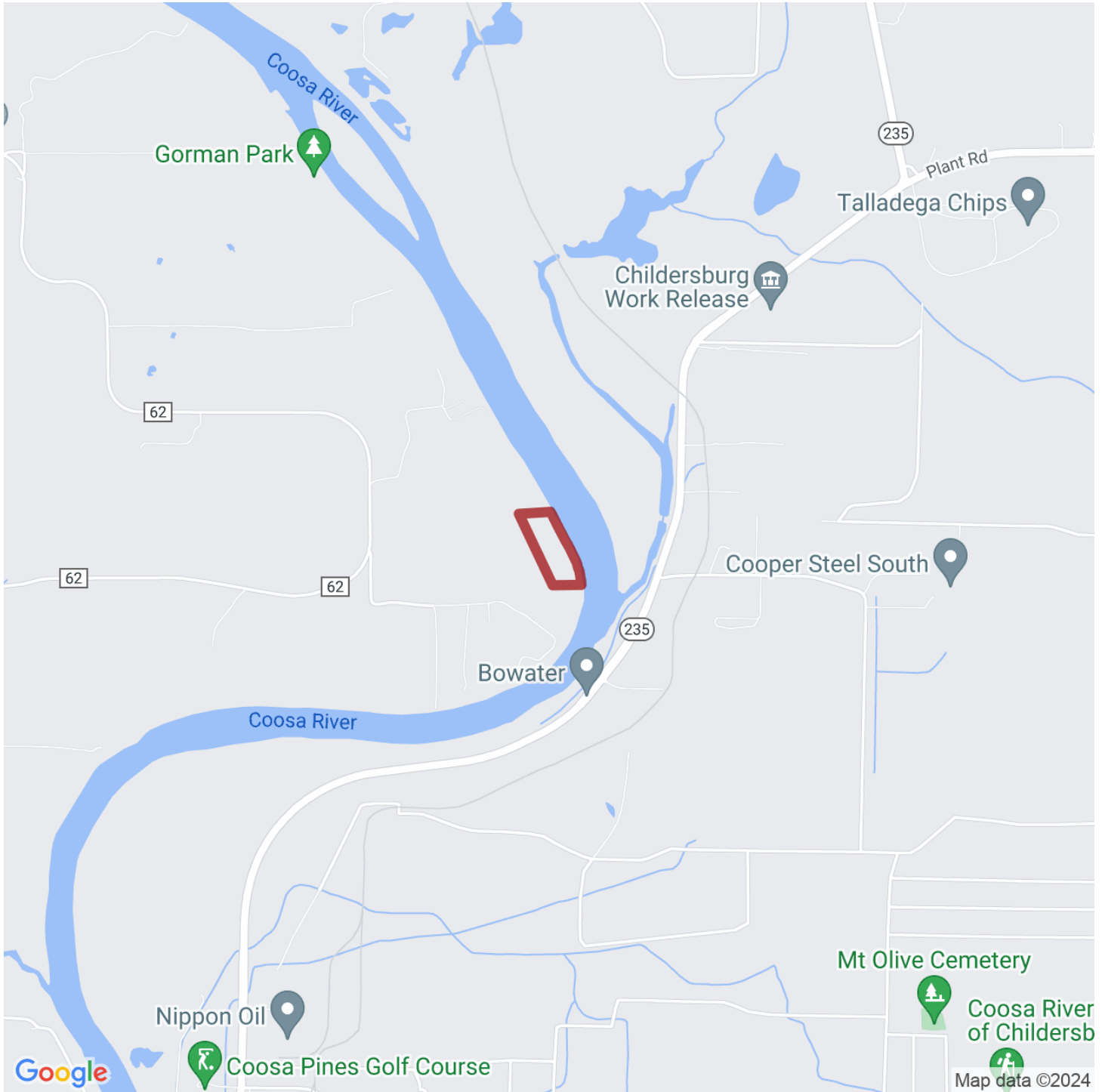




JOHN MORRIS

johnmorris@selandgroup.com | 1-866-751-LAND | (205) 901-9397





JOHN MORRIS

johnmorris@selandgroup.com | 1-866-751-LAND | (205) 901-9397

