

125+/- acres in Blount County, Alabama

The Souls Chapel Tract consist of 125 +/- acres of pine plantation and natural hardwood. The property is just off Highway 75 located between Oneonta and Snead in Blount County. There is a 1 1/2 lake and also a shared lake on the eastern property line. With both deer and turkey in the area this will make a great recreational tract. Part of the property was coal mined around 40 years ago and reclaimed. The pine ranges from 27 to 32 years old. A thinning on the pine and select cut on the hardwood will give a buyer an immediate return on their investment and open up the property to make food plots for the deer. There are some internal roads in place and the road system could be easily expanded. If you are looking for a recreational tract and cabin site for a weekend getaway this tract will work. Well located within an hour or less of both Birmingham and Huntsville. Shown strictly by appointment only.

Timberland • \$399,900

View online at <http://selg.biz/9078>



MATT BURNETT

matt@selandgroup.com | 1-866-751-LAND | (256) 572-1474

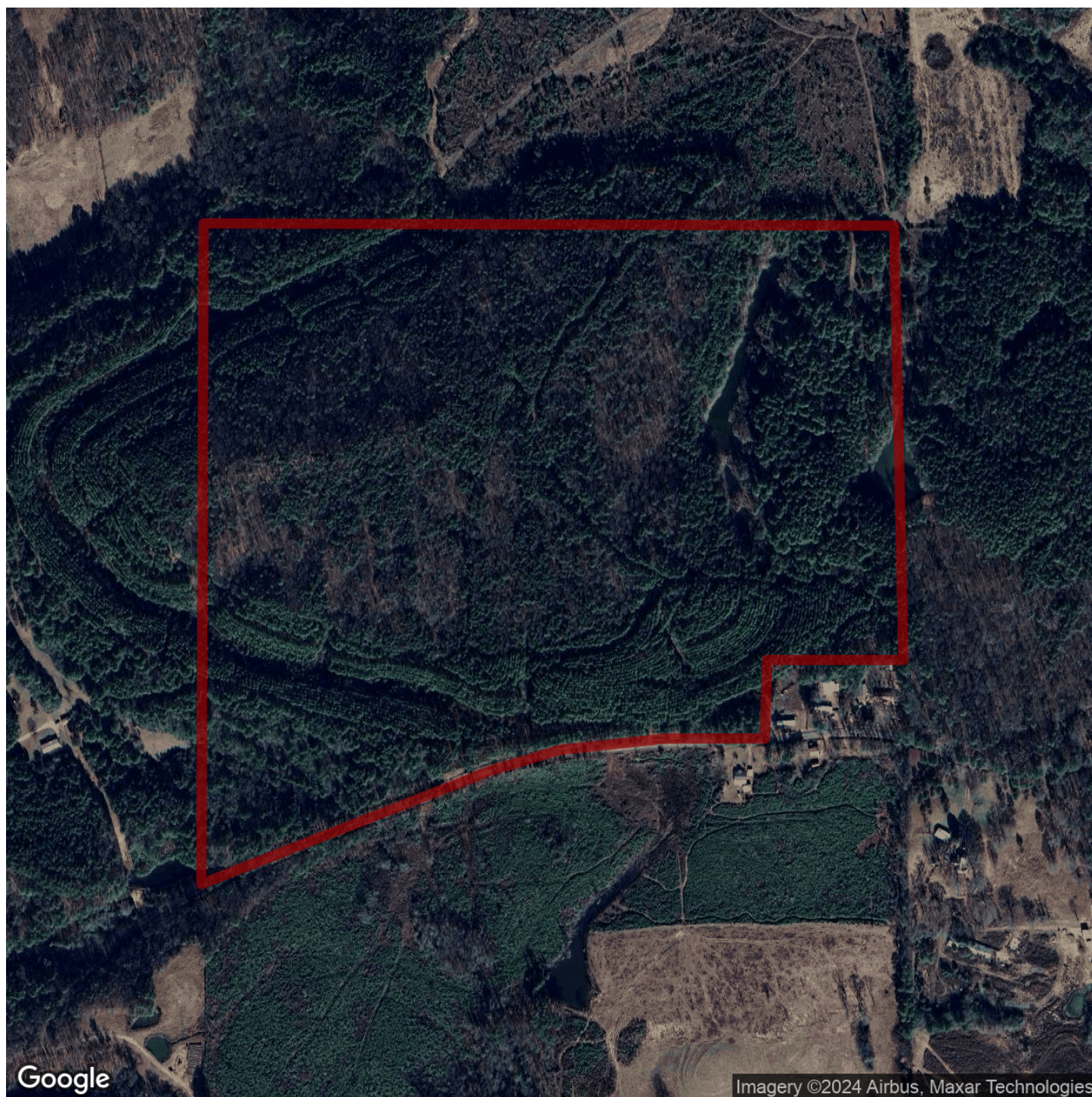




MATT BURNETT

matt@selandgroup.com | 1-866-751-LAND | (256) 572-1474





MATT BURNETT

matt@selandgroup.com | 1-866-751-LAND | (256) 572-1474

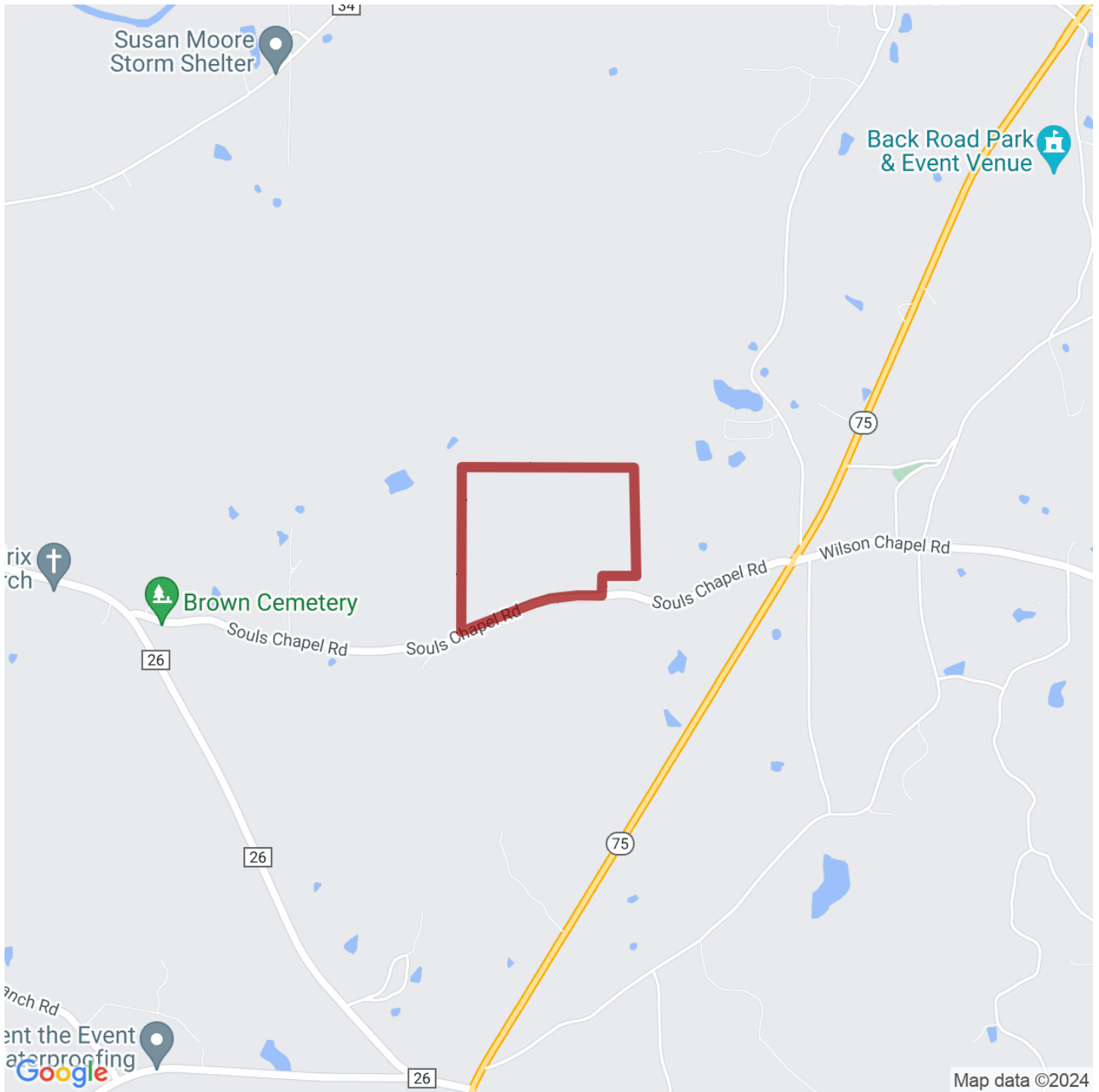




MATT BURNETT

matt@selandgroup.com | 1-866-751-LAND | (256) 572-1474





MATT BURNETT

matt@selandgroup.com | 1-866-751-LAND | (256) 572-1474

