

# 310+/- acres in Winston County, Alabama

New to the market is 310+/- Acres in south Winston County known as "Kaiser Bottom Farm".

Located in the Poplar Springs community, Kaiser Bottom Farm is a turnkey recreational and hunting tract.

A camp house (complete with well water, power, septic, and gas) as you enter the property off of Rocky Plains Rd sets up shop for weekend hunts. Topography is gentle to rolling and gives you the feel of being in two completely different tracts as you transition from grassy pine uplands to hardwood timber surrounding Browns Creek. Pine portions could be burned and converted into quail plantation and there are even rumored to be 3 wild coveys on the farm now!

Several strategic food plots and shooting houses can be found for the deer and turkey hunter. Browns creek provides year round water with over a mile of frontage on the farm. Two ponds also provide opportunity to fish.

This one truly has everything for the outdoorsman:

- 100+/- Acres of pine uplands
- 200+/- Acres hardwood bottoms
- Camp house with power, well water, septic, gas
- Good internal road system covering entire property
- Healthy deer and turkey population
- Over a mile of Browns Creek Frontage
- 2 ponds
- Highline transmission towers with long lines of site for deer hunting
- Over 10 large food plots with shooting houses
- 40' x60' Pole Barn for tractor and implements

Kaiser Bottom Farm is located 1 hour from Birmingham metro area and 1 hour 45 minutes from Huntsville,



**Southeastern**  
LAND GROUP



and is easily accessible for day trip hunts or a weekend getaway. The farm is priced at 2240/per acre. For more information or to set up a showing contact Peyton Littrell or Josh Milton today!

**Hunting · \$695,000**

**View online at <http://selg.biz/6146>**

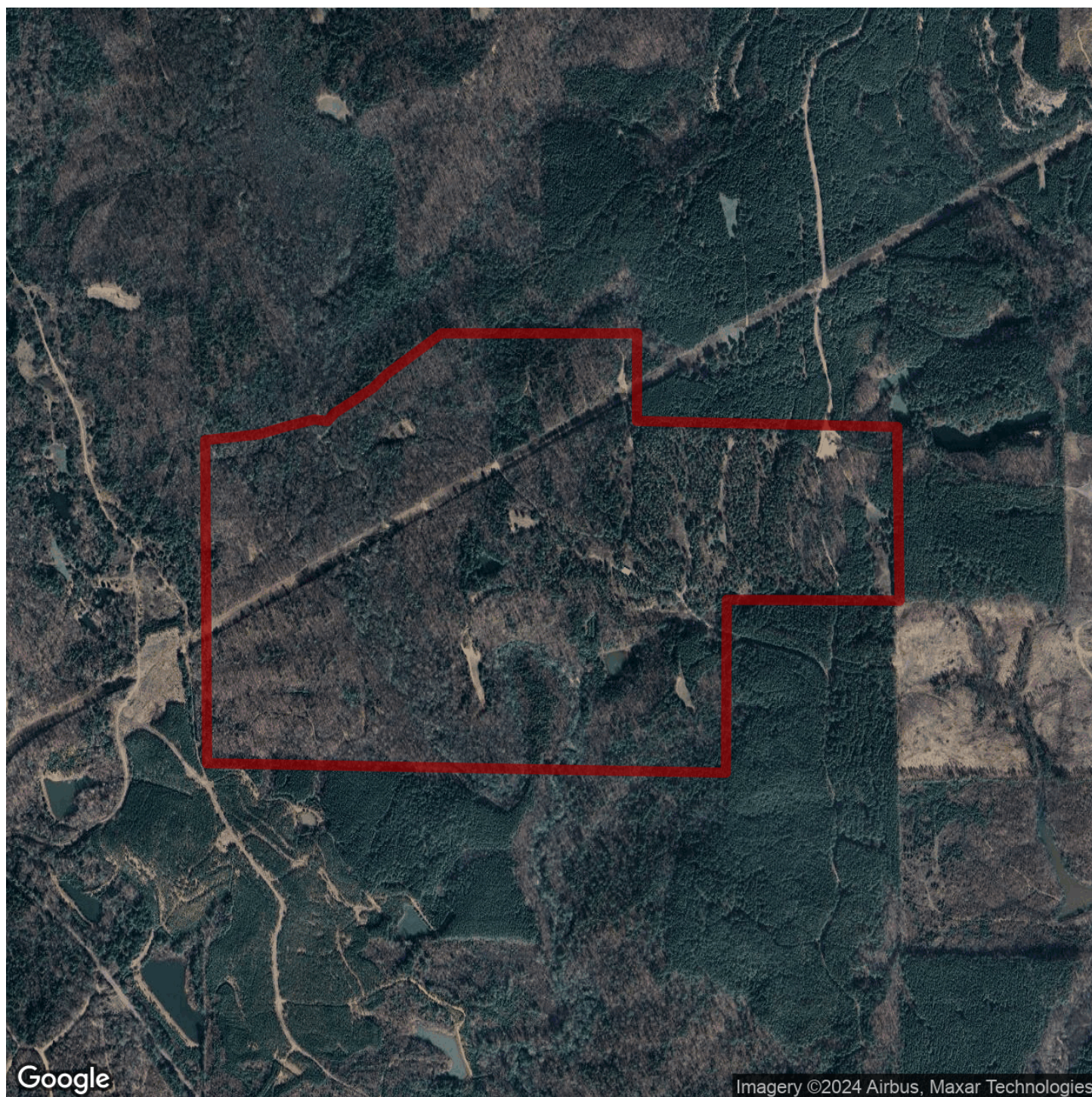
[selandgroup.com](http://selandgroup.com) | 1-866-751-LAND











Google

Imagery ©2024 Airbus, Maxar Technologies

[selandgroup.com](https://selandgroup.com) | 1-866-751-LAND





