

.55+/- acres in Clay County, Alabama

Located in the city limits of Ashland, AL. 2,139 +/- square foot home on .55+/- acres.

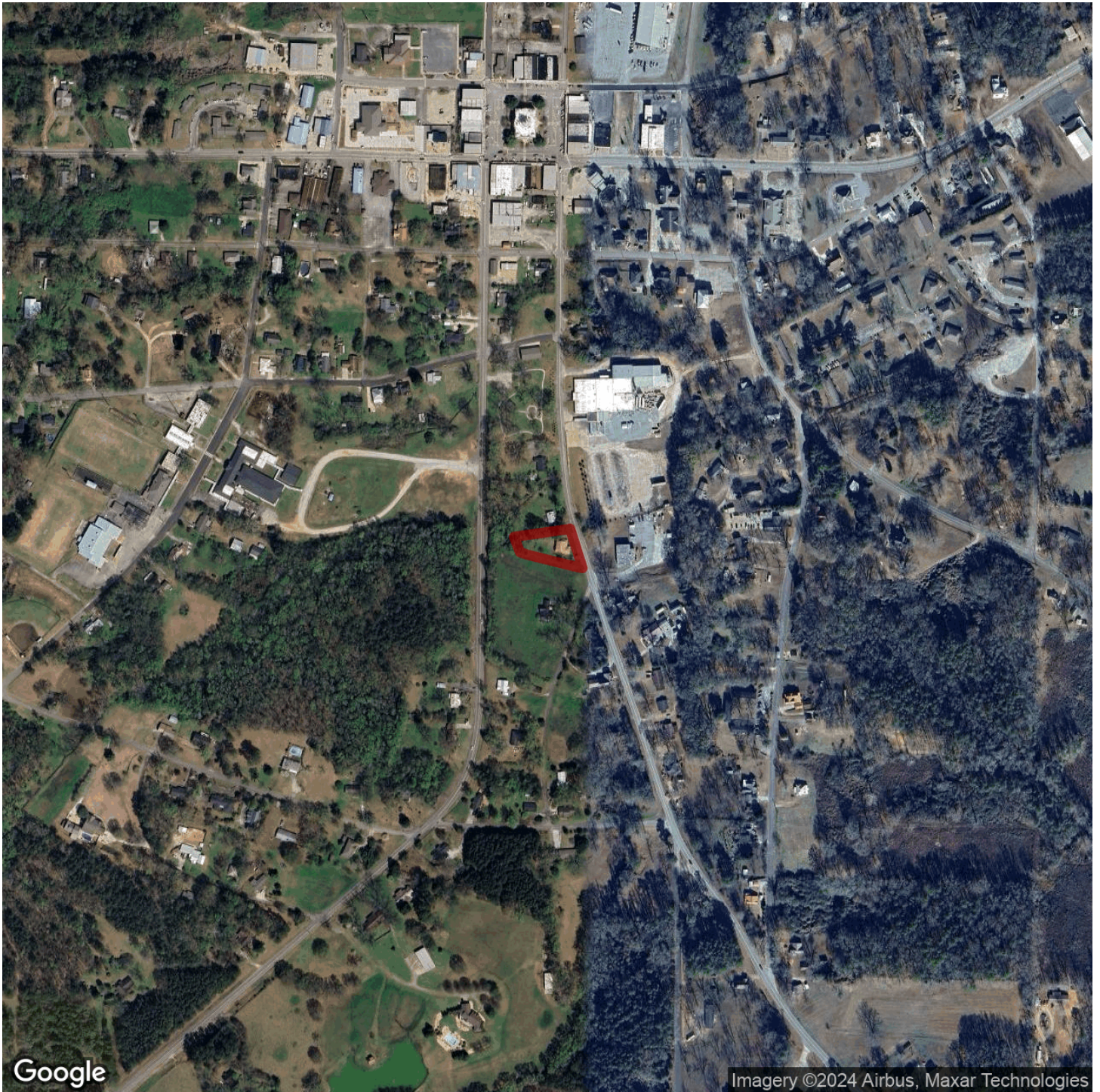
This home has 3 bedrooms, 2 full baths, large laundry/utility room, living room, dining room, large eat-in kitchen, and sunroom. Large covered front porch with ramp for entry and the front yard in fenced. The back yard is large and flat, with room to add a carport, garage or back deck.

This property must be sold as is and will need a little TLC but it offers a lot of charm and space plus the convenience of city utilities.

Land With Home • \$85,000

View online at <http://selg.biz/0293>





Google

Imagery ©2024 Airbus, Maxar Technologies

selandgroup.com

1-866-751-LAND



