

# 12+/- acres in Elmore County, Alabama

**If you are in search of a quiet place to build your home, please take a look at this!** It is **12+/- acres** and is **fully wooded**, has **multiple homesites** on it and is **minutes from town**. With a **flat**

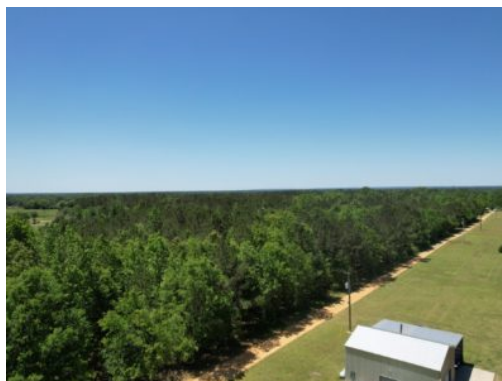
**topography**, this property promises a variety of opportunities for your vision of a home place to come true on a beautiful, quiet, wooded 12+/- acres. It is just 20+/- miles to downtown

Montgomery, 23+/- miles to Prattville and 5+/- miles to Wetumpka. Please take advantage of this opportunity to build your home on a

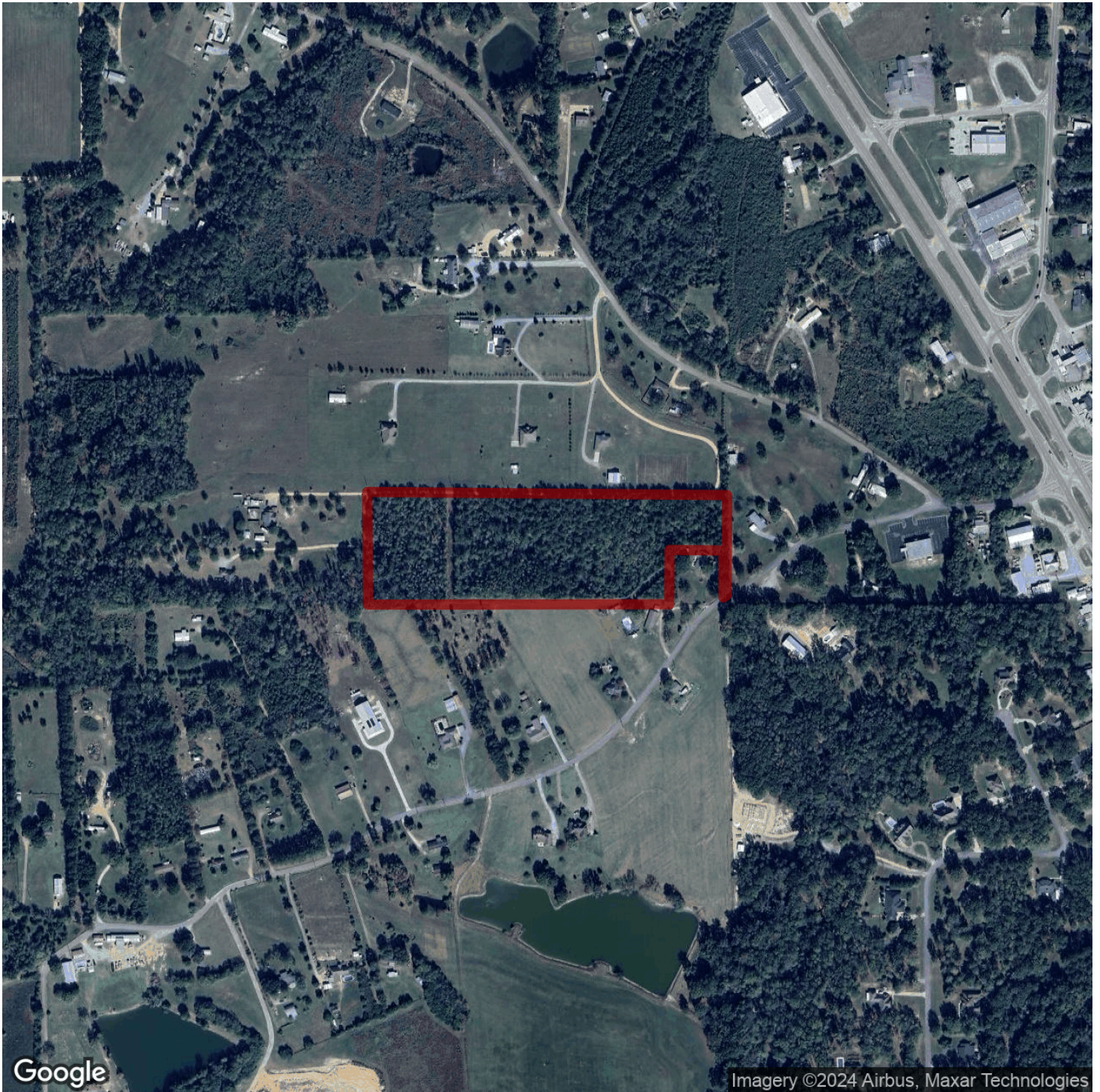
**beautiful, peaceful, country property, convenient to town**. Please call me for any questions or to view the property. **Scott Mills 334-300-6663**

**Acreage with Homesite · \$148,500**  
**View online at <http://selg.biz/8279>**









Google

Imagery ©2024 Airbus, Maxar Technologies

[selandgroup.com](http://selandgroup.com)

1-866-751-LAND





