

# 11.7+/- acres in Coffee County, Alabama

This ±11.7 acres mini farm is located in the Newbia Community of Coffee County in the Zion Chapel School District has everything you need to build your dream home in the country! The tract has paved road frontage along County Road 306 with Electricity and Water available. This tract is mostly level topography with a nice stand of 10 year old pine plantation. This property is located ±11 miles from the Zion Chapel School, ±13 miles from Elba and ±23 miles from Troy.

To schedule your viewing call Calvin Perryman at 334-419-7277.

**Mini farm • \$52,000**

**View online at <http://selg.biz/3546>**



**CALVIN PERRYMAN**

calvin@selandgroup.com | 1-866-751-LAND | (334) 419-7277



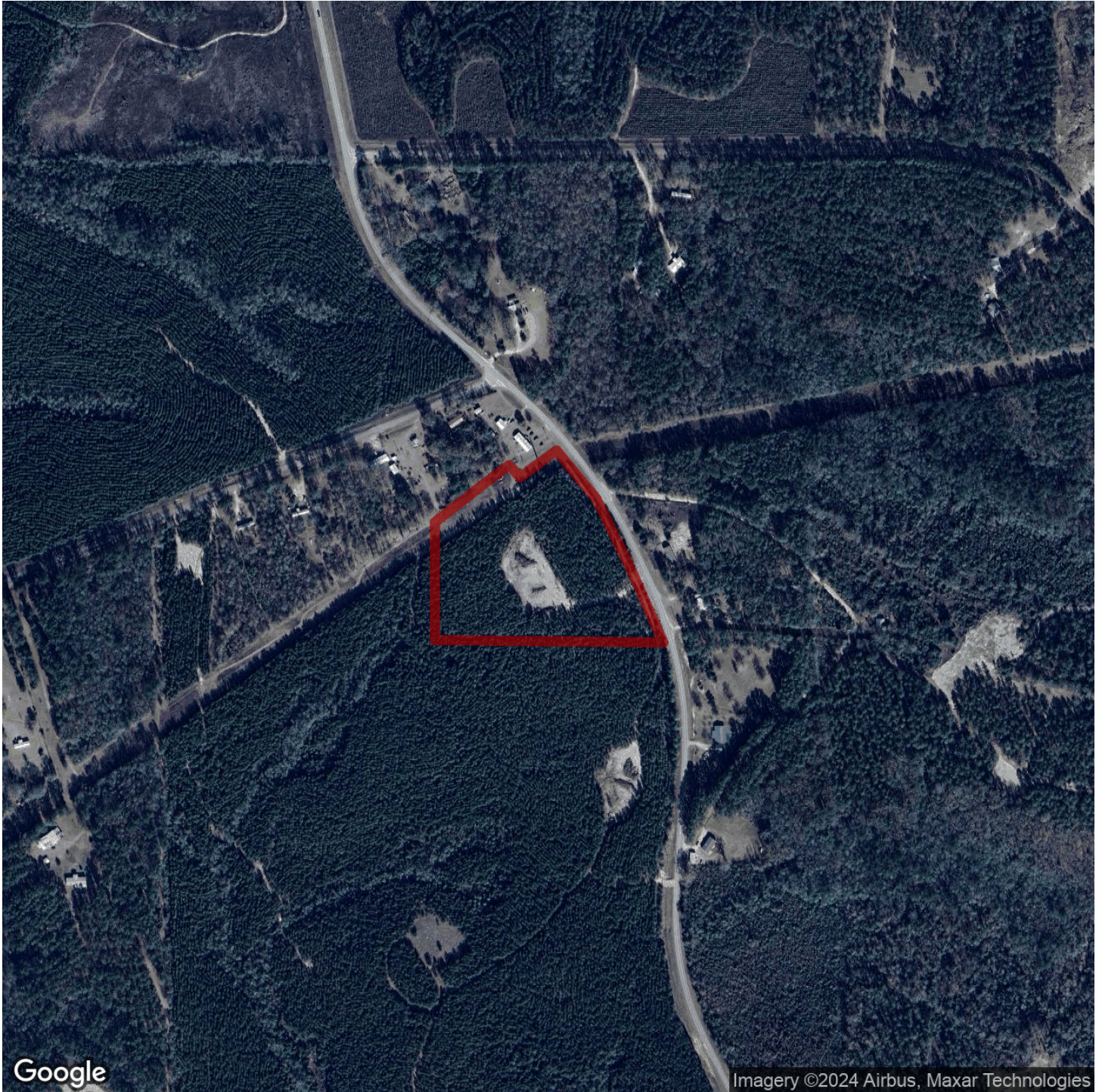


**CALVIN PERRYMAN**

calvin@selandgroup.com | 1-866-751-LAND | (334) 419-7277







Google

Imagery ©2024 Airbus, Maxar Technologies



**CALVIN PERRYMAN**

calvin@selandgroup.com | 1-866-751-LAND | (334) 419-7277







**CALVIN PERRYMAN**

calvin@selandgroup.com | 1-866-751-LAND | (334) 419-7277







**CALVIN PERRYMAN**

calvin@selandgroup.com | 1-866-751-LAND | (334) 419-7277

