

9.5+/- acres in Lee County, Alabama

Exquisite 9.5-Acre Property with Cleared Home Site, Pasture Potential, and Paved Road Frontage in Beauregard, AL, near Auburn

Property Overview: Welcome to this exceptional 9.5-acre gem located in the serene Beauregard community, 25 minutes away from Auburn, Alabama. This picturesque property presents a remarkable opportunity for those seeking a peaceful and spacious retreat. With a cleared home site and driveway, the stage is set for your dream home. The lush landscape offers the potential for pasture, providing ample space for livestock or recreational activities. Boasting paved road frontage and county water, this property offers both convenience and rural charm.

Key Features:

Land size: 9.5 acres (approx.)

Location: Beauregard, AL, near Auburn

Cleared home site: A generous area is already cleared, ready for your vision to come to life.

Driveway: A convenient driveway has been prepared for easy access to your future residence.

Pasture potential: Embrace the opportunity to establish your own pasture or utilize the land for various recreational activities.

Paved road frontage: Enjoy direct access from a paved road, ensuring ease of transportation and convenience.

County water: Access to county water supply for hassle-free living and potential irrigation needs.

Location: This fantastic property is situated in the charming community of Beauregard, Alabama. Beauregard offers a peaceful, rural atmosphere while being in close proximity to the bustling city of Auburn. Benefit from the tranquility of country living while enjoying convenient access to the amenities, dining, shopping, and entertainment options available in Auburn.

Whether you envision a captivating homestead, an equestrian haven, or a private oasis to create cherished memories, this expansive 9.5-acre property provides a canvas for your dreams to unfold. Don't miss this opportunity to secure your own slice of paradise in the desirable Beauregard area near Auburn, AL. Act now and embrace the possibilities that await you!



Southeastern
LAND GROUP

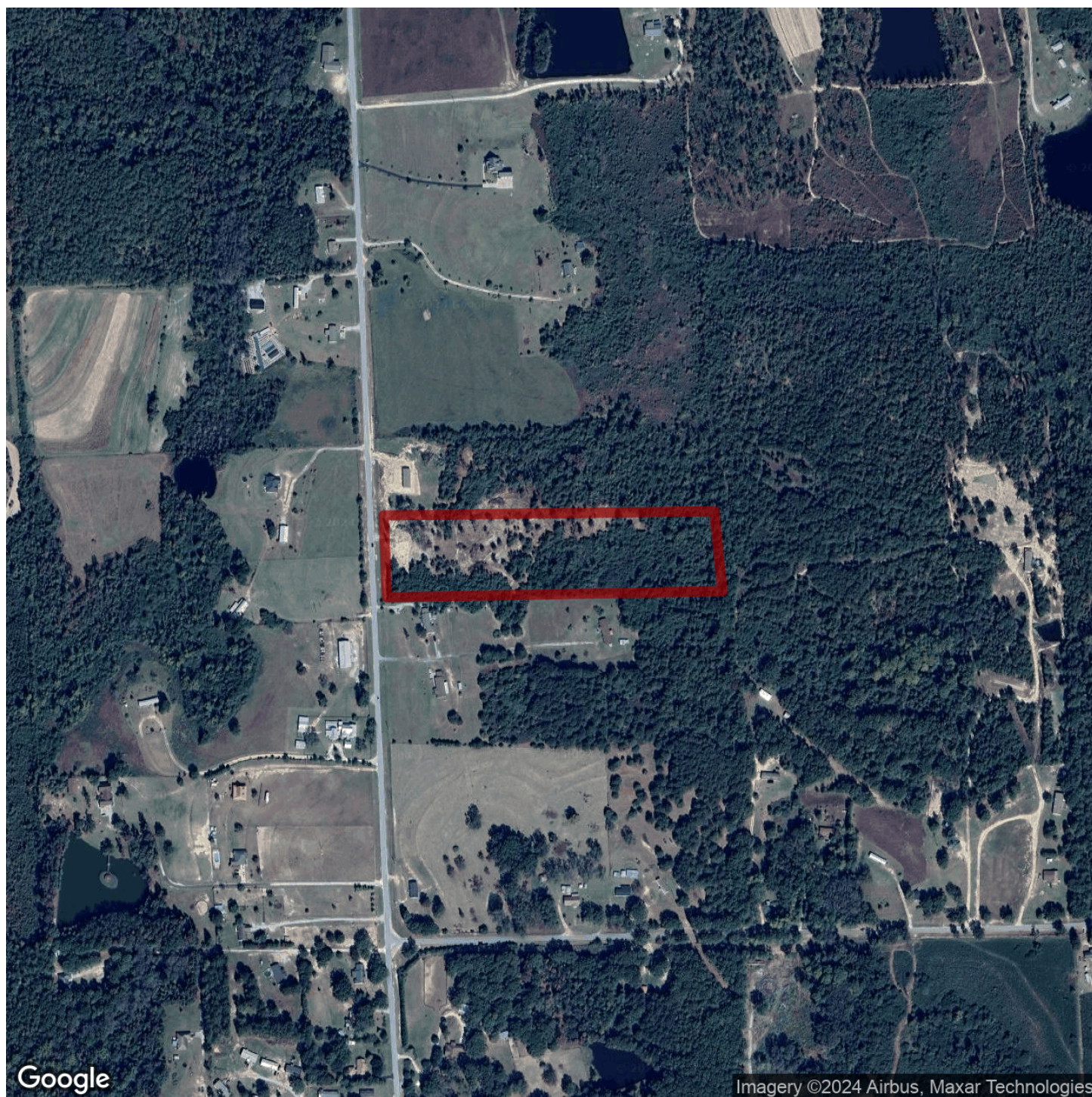


Acreage with Homesite · \$125,000
View online at <http://selg.biz/8521>

selandgroup.com | 1-866-751-LAND







Google

Imagery ©2024 Airbus, Maxar Technologies

selandgroup.com

1-866-751-LAND





