

# 15.7+/- acres in Coffee County, Alabama

This ±15.7 acre mini farm is located in the Newbia Community of Coffee County in the Zion Chapel School District has everything you need to build your dream home in the country! The tract has paved road frontage along County Road 306 with Electricity and Water available. This tract is mostly level topography with a nice stand of 10 year old pine plantation. There is a game plot on the back side of the property along with a nice internal road system. This property is located ±11 miles from the Zion Chapel School, ±13 miles from Elba and ±23 miles from Troy. To schedule your viewing call Calvin Perryman at 334-419-7277.

**Mini farm • \$67,000**

**View online at <http://selg.biz/2004>**



**CALVIN PERRYMAN**

calvin@selandgroup.com | 1-866-751-LAND | (334) 419-7277





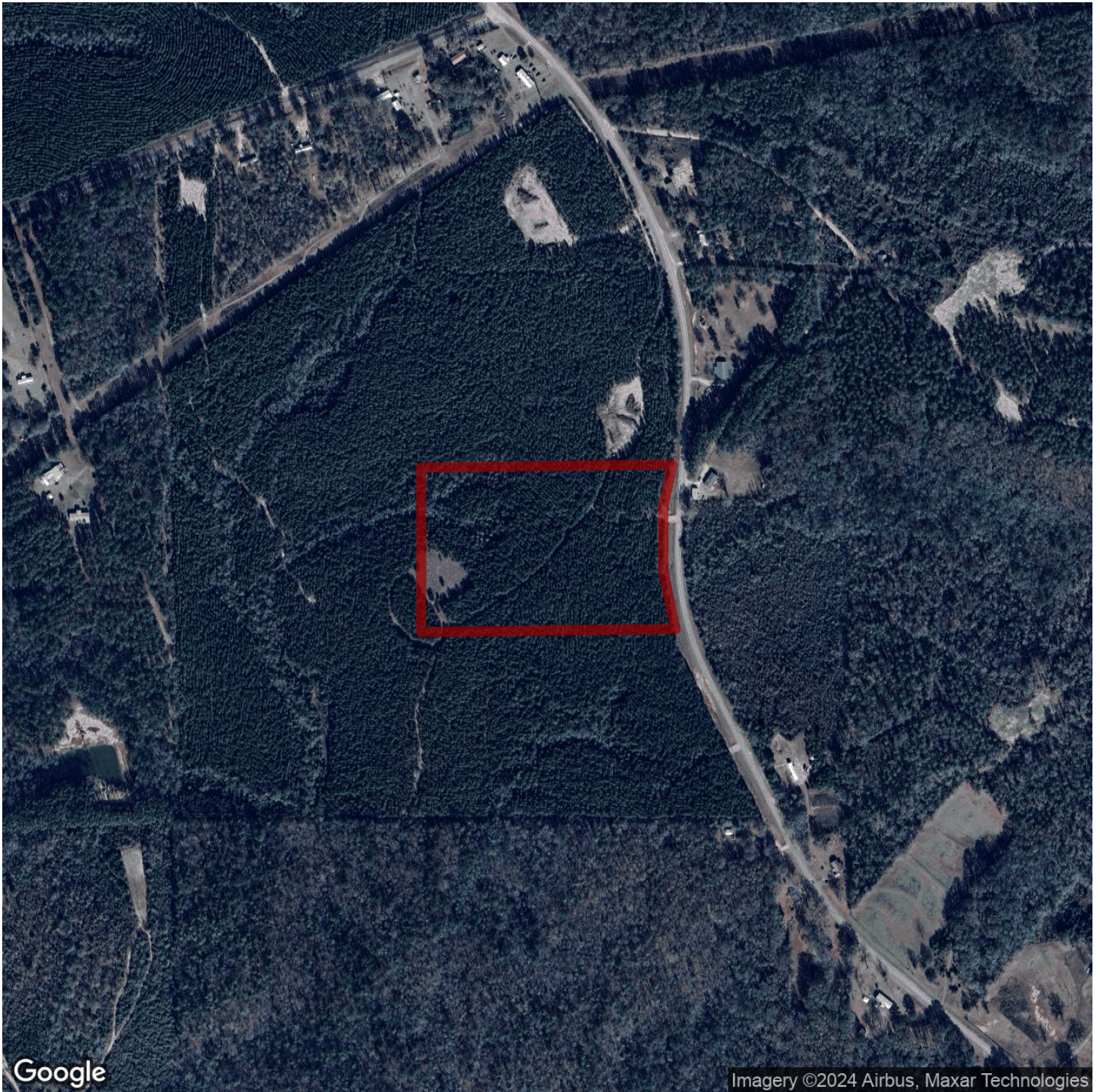
Southeastern  
LAND GROUP



**CALVIN PERRYMAN**

calvin@selandgroup.com | 1-866-751-LAND | (334) 419-7277





**CALVIN PERRYMAN**

calvin@selandgroup.com | 1-866-751-LAND | (334) 419-7277





**CALVIN PERRYMAN**

calvin@selandgroup.com | 1-866-751-LAND | (334) 419-7277





**CALVIN PERRYMAN**

calvin@selandgroup.com | 1-866-751-LAND | (334) 419-7277

