

16.9+/- acres in Coffee County, Alabama

This ±16.9 acre mini farm is located in the Newbia Community of Coffee County in the Zion Chapel School District has everything you need to build your dream home in the country! The tract has paved road frontage along County Road 306 with Electricity and Water available. This tract is slightly rolling topography with a nice stand of 10 year old pine plantation. This property is located ±11 miles from the Zion Chapel School, ±13 miles from Elba and ±23 miles from Troy.

To schedule your viewing call Calvin Perryman at 334-419-7277.

Mini farm • \$70,000

View online at <http://selg.biz/6805>



CALVIN PERRYMAN

calvin@selandgroup.com | 1-866-751-LAND | (334) 419-7277

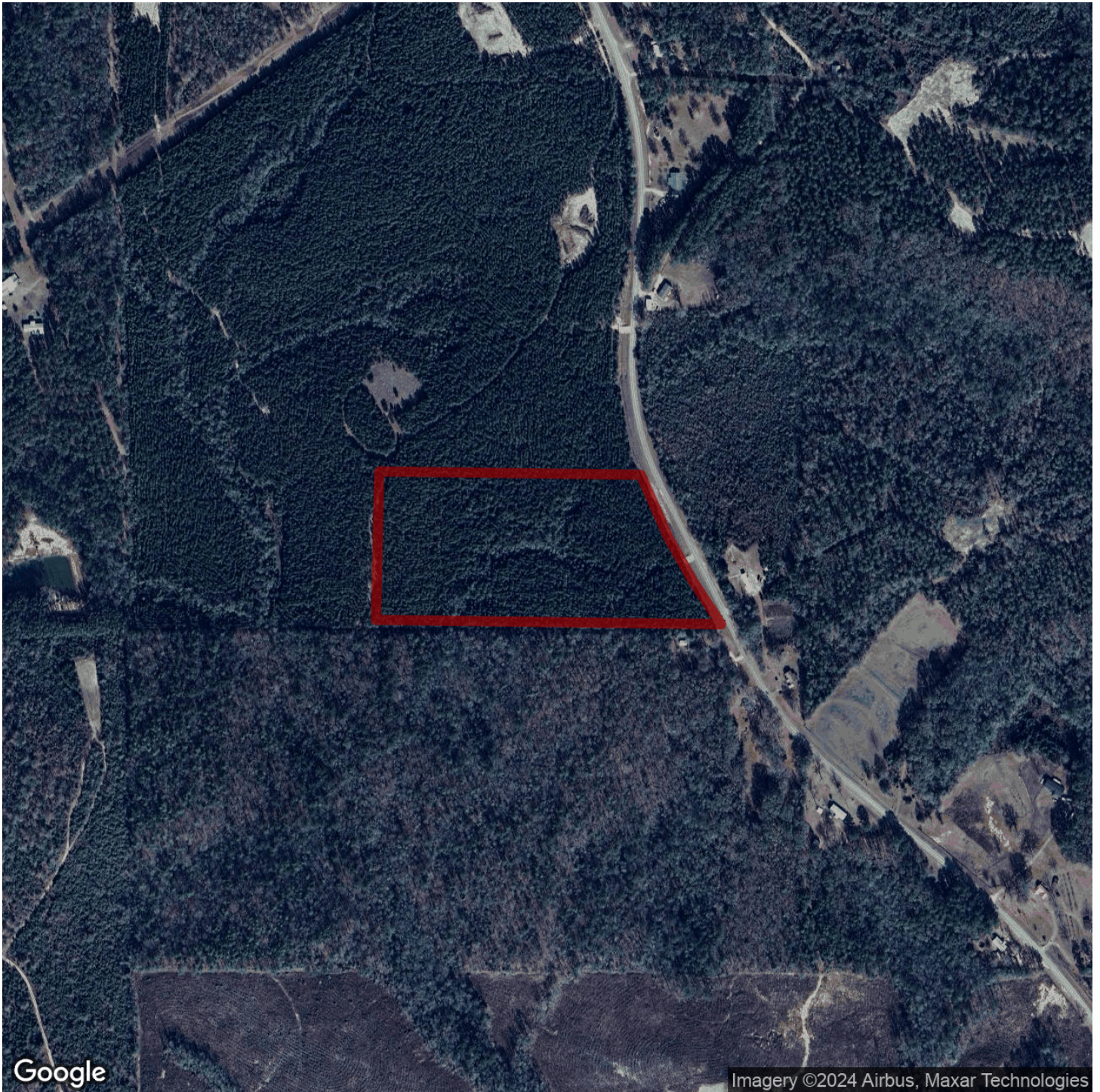




CALVIN PERRYMAN

calvin@selandgroup.com | 1-866-751-LAND | (334) 419-7277





Google

Imagery ©2024 Airbus, Maxar Technologies



CALVIN PERRYMAN

calvin@selandgroup.com | 1-866-751-LAND | (334) 419-7277





CALVIN PERRYMAN

calvin@selandgroup.com | 1-866-751-LAND | (334) 419-7277





CALVIN PERRYMAN

calvin@selandgroup.com | 1-866-751-LAND | (334) 419-7277

