

134.98+/- acres in Chambers County, Alabama

135+/- acres located in Chambers Co, AL, just west of LaFayette. This tract has mature stands of hardwood that run throughout the creek bottoms. There is also a younger stand of planted pines, approximately 60 acres that were planted in 2019. There is a main road that traverses the rolling topography and leads you to a nice flowing creek. There are several areas that allow for multiple deer stands to be placed throughout the property. If this is something you are looking for, give us a call and make an appointment to view this great tract.

Timberland • \$432,000

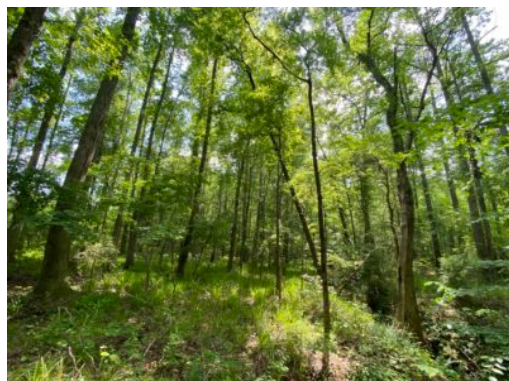
View online at <http://selg.biz/5525>



JOHN HARDIN

johnhardin@selandgroup.com | 1-866-751-LAND | (229) 886-1417





JOHN HARDIN

johnhardin@selandgroup.com | 1-866-751-LAND | (229) 886-1417

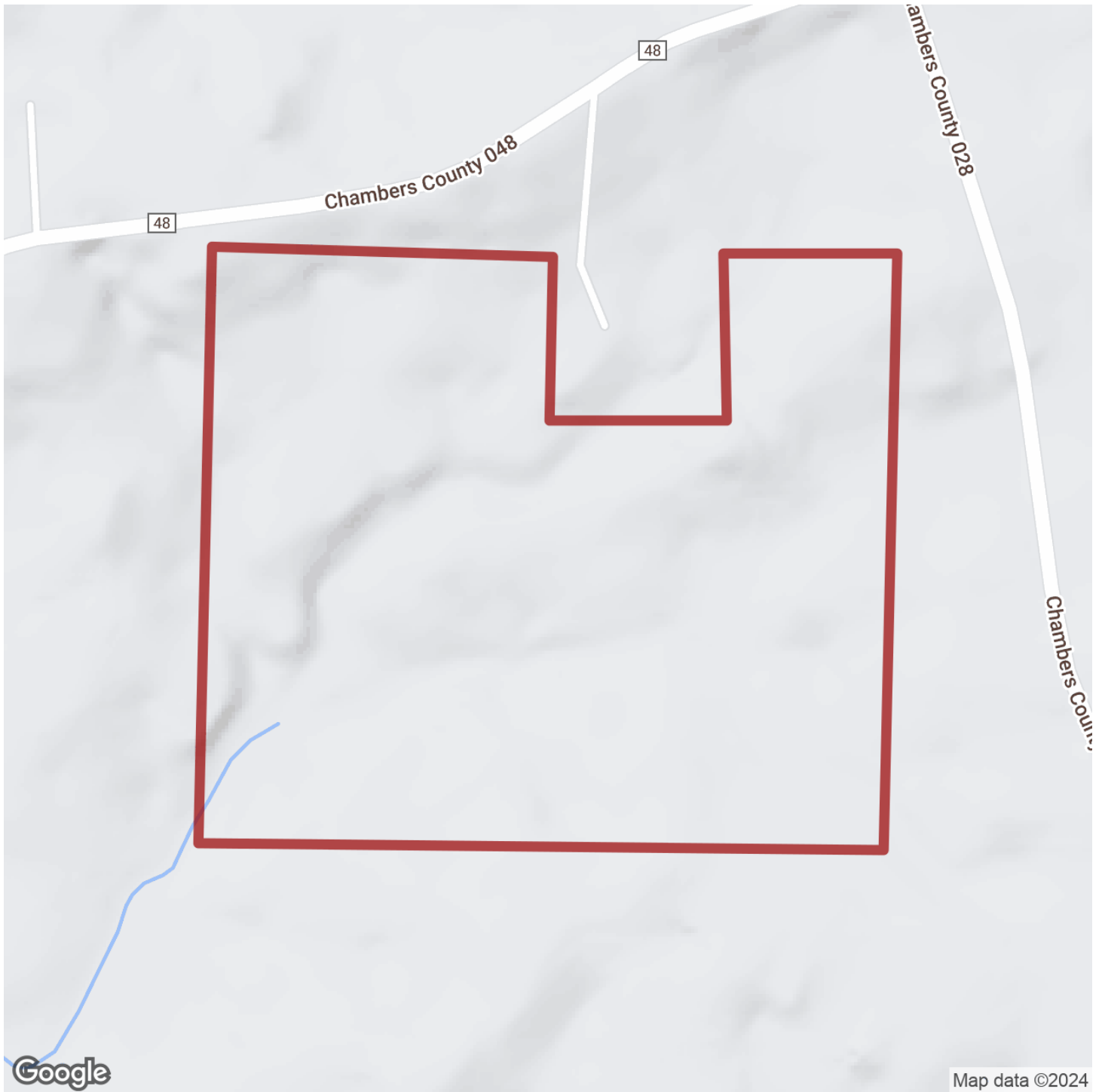




JOHN HARDIN

johnhardin@selandgroup.com | 1-866-751-LAND | (229) 886-1417

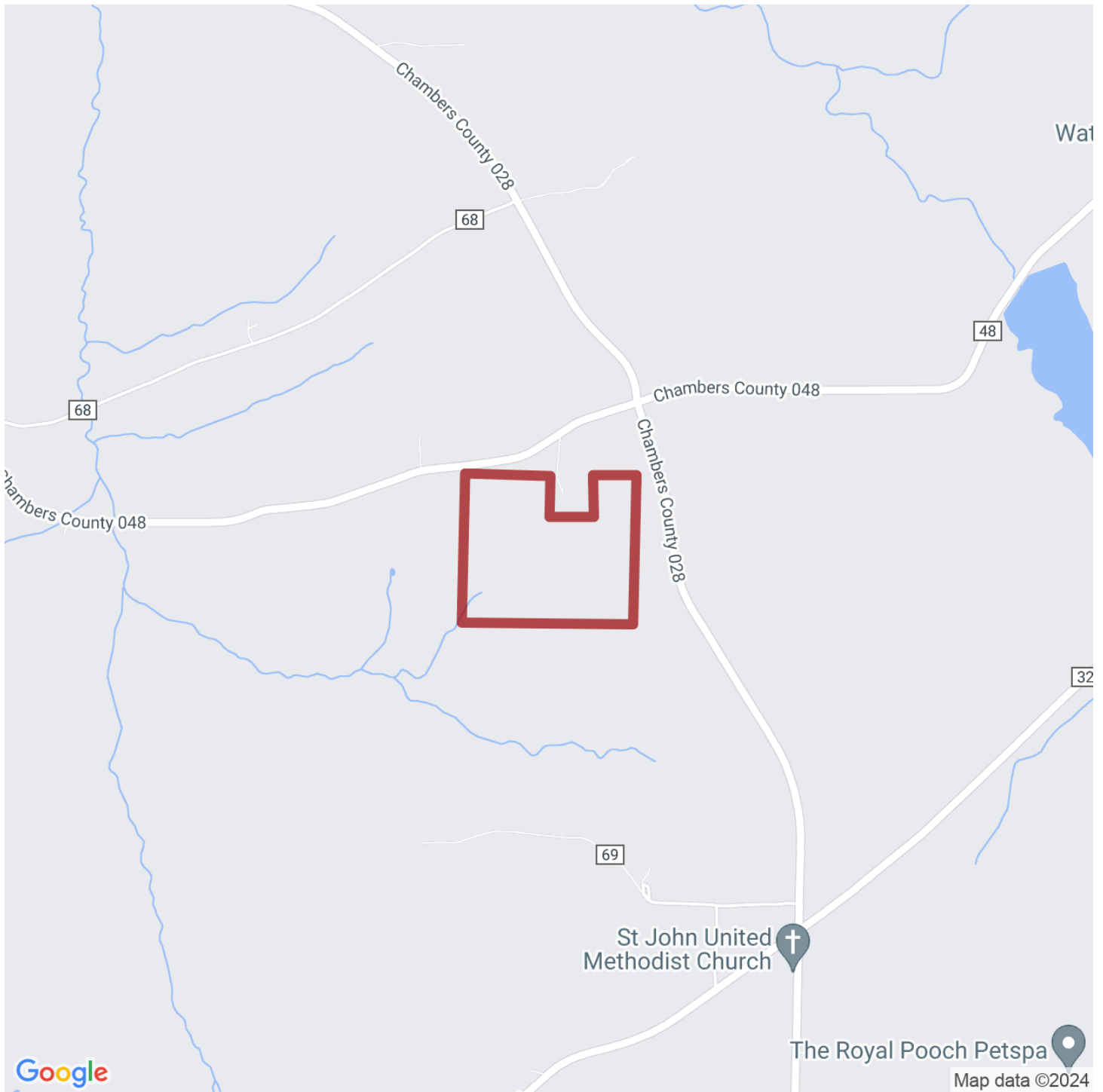




JOHN HARDIN

johnhardin@selandgroup.com | 1-866-751-LAND | (229) 886-1417





JOHN HARDIN

johnhardin@selandgroup.com | 1-866-751-LAND | (229) 886-1417

