

16+/- acres in Chilton County, Alabama

SOLD!! This property is located on C.R. 173 in Chilton County just SE of Calera. County Rd 173 is a county maintained dirt road with power available at the road. The timber was recently cut on this tract. There is a creek that will be the northern boarder of the tract with mature trees along that SMZ. This would make a great mini farm or a place to build a home in the country.

Mini farm • \$40,000

View online at <http://selg.biz/3280>



JEFF HARDY

jeff@selandgroup.com | 1-866-751-LAND | (256) 749-3950

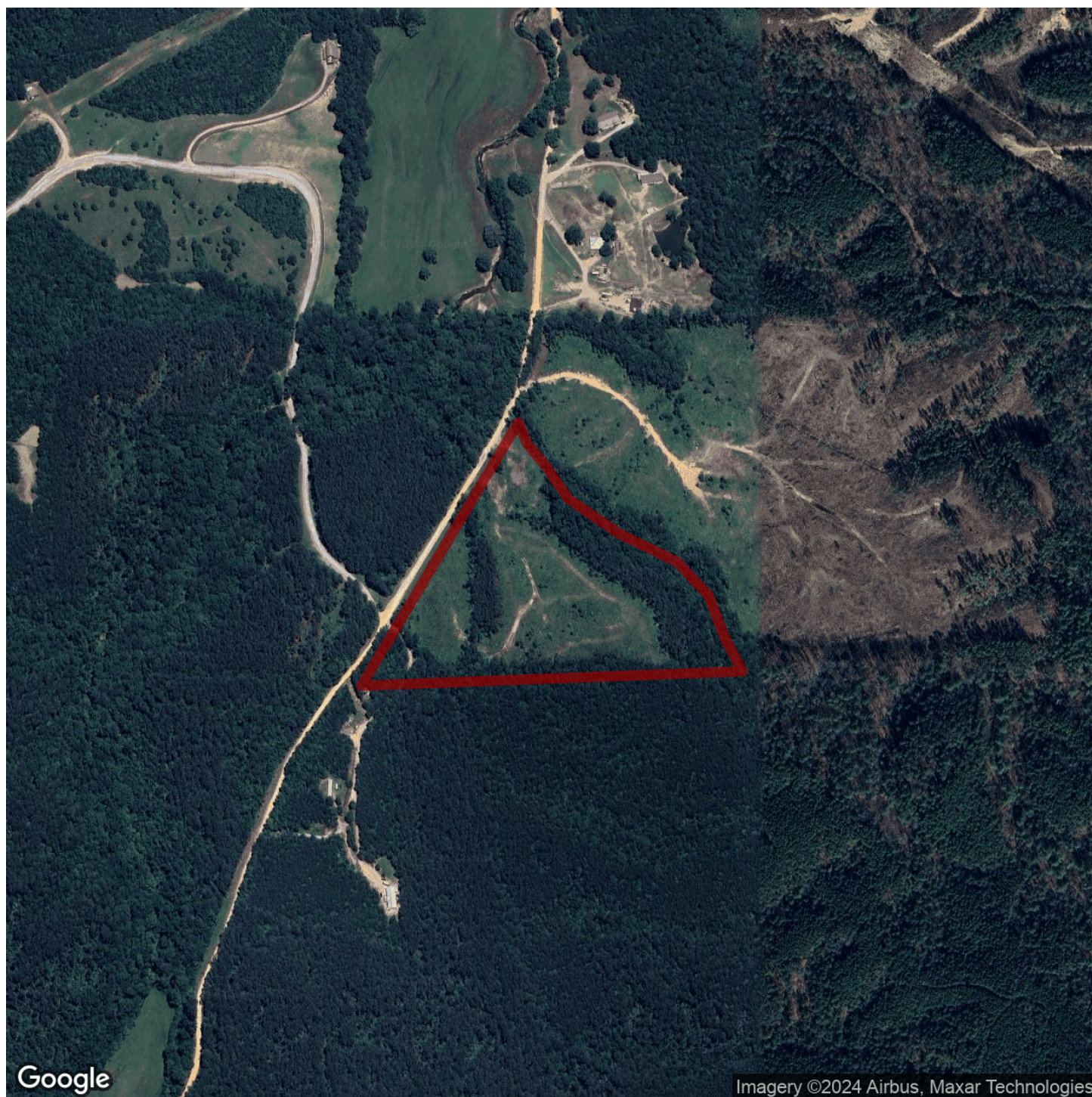




JEFF HARDY

jeff@selandgroup.com | 1-866-751-LAND | (256) 749-3950





Google

Imagery ©2024 Airbus, Maxar Technologies



JEFF HARDY

jeff@selandgroup.com | 1-866-751-LAND | (256) 749-3950





JEFF HARDY

jeff@selandgroup.com | 1-866-751-LAND | (256) 749-3950





JEFF HARDY

jeff@selandgroup.com | 1-866-751-LAND | (256) 749-3950

