

5+/- acres in Lee County, Alabama

Nestled within the peaceful Timber Creek subdivision, a remarkable and rare opportunity awaits on this picturesque wooded lot. Located just 21 miles from Auburn's Toomer's Corner and a mere 15 miles from the renowned East Alabama Medical Center, this secluded haven strikes the perfect balance between convenience and tranquility. This land, located in a cul-de-sac, is a short 7.5 miles from EAMC-Lanier, with easy access to I-85 only 6 miles away, essential services and travel are within effortless reach. This exclusive acreage represents the final chance to craft a dream home in the natural beauty of the surrounding woodland. Embrace this rare opportunity to build your sanctuary, an ideal location amidst the serenity and privacy of Timber Creek.

Acreage with Homesite · \$49,900

View online at <http://selg.biz/4348>



JOHN HARDIN

johnhardin@selandgroup.com | 1-866-751-LAND | (229) 886-1417

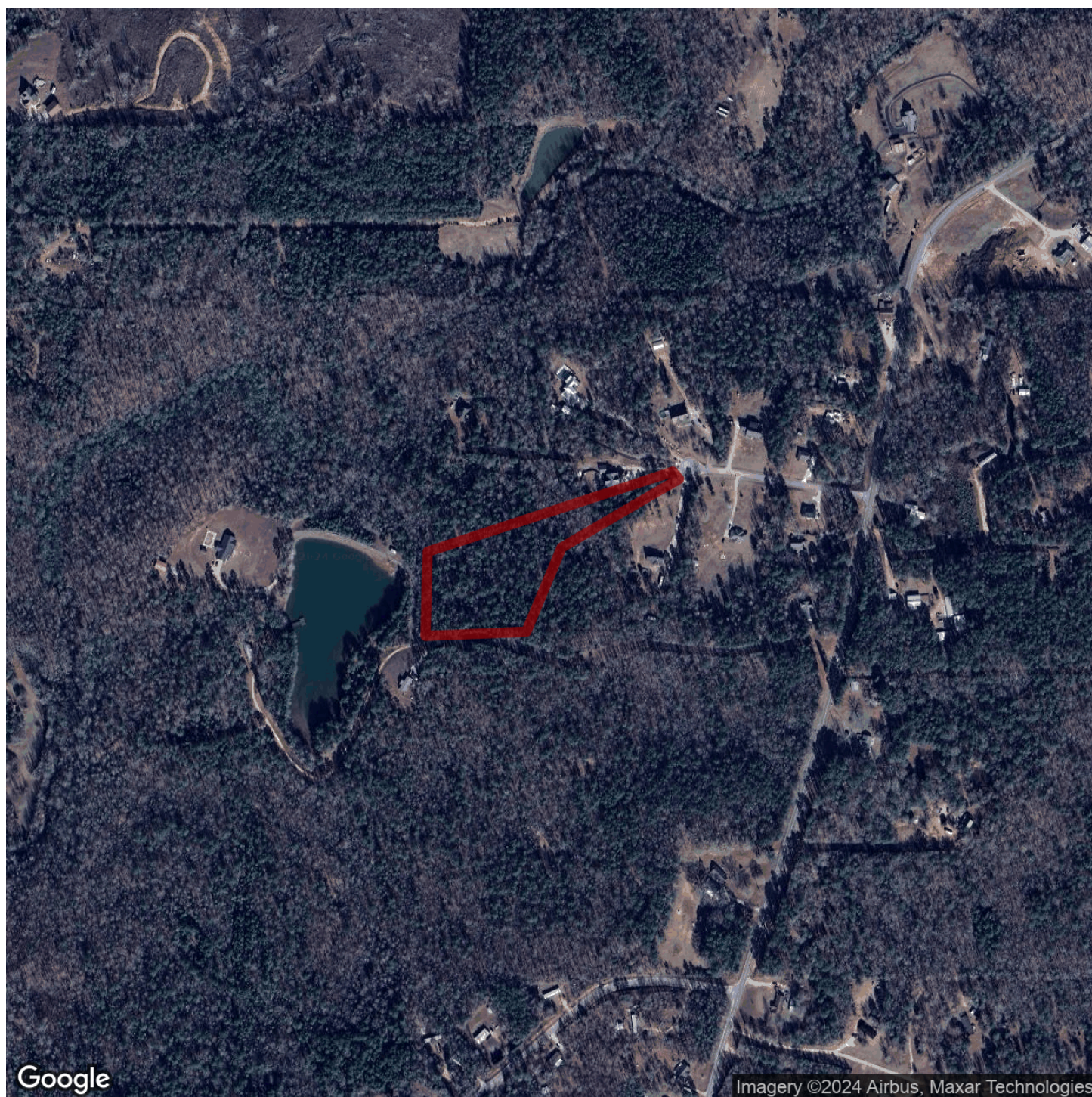




JOHN HARDIN

johnhardin@selandgroup.com | 1-866-751-LAND | (229) 886-1417

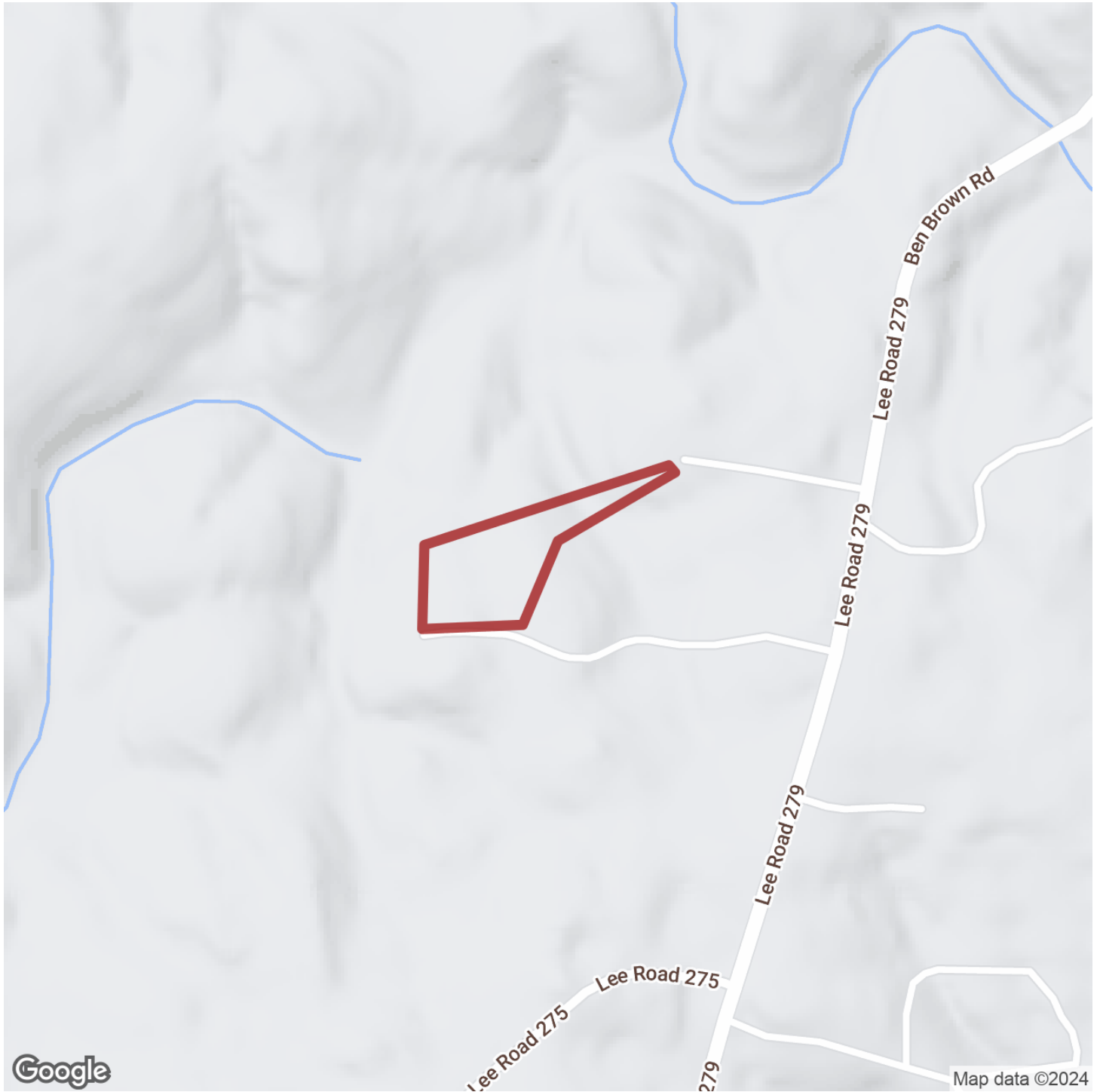




JOHN HARDIN

johnhardin@selandgroup.com | 1-866-751-LAND | (229) 886-1417

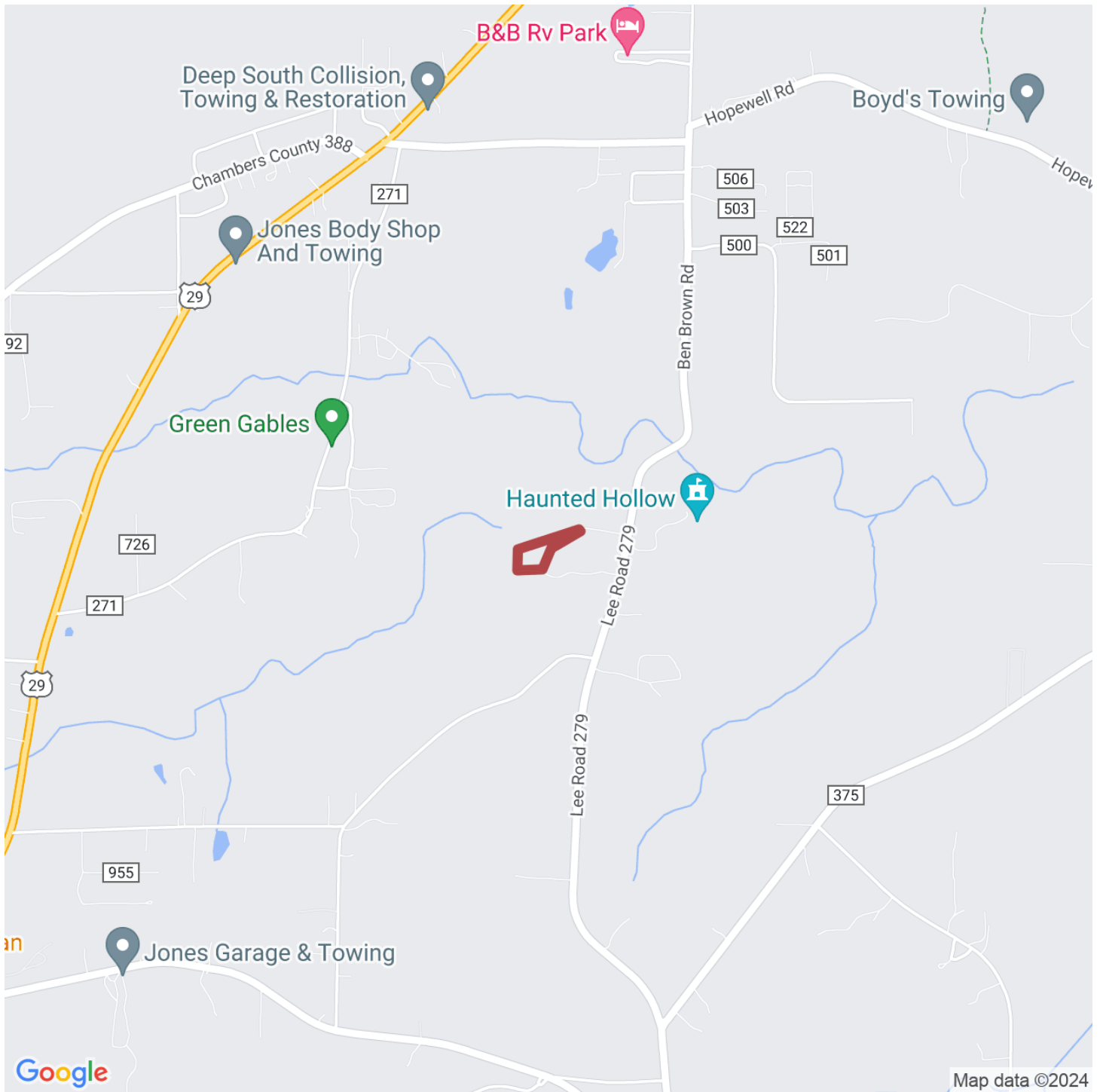




JOHN HARDIN

johnhardin@selandgroup.com | 1-866-751-LAND | (229) 886-1417





JOHN HARDIN

johnhardin@selandgroup.com | 1-866-751-LAND | (229) 886-1417

