

115+/- acres in Clay County, Alabama

115 +/- Acres of great possibilities. Located on Bull Gap Road, in the Hollins Community of Clay County, this tract consists of a once thinned pine plantation, with beautiful streams flowing through the property. The streams are buffered on both sides, with beautiful hardwoods of various species, including white oak and red oak species, great for wildlife and hunting.

The property has a gentle rolling topography, with paved road frontage, and power access. Approximately 23 acres is on the left side of the road, while the remaining balance of acreage is on the right side of the road.

It is approximately an hour to Auburn, an hour to Birmingham metro area, and about 30 minutes to beautiful Lake Martin.

Give Brian Watts or Robert King a call to schedule your showing of this great property.

Timberland • \$316,000

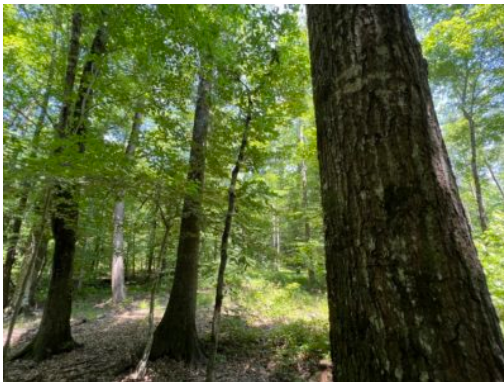
View online at <http://selg.biz/5795>



BRIAN WATTS

brian@selandgroup.com | 1-866-751-LAND | (334) 707-4273

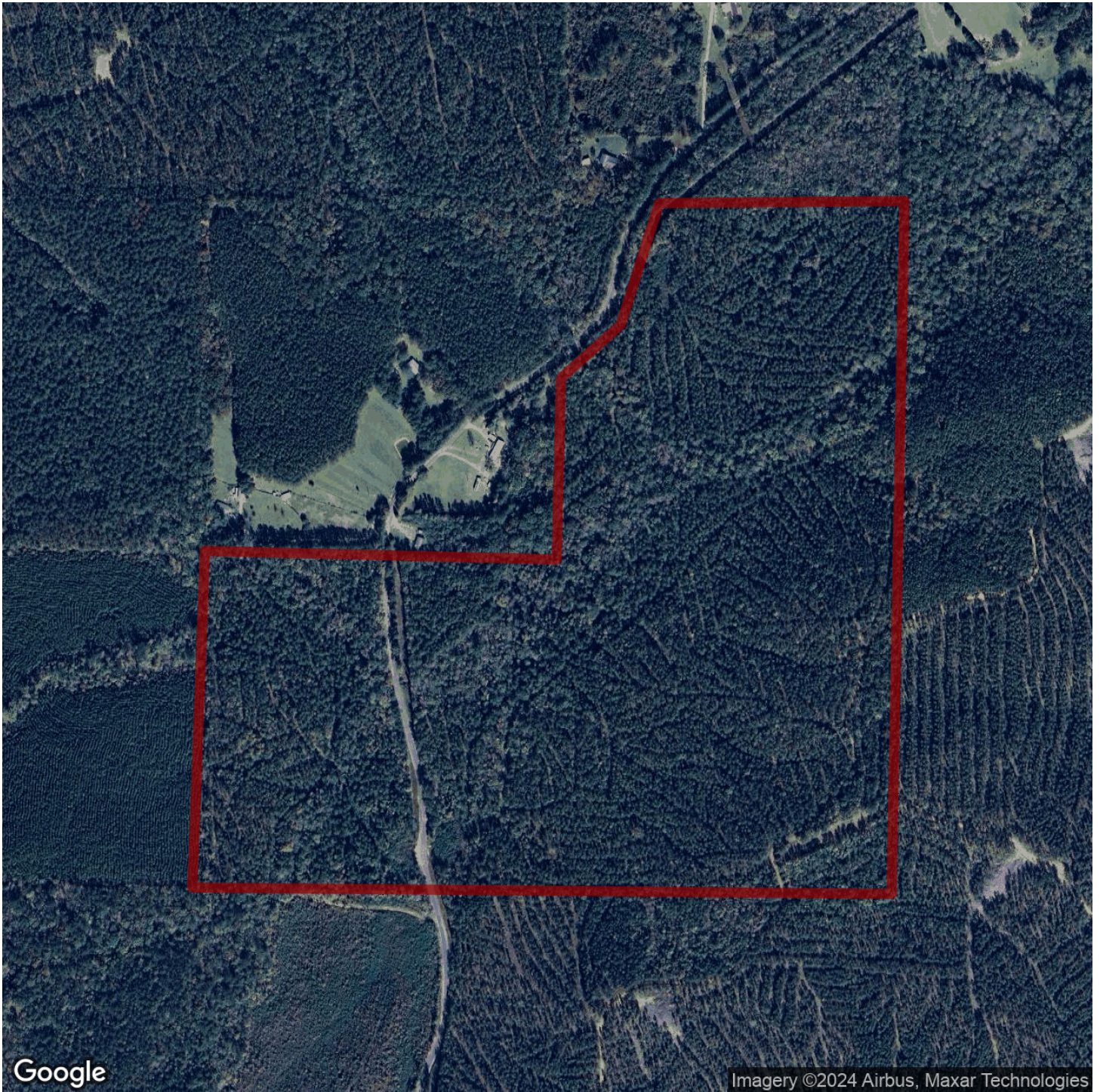




BRIAN WATTS

brian@selandgroup.com | 1-866-751-LAND | (334) 707-4273

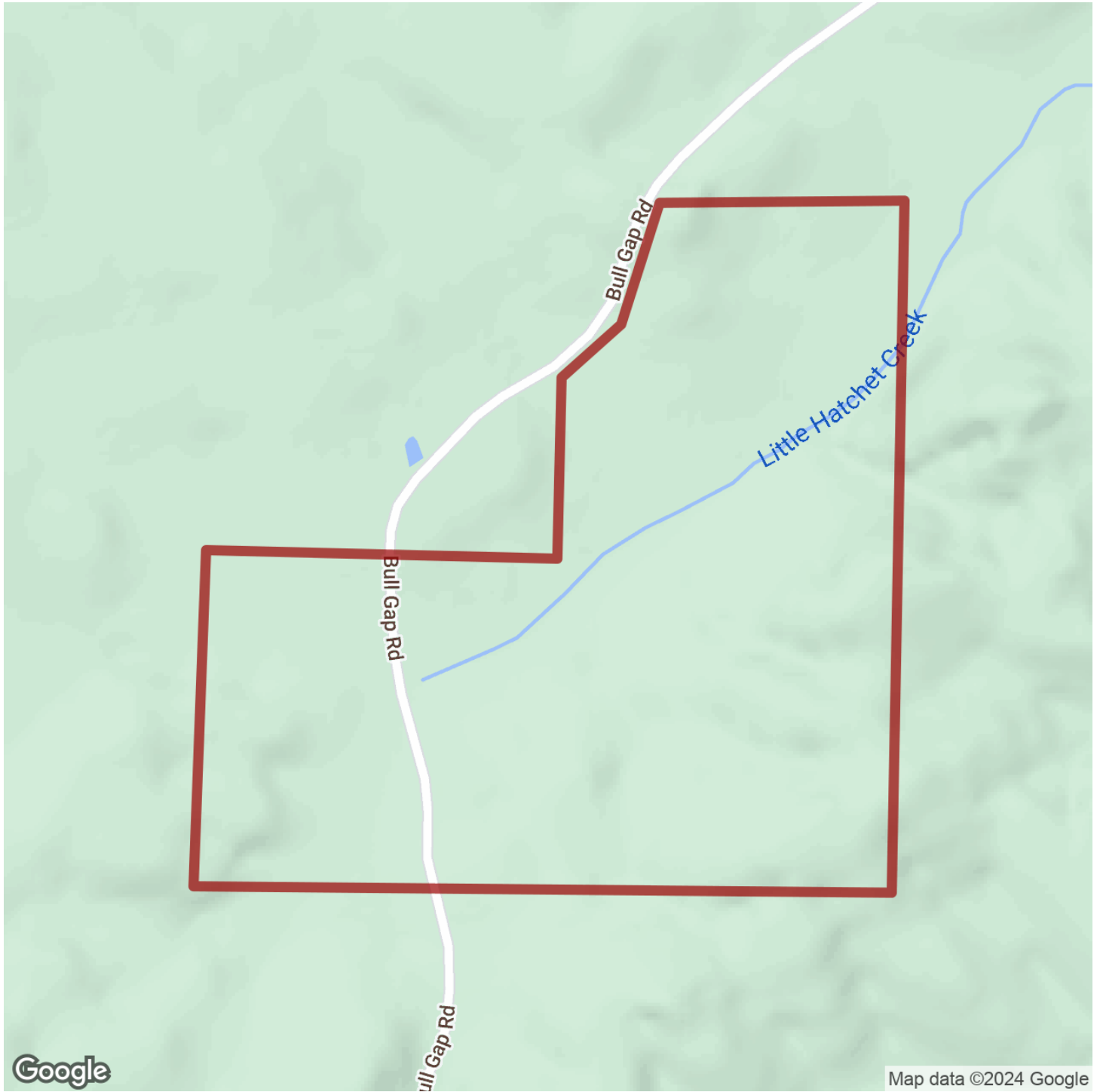




BRIAN WATTS

brian@selandgroup.com | 1-866-751-LAND | (334) 707-4273

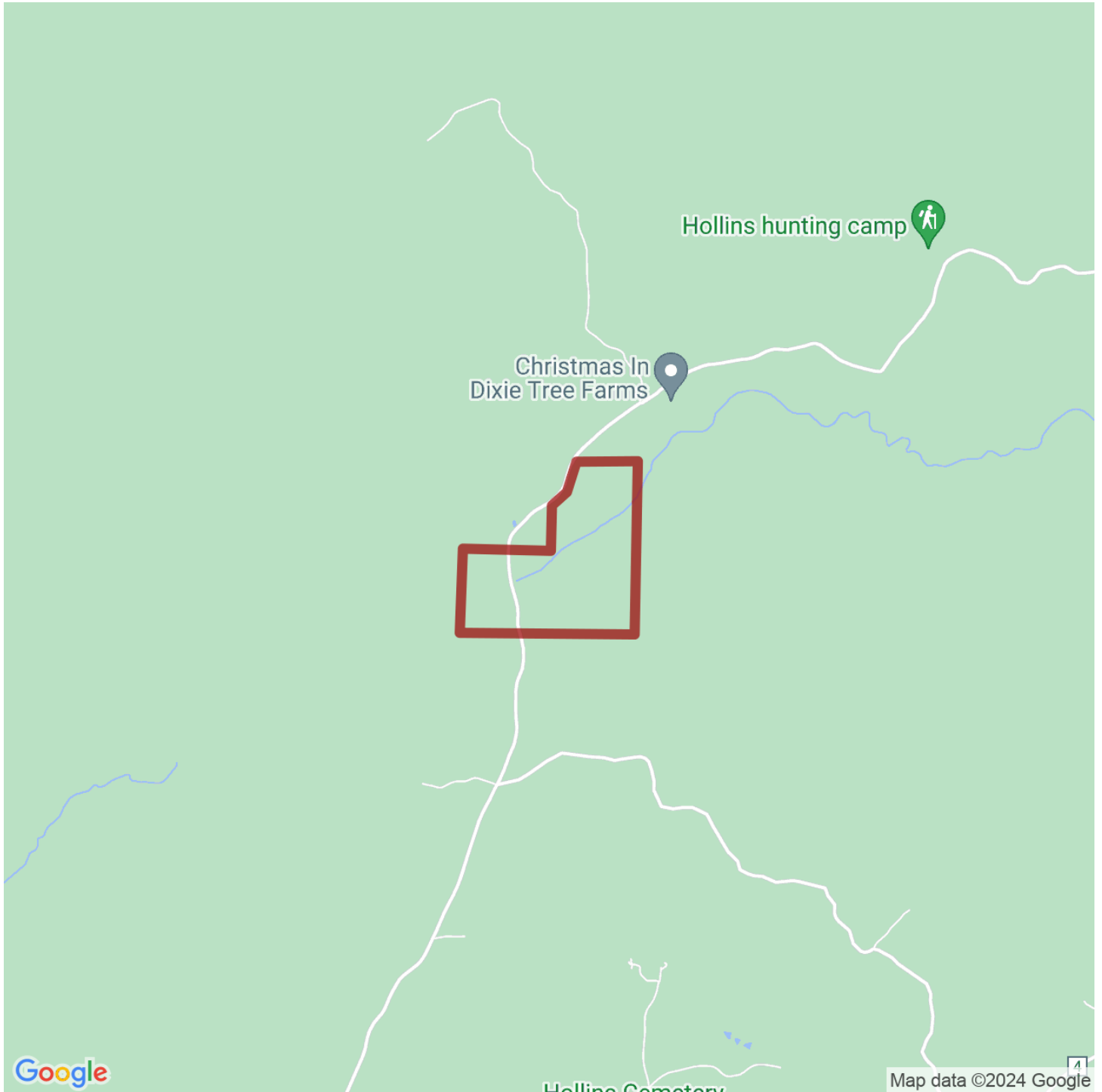




BRIAN WATTS

brian@selandgroup.com | 1-866-751-LAND | (334) 707-4273





BRIAN WATTS

brian@selandgroup.com | 1-866-751-LAND | (334) 707-4273

