

# 59+/- acres in Geneva County, Alabama

This is a diverse property with 30+/- acres of farm land and the rest is wooded with plenty of road frontage on Wedsel and Fink Roads, about 10 miles from Samson. It could easily be converted into to pasture and there are plenty of deer and small game for the hunter. There are several home sites. \$179,000

**Acreage with Homesite · \$179,000**  
**View online at <http://selg.biz/8710>**



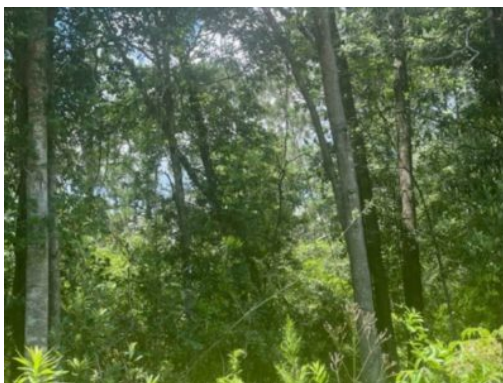
**KENNY KING**

kk45@troycable.net | 1-866-751-LAND | (334) 372-1992





Southeastern  
LAND GROUP

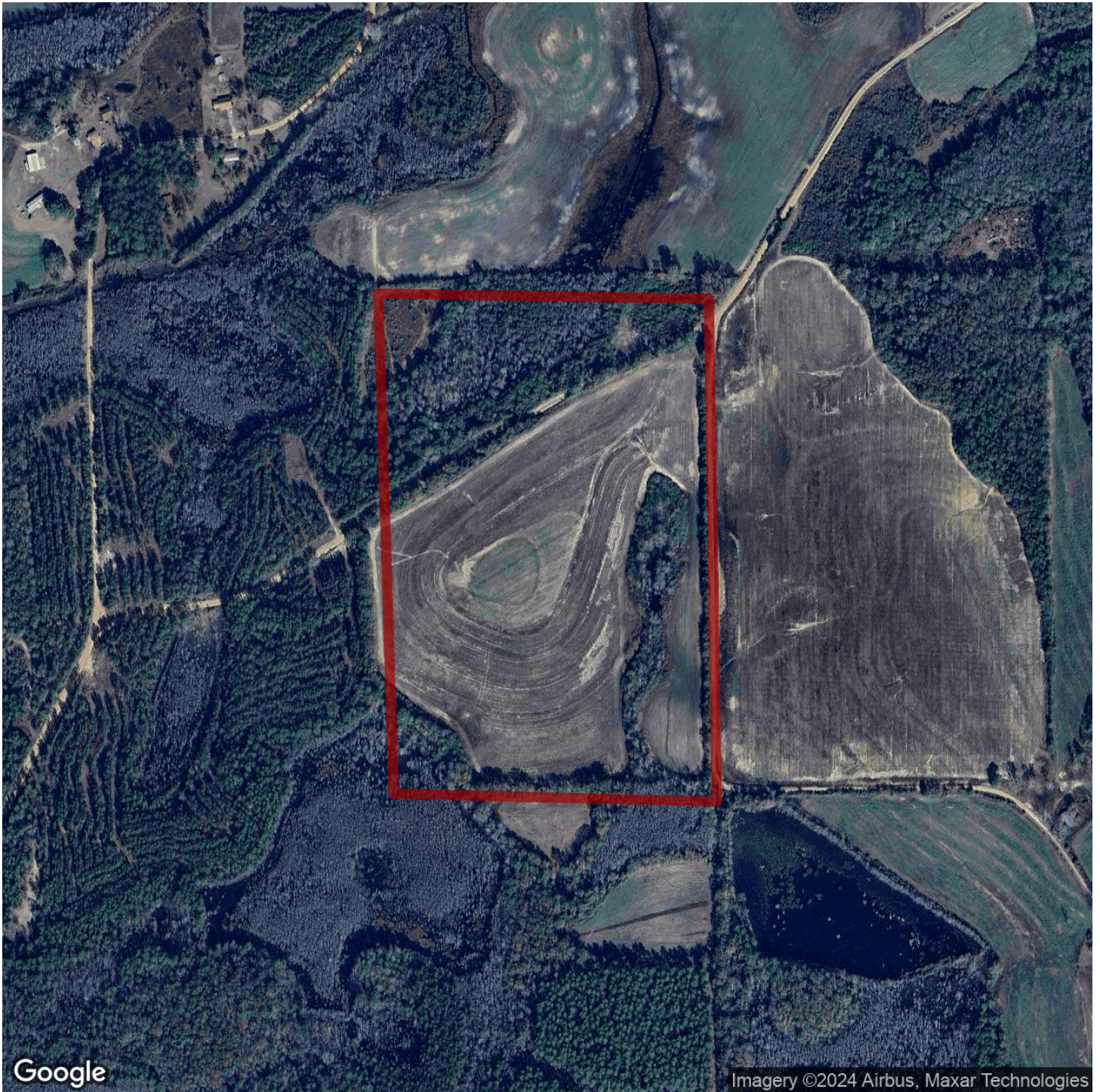


KENNY KING

kk45@troycable.net | 1-866-751-LAND | (334) 372-1992







Google

Imagery ©2024 Airbus, Maxar Technologies



**KENNY KING**

kk45@troycable.net | 1-866-751-LAND | (334) 372-1992



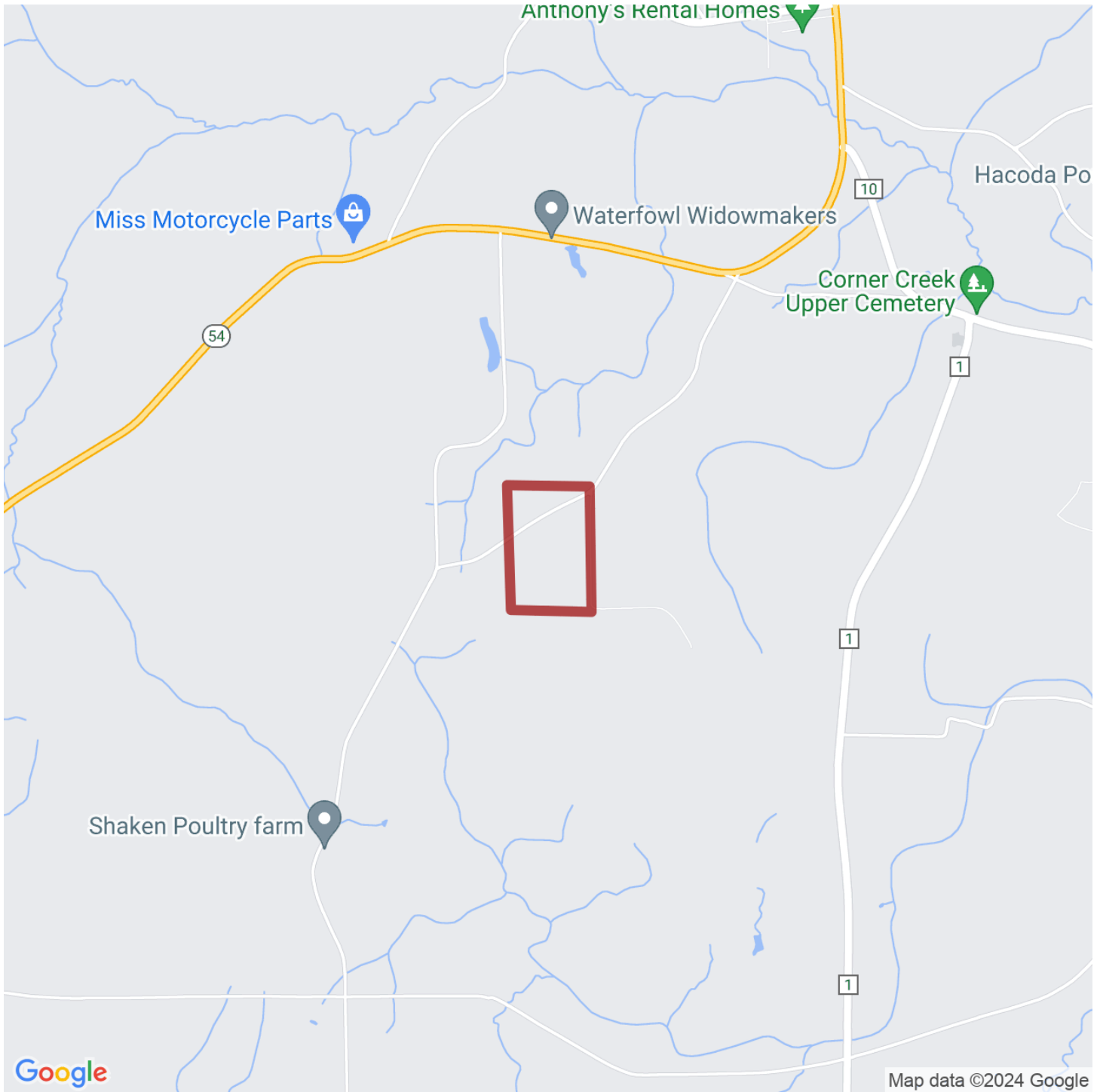




**KENNY KING**

kk45@troycable.net | 1-866-751-LAND | (334) 372-1992





**KENNY KING**

kk45@troycable.net | 1-866-751-LAND | (334) 372-1992

