

13+/- acres in Tuscaloosa County, Alabama

Northport Homesite with Acreage. 13 +/- wooded acres located just minutes from Downtown Northport. The acreage is part of a larger parcel ID#19-01-11-0-001-019.000. More acreage will be available for purchase if desired.

Location: This tract is located 9 miles north of Hwy 43 & Hwy 82 intersection. The tract adjoins Lowery Drive which is just off of Hwy 171.

Terrain: Flat too gently rolling.

Utilities: Power and water are located at the North property line on Lowery Drive.

To schedule an appointment or to view the property please call or email Shaun Lee.

Showings are by appointment only.

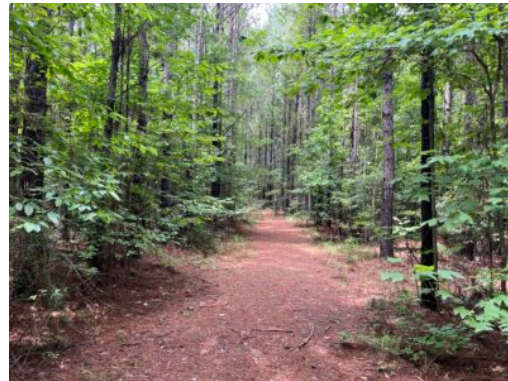
Acreage with Homesite • \$164,000
View online at <http://selg.biz/6003>



SHAUN LEE

shaun@selandgroup.com | 1-866-751-LAND | 205-361-5002

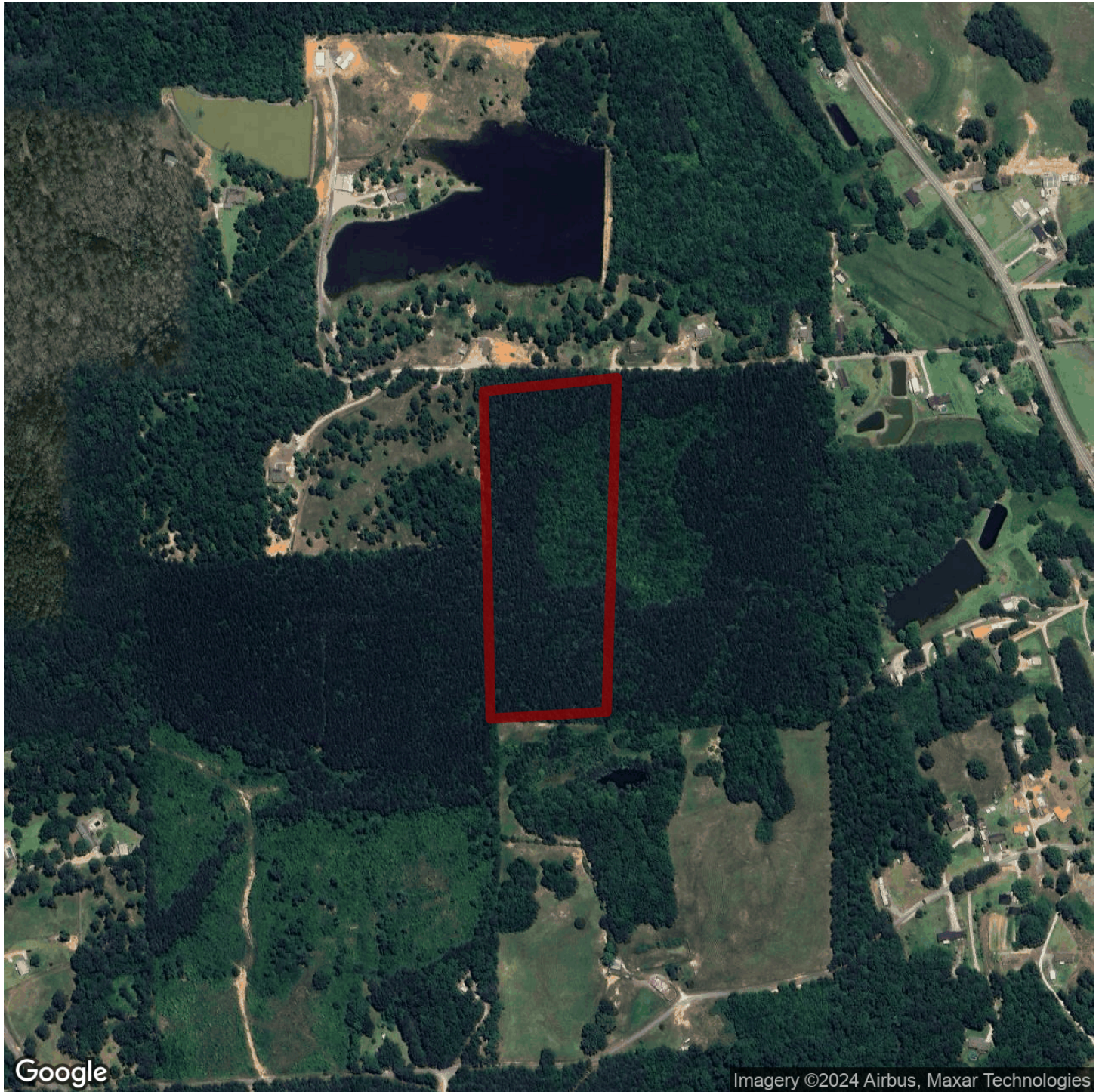




SHAUN LEE

shaun@selandgroup.com | 1-866-751-LAND | 205-361-5002





Google

Imagery ©2024 Airbus, Maxar Technologies



SHAUN LEE

shaun@selandgroup.com | 1-866-751-LAND | 205-361-5002

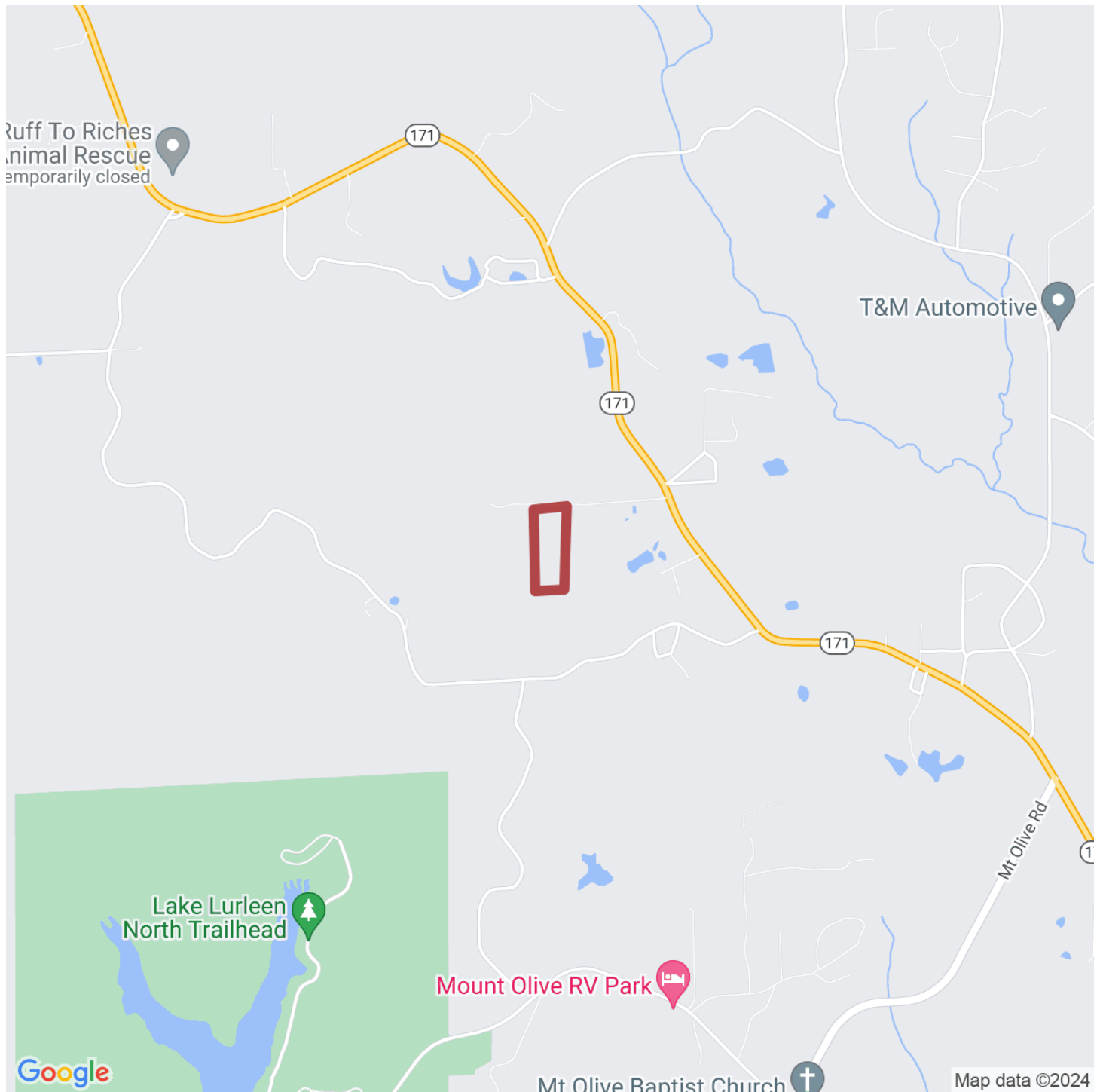




SHAUN LEE

shaun@selandgroup.com | 1-866-751-LAND | 205-361-5002





SHAUN LEE

shaun@selandgroup.com | 1-866-751-LAND | 205-361-5002

