

# 18+/- acres in Butler County, Alabama

For Sale...18+/- acres in South Butler County Alabama. Located along newly paved Booker Rd and less than 2 miles from Hwy 55 this tract is very conveniently located. The tract consist of mostly mature hardwood and pine timber that cover 80% of the property. Piney Woods Creek makes up the Eastern boundary line of the tract. This is a large sandy bottom creek that would provide water and year-round enjoyment. A power line runs through the property and would make a good wildlife food plot. A new trail system has just been established and power is available along the road frontage. The tract is surrounded by larger landowners and would make a great smaller hunting property and or cabin site.

**Hunting • \$70,200**

**View online at <http://selg.biz/7428>**



**CALVIN PERRYMAN**

calvin@selandgroup.com | 1-866-751-LAND | (334) 419-7277





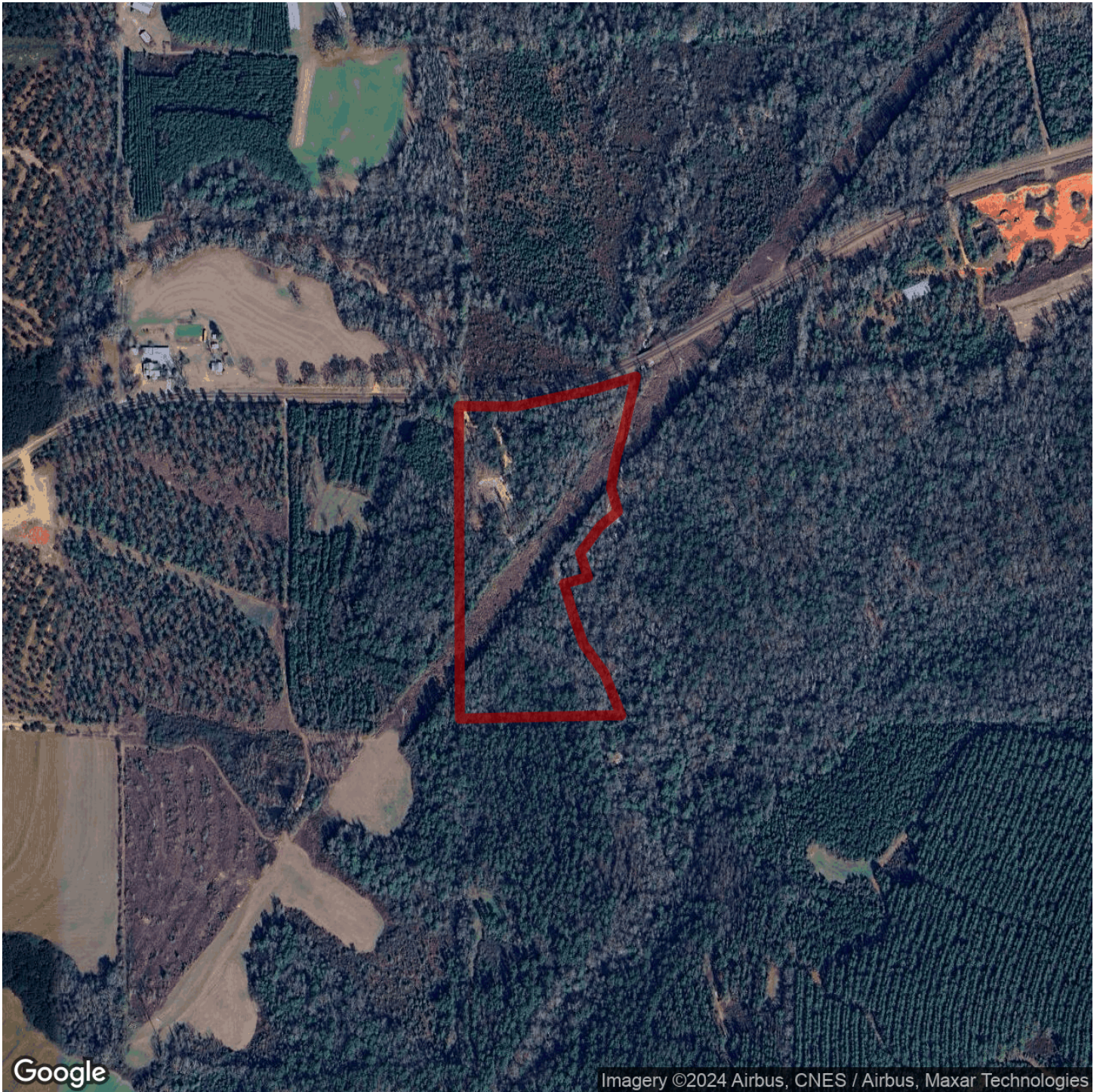


**CALVIN PERRYMAN**

calvin@selandgroup.com | 1-866-751-LAND | (334) 419-7277







Google

Imagery ©2024 Airbus, CNES / Airbus, Maxar Technologies



**CALVIN PERRYMAN**

calvin@selandgroup.com | 1-866-751-LAND | (334) 419-7277







**CALVIN PERRYMAN**

calvin@selandgroup.com | 1-866-751-LAND | (334) 419-7277







**CALVIN PERRYMAN**

calvin@selandgroup.com | 1-866-751-LAND | (334) 419-7277

