

6.7+/- acres in Douglas County, Georgia

UNDER CONTRACT!

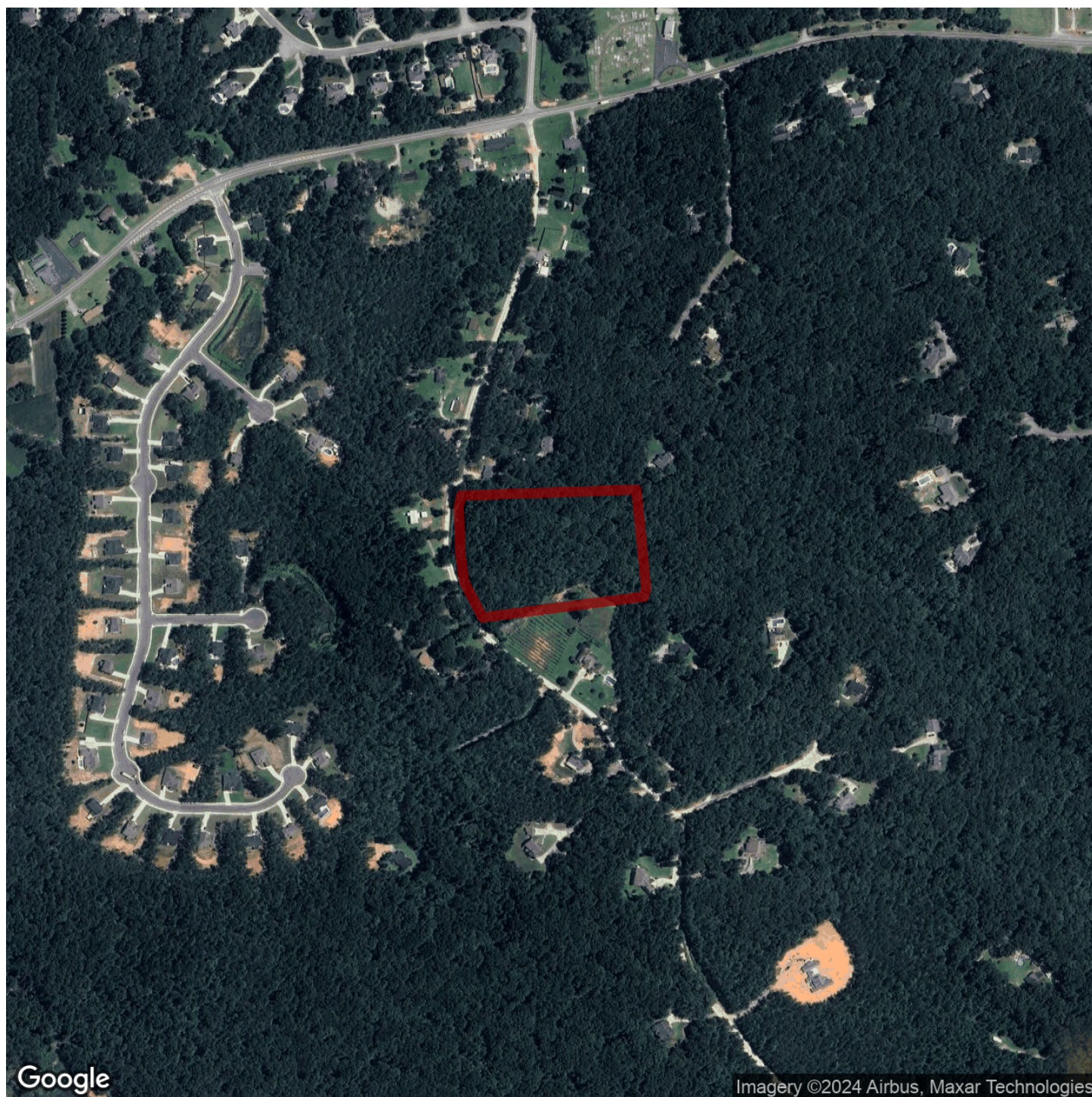
Here is your chance to own an undisturbed piece of land in Douglas County, Georgia. This 6.7 +/- acre tract, Zoned R-A, has everything you need to create a little piece of heaven to call your very own (building sites, a small stream, mature timber, gentle rolling hills, and even an opportunity to create a pond). This beautiful property also has 400+/- feet of road frontage on Tyree Road, which is a well-maintained gravel County road and County Water is available.

Mobile homes are NOT allowed on this property (which is under 10 acres), per Douglas County, but Modular Homes are allowed (non vehicle-type) with an 1,800 sq.ft. minimum. Setbacks for the primary building are 35 feet in front, 15 feet to the side, and 60 feet in the rear. Buyers should independently verify these with Douglas County Planning and Zoning (770-920-7241 ext. 5).

Don't delay! Make this property your own, build that dream home and live among the hardwoods in the country away from the hustle and bustle of in-town living!

Ag/Pasture Land • \$115,000
View online at <http://selg.biz/1538>





Google

Imagery ©2024 Airbus, Maxar Technologies

selandgroup.com

1-866-751-LAND





