

# 309+/- acres in Morgan County, Alabama

Situated at the very north end of Lamon's Cove is this serene and private 309 Acres.

Imagine hills and valleys, huge trees, enormous rock outcroppings, and waterfalls. Spend your days hiking, biking, horseback riding or driving your Jeep to either one of your very own two waterfalls. Make this your permanent home or just your weekend getaway. Only 30 minutes from Huntsville, Alabama's largest city. You can have it all - peaceful tranquility only minutes from great cuisine, sporting events, concerts, and an international airport.

Some property highlights:

2 flowing waterfalls

Multiple caves and rock formations

Over 2 miles of freshly worked roads for access.

Multiple homesites overlooking Lamon's cove.

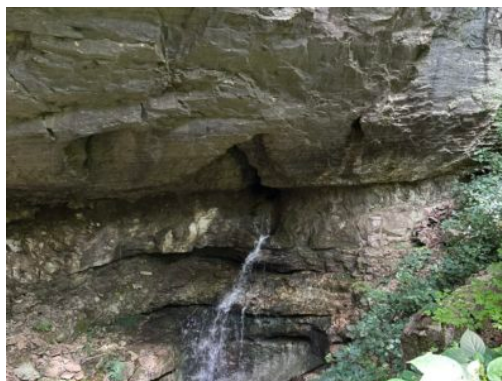
Property insulated on all sides from any further development truly making these 309 acres a private oasis.

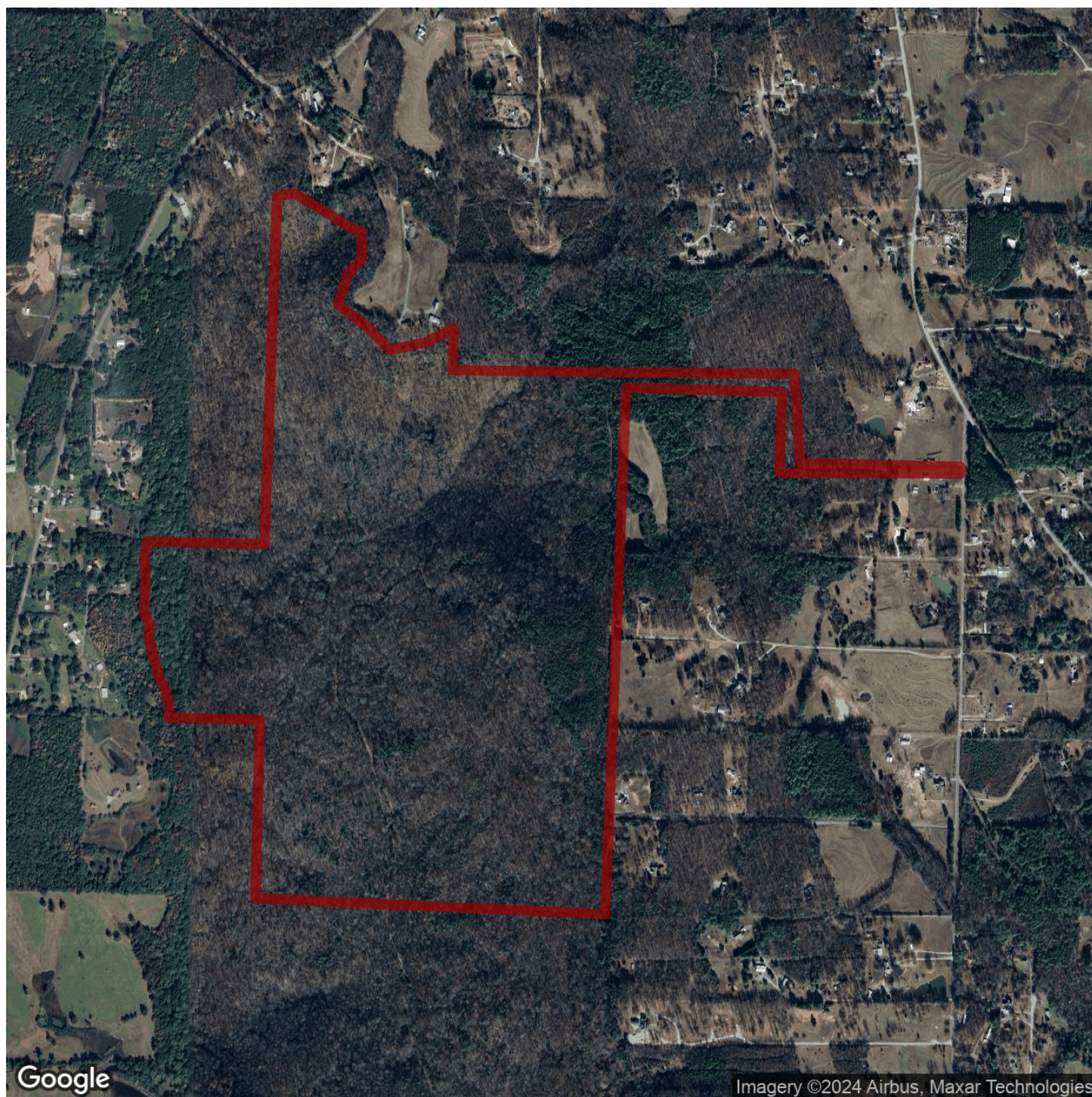
Less than 30 minutes from downtown Huntsville and 20 minutes from Martin Rd/South Huntsville

Showings by appointment only and must be accompanied by a licensed agent. Call Peyton Littrell today for more information or to set up an appointment!

**Acreage with Homesite • \$850,000**

**View online at <http://selg.biz/7798>**





Google

Imagery ©2024 Airbus, Maxar Technologies

[selandgroup.com](http://selandgroup.com)

1-866-751-LAND



