

# 17.83+/- acres in Shelby County, Alabama

New minifarm available just outside of Columbiana city limits. The property is unrestricted with best use being a residential minifarm. The property is located on county Road 305 with power and water available at the road. The property is gently rolling with several potential homesites.

Call John Morris for questions or to set up a showing. (205) 901-9397

**Acreage with Homesite • \$139,000**  
**View online at <http://selg.biz/7967>**



**JOHN MORRIS**

johnmorris@selandgroup.com | 1-866-751-LAND | (205) 901-9397





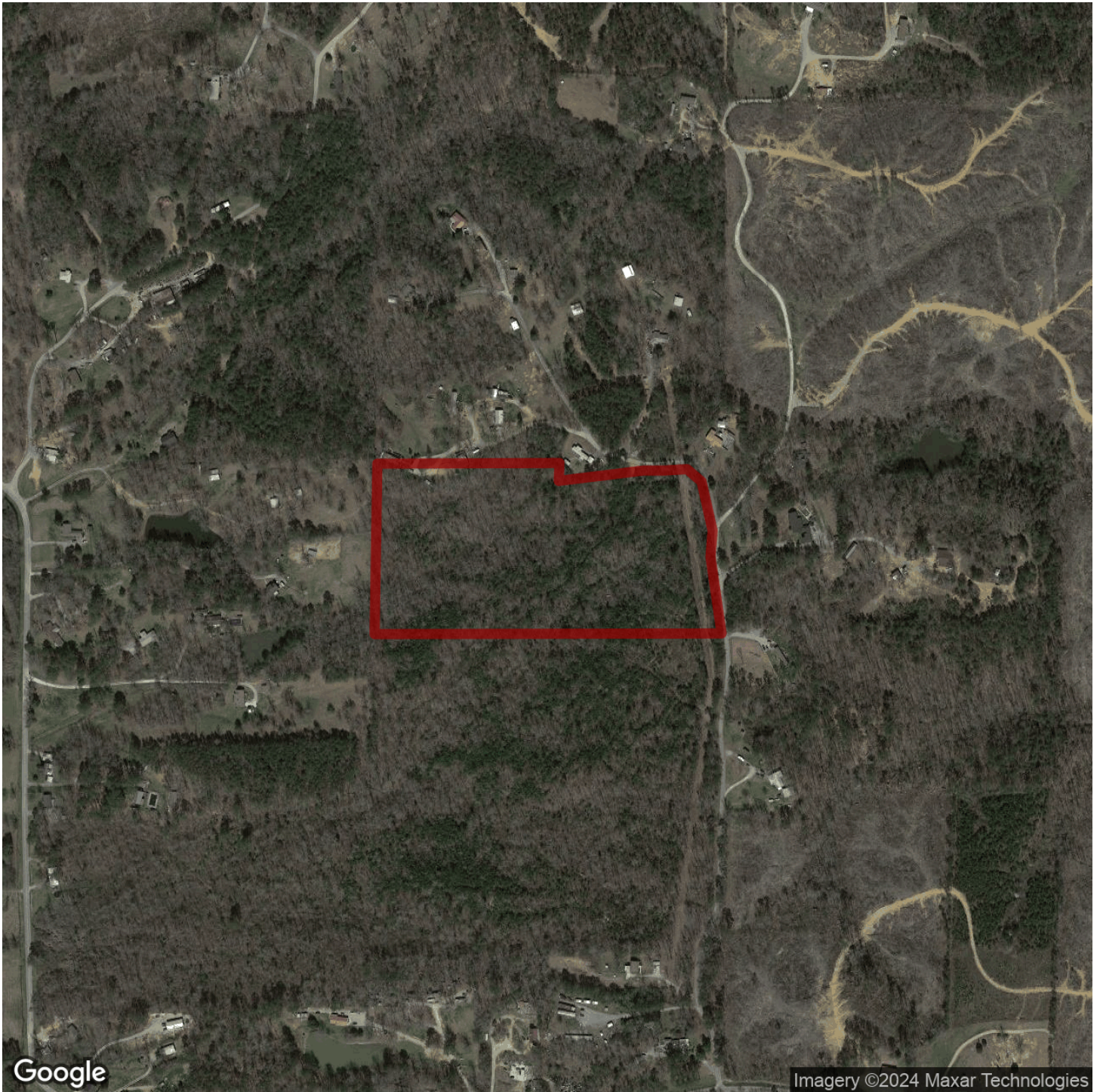


**JOHN MORRIS**

johnmorris@selandgroup.com | 1-866-751-LAND | (205) 901-9397







**JOHN MORRIS**

johnmorris@selandgroup.com | 1-866-751-LAND | (205) 901-9397



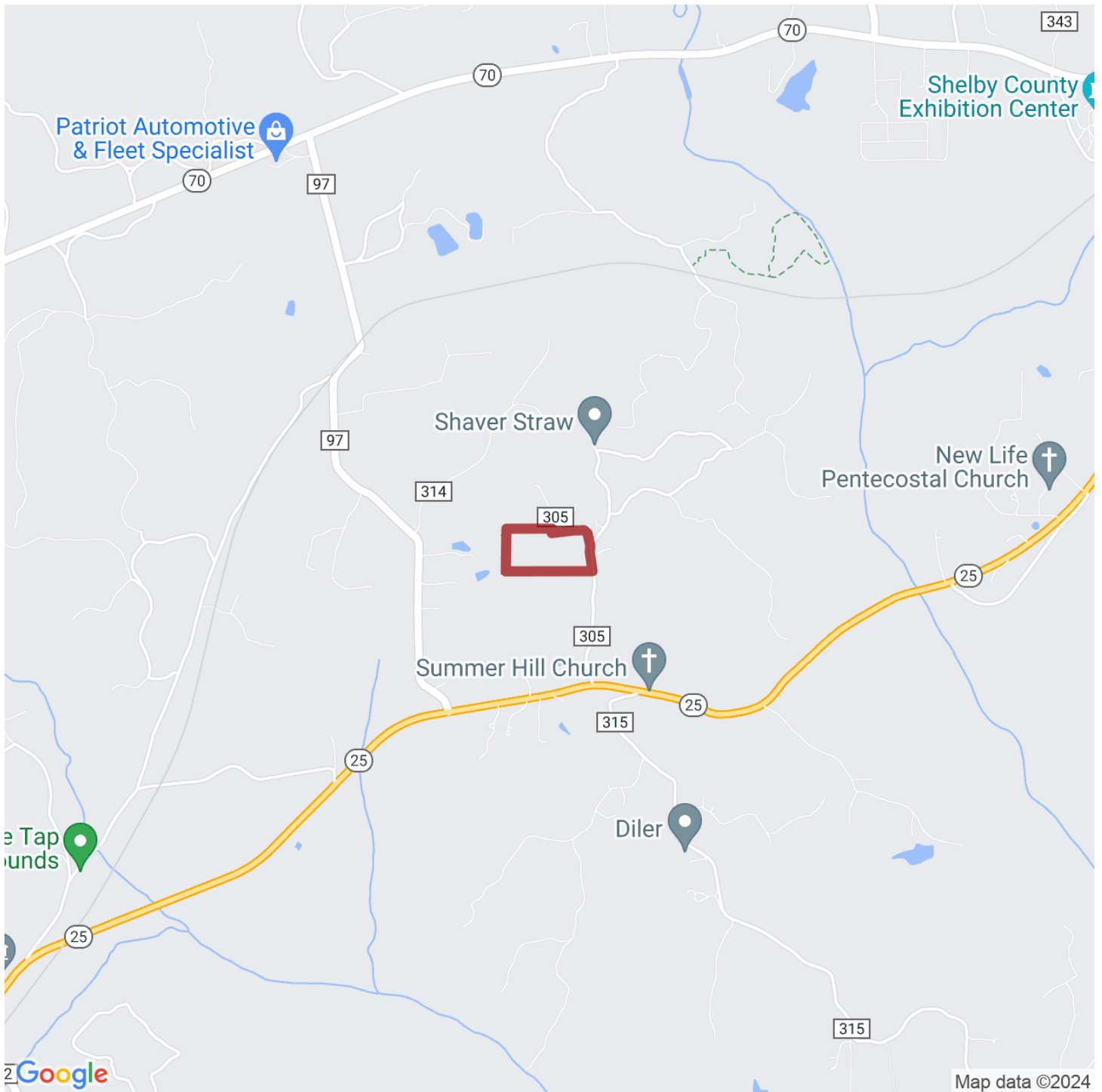




**JOHN MORRIS**

johnmorris@selandgroup.com | 1-866-751-LAND | (205) 901-9397





**JOHN MORRIS**

johnmorris@selandgroup.com | 1-866-751-LAND | (205) 901-9397

