

5+/- acres in Tallapoosa County, Alabama

Custom Build your Dream Home on this great mini farm property in the highly desirable area of Camp Hill, close to Waverly. Located between Auburn and beautiful Lake Martin, at the corner of County Road 89 and Ross Road, this tract has large beautiful hardwood and pine trees making great shade trees for your yard! This tract is situated between Highway 280 and Farmville Road for convenient access.

Power, water, and fiberoptic internet is available. Tracts like these, in this area do not come up for sale very often. This tract is being sold with covenants of no mobile, modular, or manufactured homes.

Give Brian a call today to schedule your showing of this beautiful property.

One of sellers is a licensed Realtor in Alabama.

Mini farm · \$0

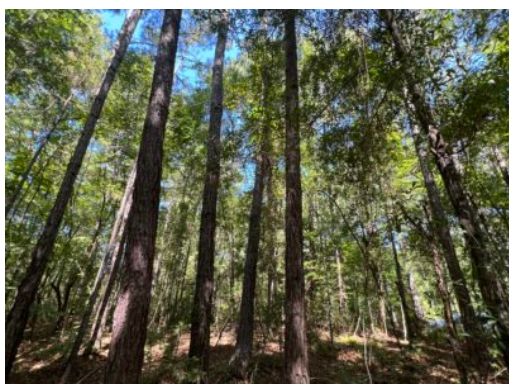
View online at <http://selg.biz/7788>



BRIAN WATTS

brian@selandgroup.com | 1-866-751-LAND | (334) 707-4273





BRIAN WATTS

brian@selandgroup.com | 1-866-751-LAND | (334) 707-4273





Google

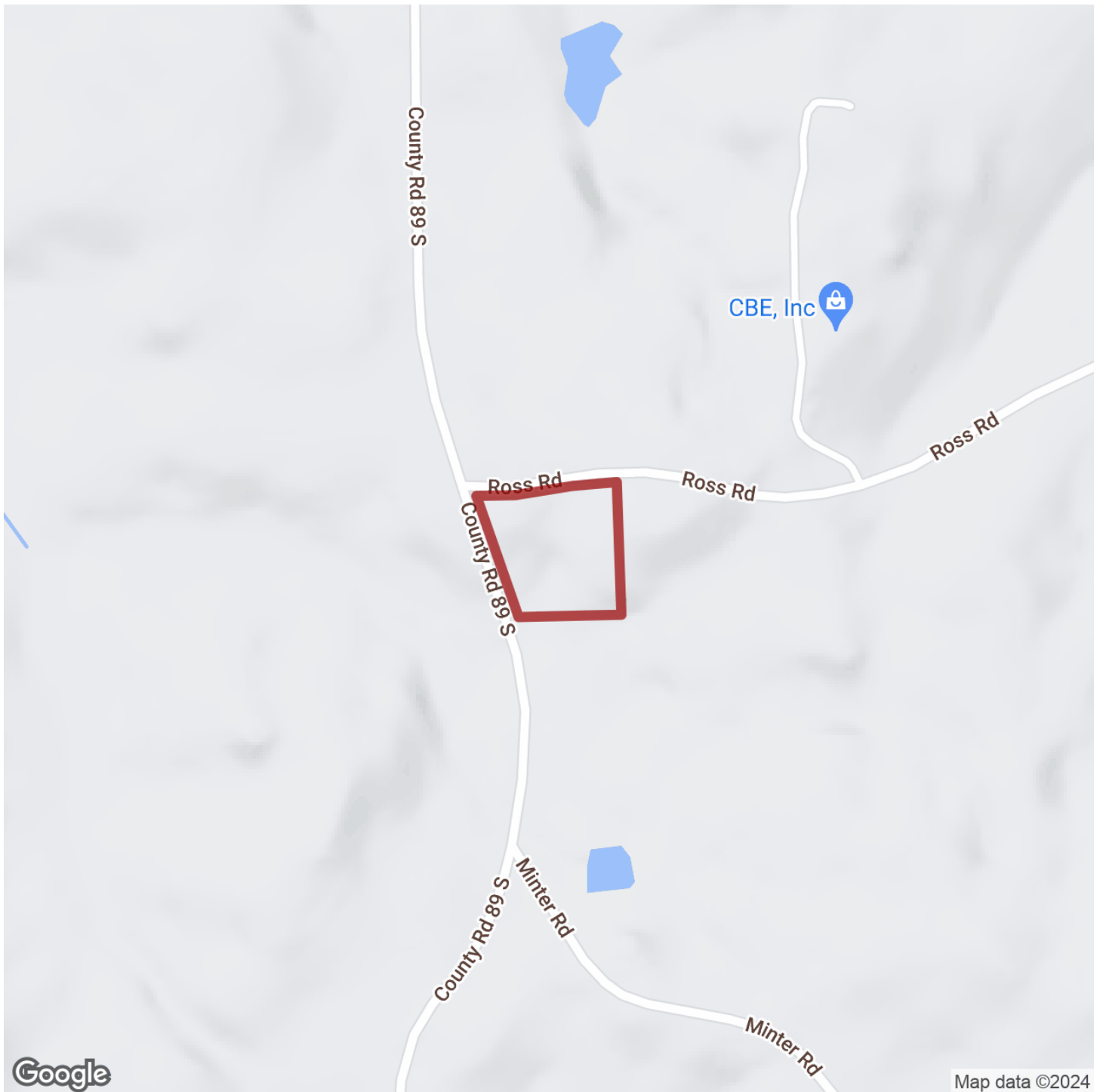
Imagery ©2024 Airbus, Maxar Technologies



BRIAN WATTS

brian@selandgroup.com | 1-866-751-LAND | (334) 707-4273





BRIAN WATTS

brian@selandgroup.com | 1-866-751-LAND | (334) 707-4273





BRIAN WATTS

brian@selandgroup.com | 1-866-751-LAND | (334) 707-4273

