

10+/- acres in Tallapoosa County, Alabama

Welcome to Tract 4 of Piedmont Farms! This tract is a beautiful property and a must see!! There is a nice mixture of hardwood and pine trees of various sizes. This tract has great topography and would make a great property to custom build your dream home on! Located on Heard Road, between Highway 280 and Jackson Road, in Camp Hill, very close to Waverly, this type of tract is what everyone is looking for. Power and water are close by.

Give Brian Watts or Jessica Anderson a call to schedule your showing of this fine property.

Mini farm • \$0

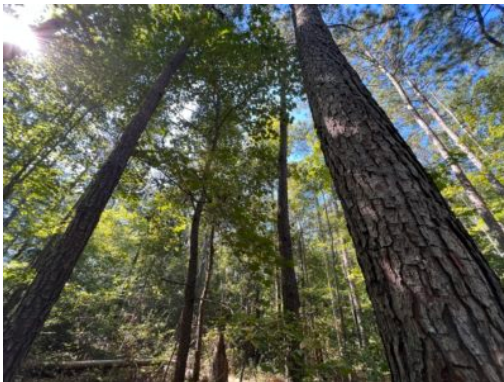
View online at <http://selg.biz/2924>



BRIAN WATTS

brian@selandgroup.com | 1-866-751-LAND | (334) 707-4273

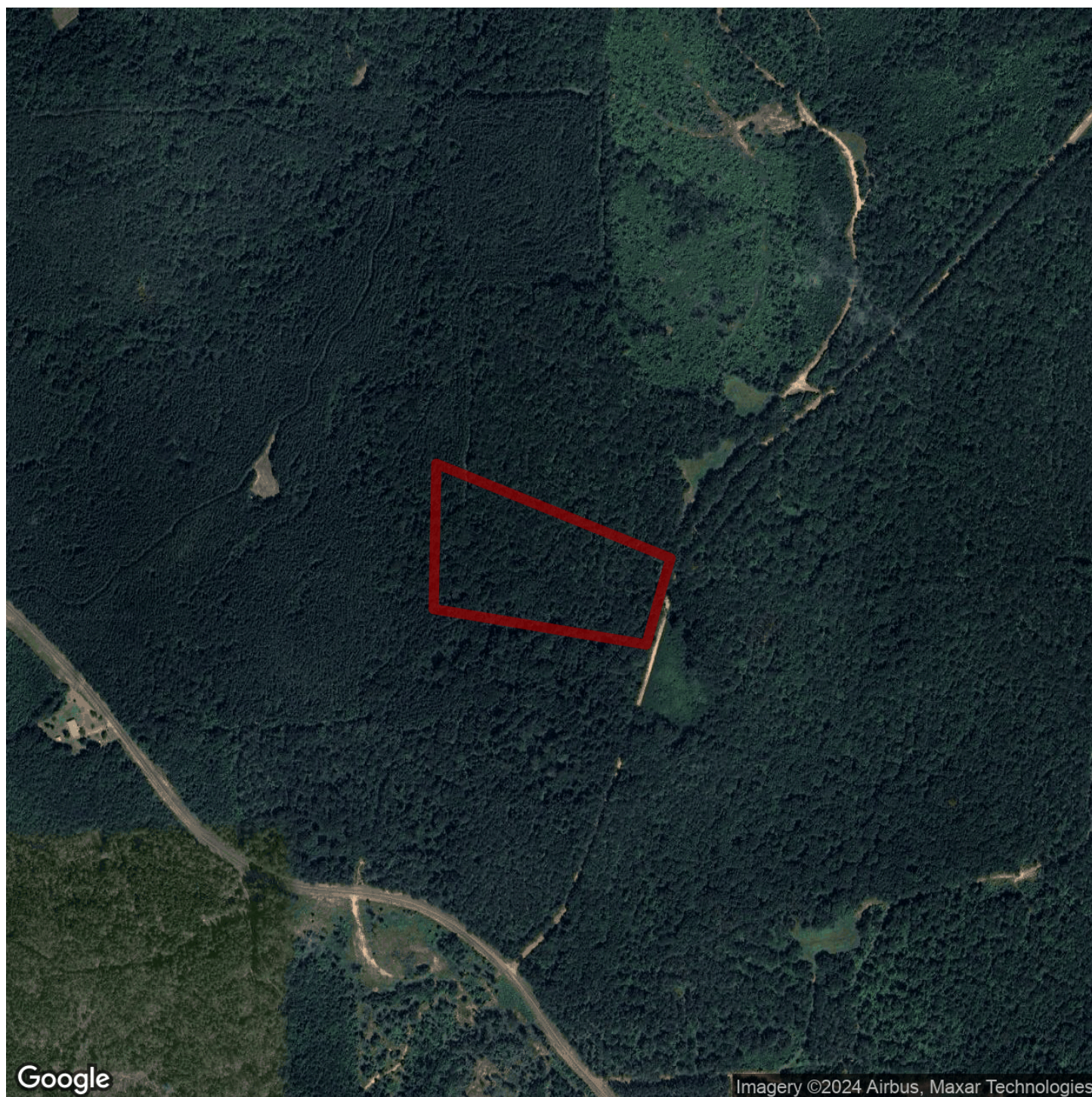




BRIAN WATTS

brian@selandgroup.com | 1-866-751-LAND | (334) 707-4273





Google

Imagery ©2024 Airbus, Maxar Technologies



BRIAN WATTS

brian@selandgroup.com | 1-866-751-LAND | (334) 707-4273





BRIAN WATTS

brian@selandgroup.com | 1-866-751-LAND | (334) 707-4273





BRIAN WATTS

brian@selandgroup.com | 1-866-751-LAND | (334) 707-4273

