

450+/- acres in Wilcox County, Alabama

±450 Acres of Hunting, Recreational and Timberland For Sale in Wilcox County, Alabama. This property is set up with a great internal road system and several food plots. It is well located in a desirable recreational area with ±3 miles of Pine Barren Creek frontage. The hunting in this area is known to be great, and has the capability and history of producing 140"-150" deer. There are several sloughs which provide duck hunting each winter. The timber on this tract is a mixture of pine plantation and both young and old growth hardwood timber. The hardwood areas have both red and white oaks which provide great hunting opportunities. The pine plantation and younger hardwood areas provide great bedding cover for all wild game. Electricity is available along its road frontage on the Steel Bridge Road

Legal Description: this tract is located in Sections 14, 15, 23 and 24 of T12N R9E and consists of tax parcels: 66 16 05 15 0 000 004.000, 66 16 06 14 0 000 004.001, 66 16 06 23 0 000 002.001, 66 16 06 23 0 000 002.002, 66 16 06 24 0 000 002.001 and 66 16 06 24 0 000 003.001.

Location: The Pine Barren Creek Tract is located in Central Wilcox County just ±8 miles east of Camden on the Steel Bridge Road. Additionally it is located ±67 miles from Montgomery, ±124 miles from Birmingham, ±138 miles from Pensacola and ±142 miles from Mobile.

Showings are strictly by appointment only. Please contact Calvin Perryman to see this tract.

Hunting • \$925,000

View online at <http://selg.biz/8058>



CALVIN PERRYMAN

calvin@selandgroup.com | 1-866-751-LAND | (334) 419-7277

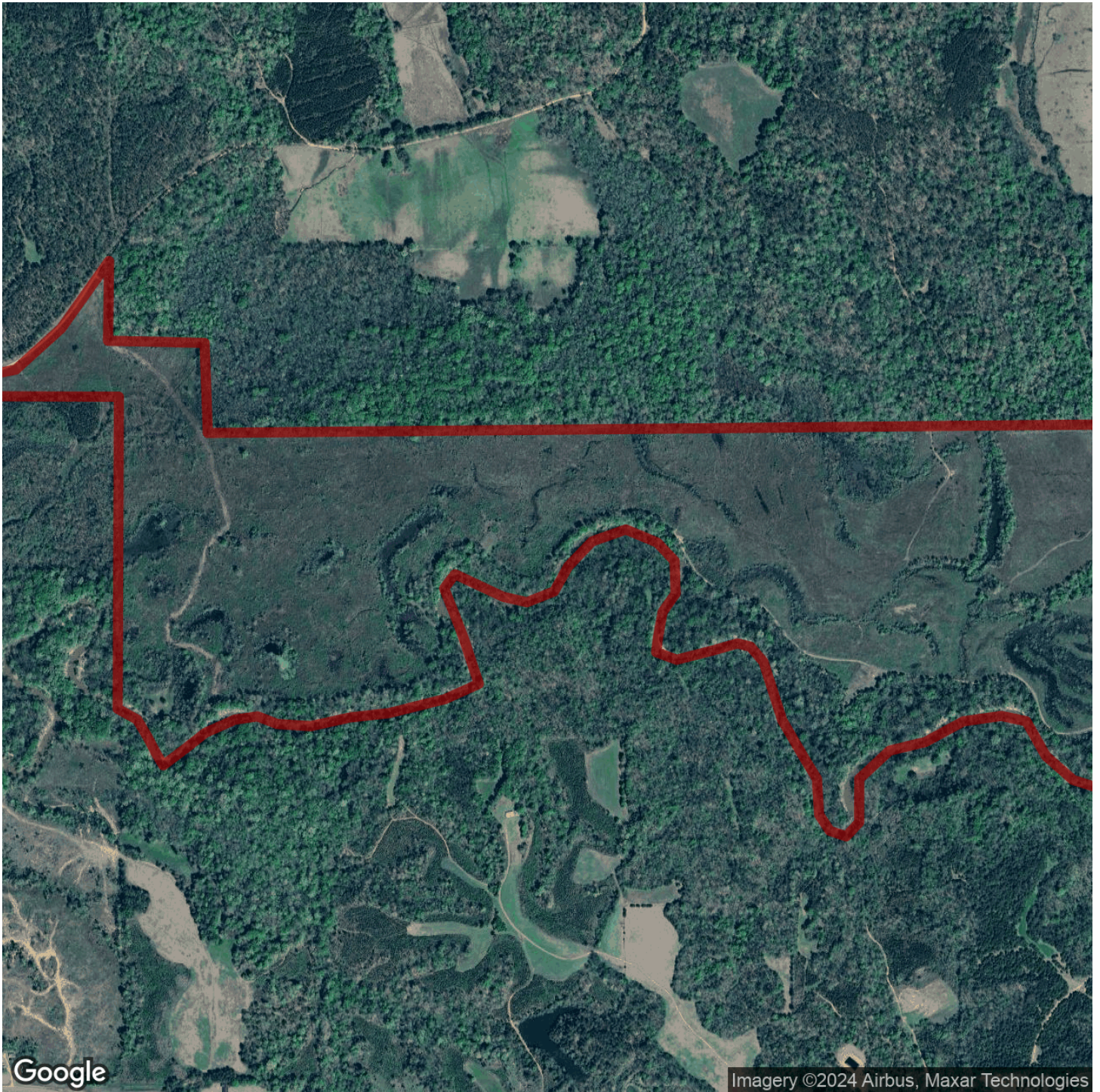




CALVIN PERRYMAN

calvin@selandgroup.com | 1-866-751-LAND | (334) 419-7277

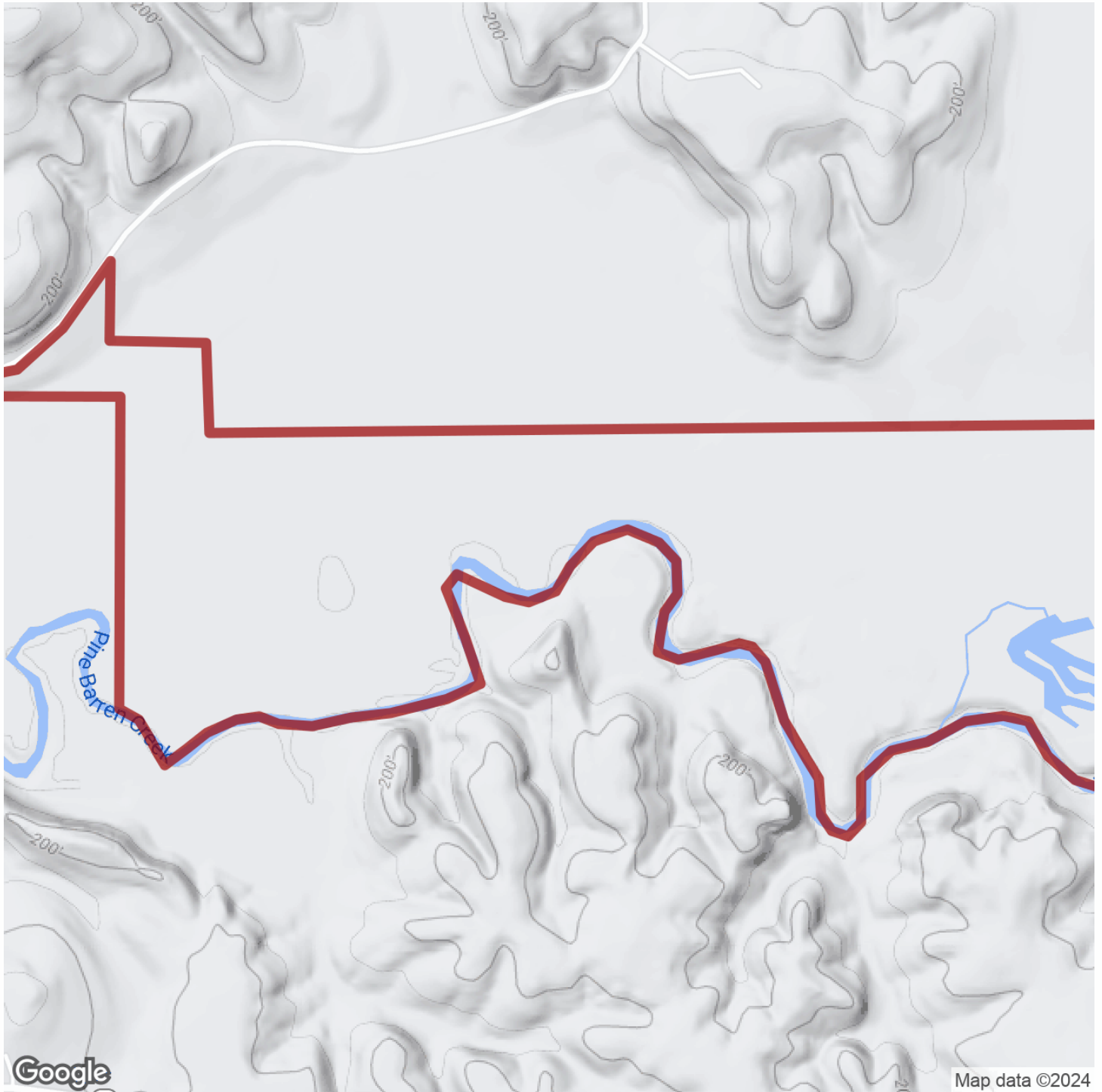




CALVIN PERRYMAN

calvin@selandgroup.com | 1-866-751-LAND | (334) 419-7277

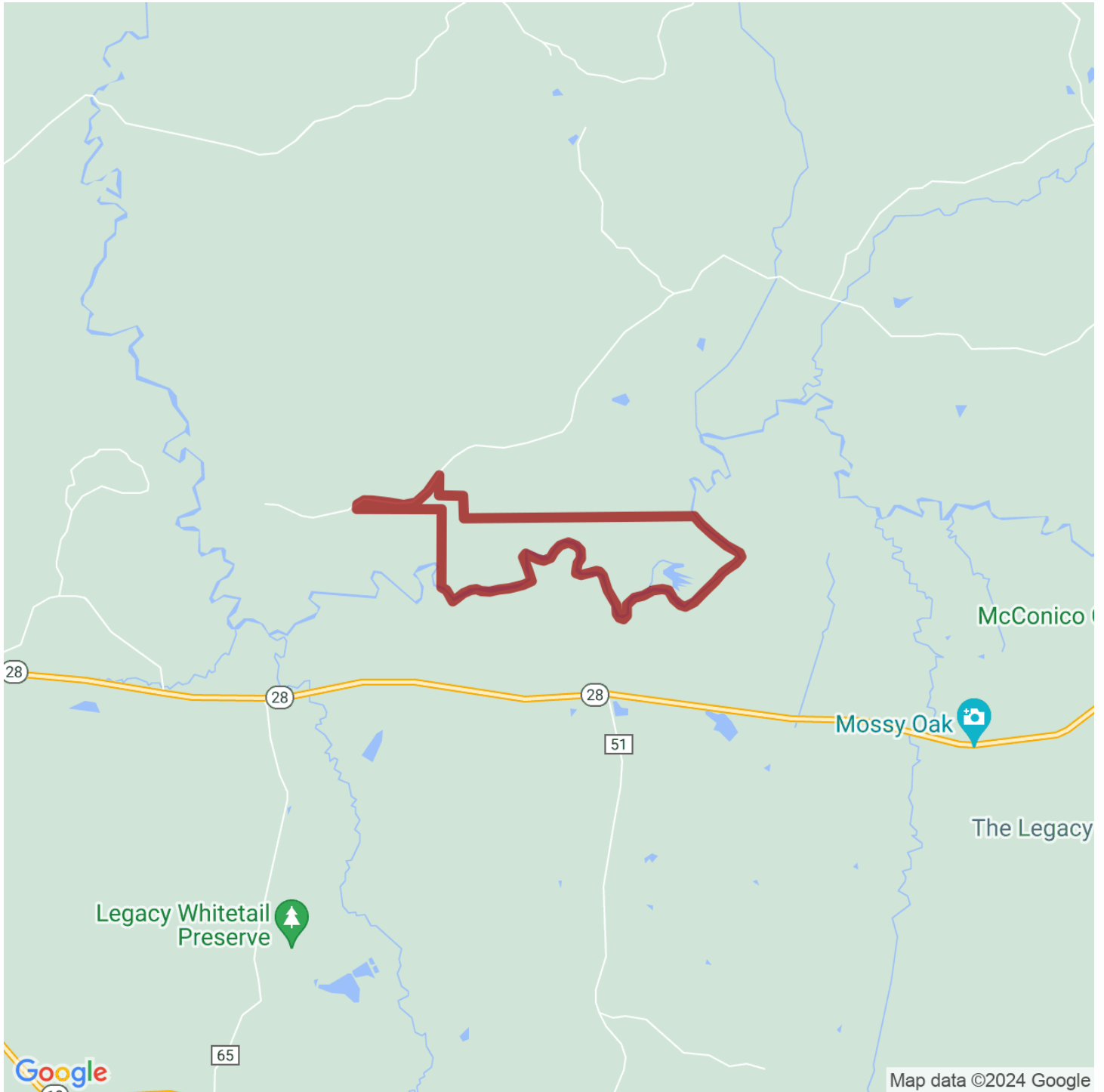




CALVIN PERRYMAN

calvin@selandgroup.com | 1-866-751-LAND | (334) 419-7277





CALVIN PERRYMAN

calvin@selandgroup.com | 1-866-751-LAND | (334) 419-7277

