

# 3+/- acres in Lee County, Alabama

Located within the Auburn City limits, 5 rare and beautiful estate lots comprise Swingle Creek Estates. Each lot is positioned on the banks of the rippling Swingle Creek. Majestic oaks canopy the homesites and drives. Lot 1 features stacked stone walls of a historic mill that border the creek. Crystal clear water sheds down small granite rock waterfalls as it wraps around the lot and homesite. A one of a kind property. Loachapoka Water Authority, Alabama Power and Fiber are all available. Soil testing has been completed around homesites to ensure septic capabilities. These lots are build ready and have limited covenants that allow for flexibility yet protection for your future estate. Builder's and House Plans must be approved by Architectural Board.

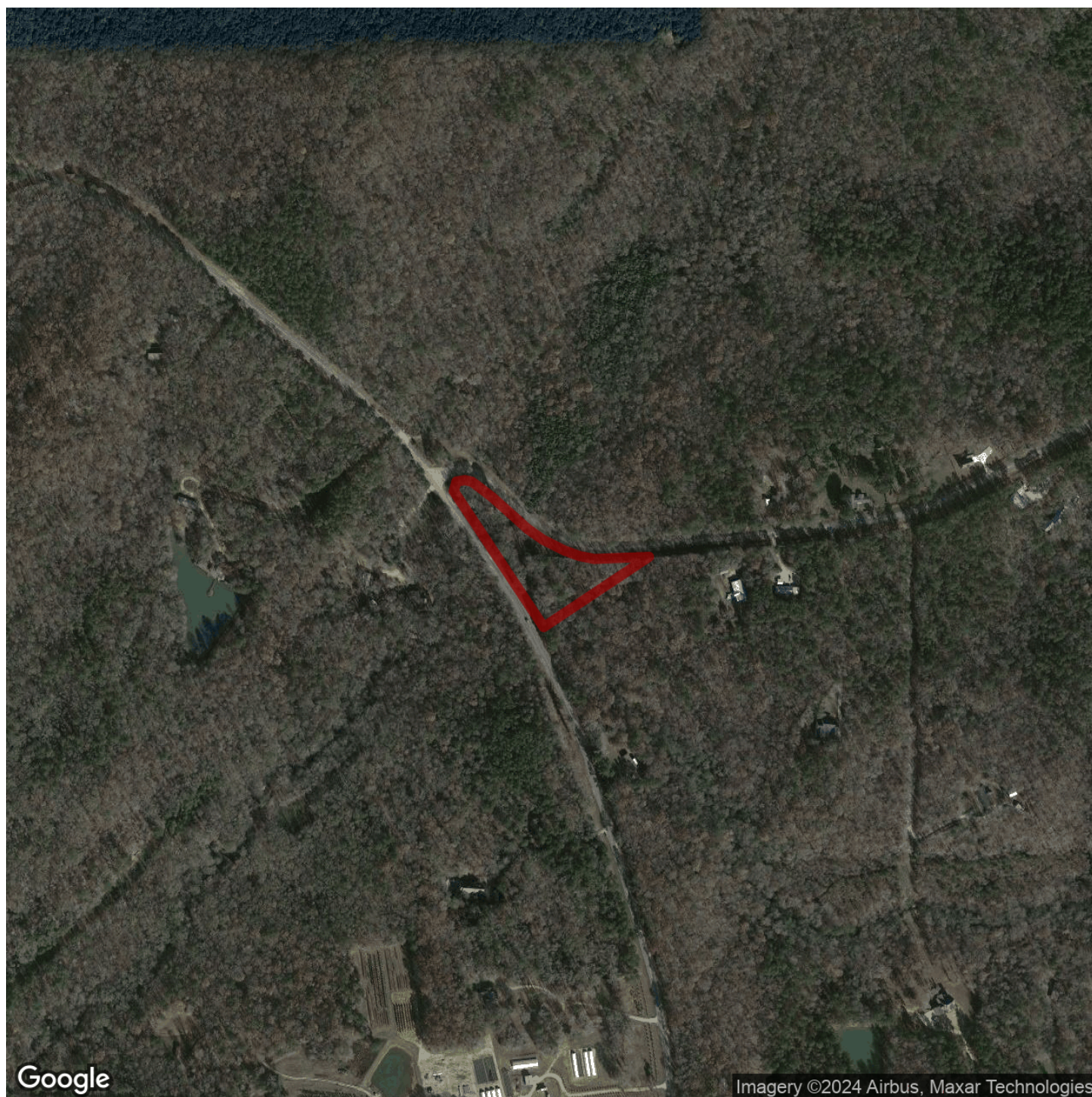
Please call Dent Stallworth or Jessica Anderson for additional information and showings.

**Southeastern Estates • \$250,000**  
**View online at <http://selg.biz/9523>**









Google

Imagery ©2024 Airbus, Maxar Technologies

[selandgroup.com](http://selandgroup.com)

1-866-751-LAND







