

# 7.45+/- acres in Lowndes County, Alabama

Welcome to 1913 Windhaven Road and one of the largest, prettiest lots in Windhaven Lakes with over 600' of paved road frontage! This lot is over 7.45+- acres and includes partial ownership of the perfect fishing lake that is approximately 3.5+- acres!! The owners have already installed the culvert and gravel for the driveway entrance! This property is ready to build your dream home. Windhaven Lakes is a restricted community conveniently located approximately 11 miles from Dannelly Field Airport, 14 miles from Hyundai Blvd, and 20 miles from Montgomery! This property is shown by appointment only! Please contact me or your agent to view.

**Mini farm · \$75,000**

**View online at <http://selg.biz/3532>**

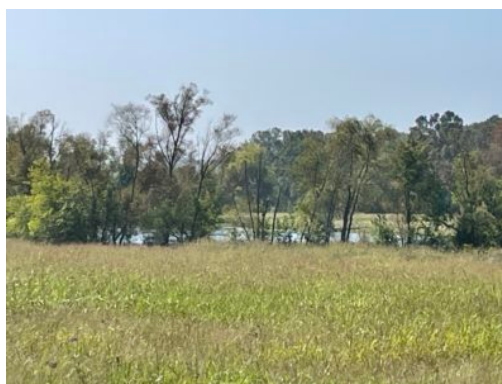


**WILLIAM LYON**

[william@selandgroup.com](mailto:william@selandgroup.com) | 1-866-751-LAND | (334) 467-1830







**WILLIAM LYON**

[william@selandgroup.com](mailto:william@selandgroup.com) | 1-866-751-LAND | (334) 467-1830







**WILLIAM LYON**

[william@selandgroup.com](mailto:william@selandgroup.com) | 1-866-751-LAND | (334) 467-1830



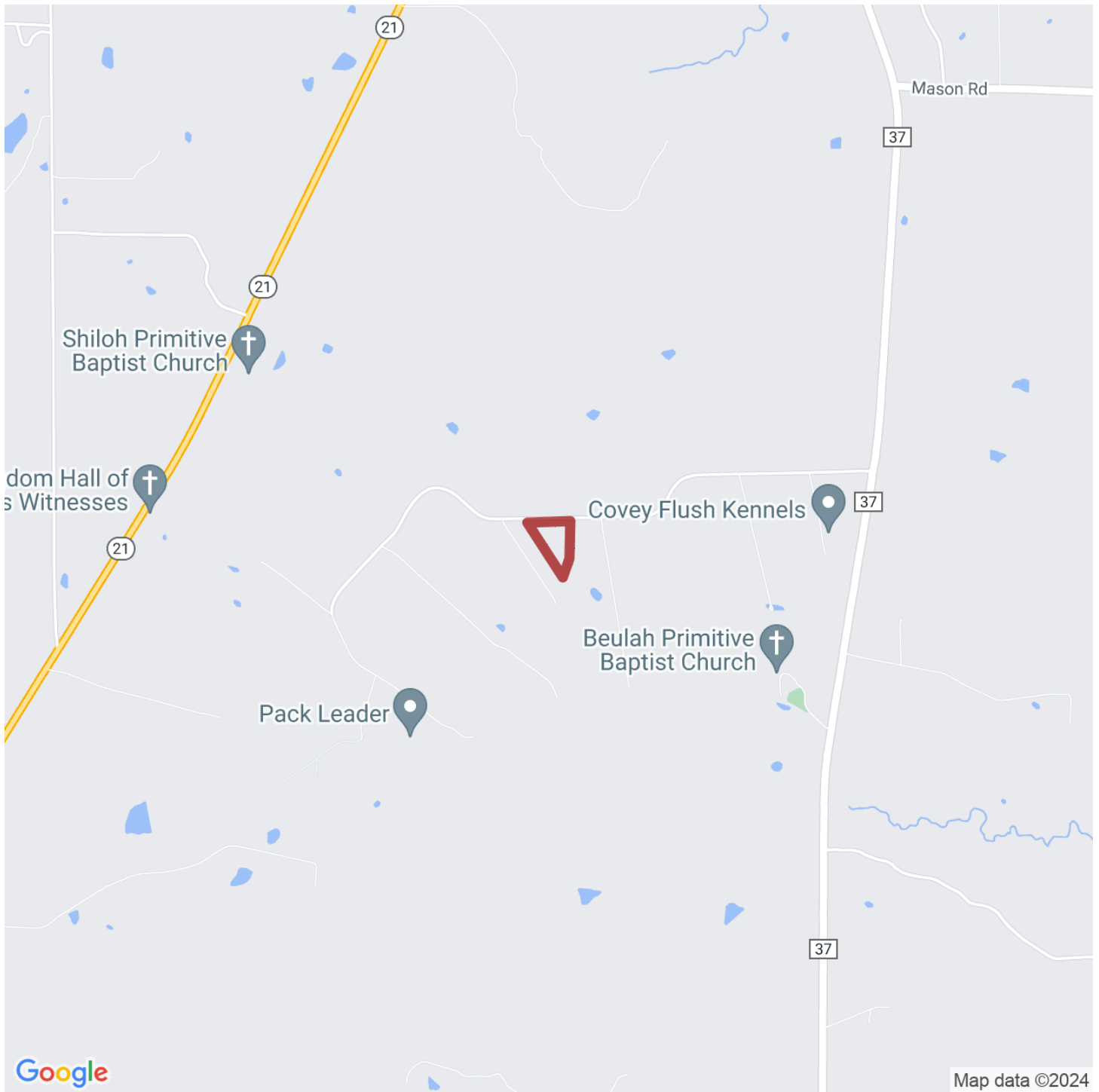




**WILLIAM LYON**

william@selandgroup.com | 1-866-751-LAND | (334) 467-1830





**WILLIAM LYON**

[william@selandgroup.com](mailto:william@selandgroup.com) | 1-866-751-LAND | (334) 467-1830

