

90+/- acres in Moore County, Tennessee

Lost Creek, situated conveniently in Southern Middle Tennessee, is a generational property along the banks of Tims Ford Lake in Moore Co. TN. It boasts +/- 90 acres, plenty of shoreline, and abundant lake views. Properties this large rarely become available on Tims Ford. There is a very charming 2 bedroom cabin, a nice barn, city water, and well established trail system throughout the property. No matter if you want a sprawling lake property, land for equestrian recreation, hunting, family retreat, development, or even investment, this legacy property can achieve each and every goal. There are many potential homesites that will allow lake access and lakeviews. If you would also want to see the local flavor there are many attractions a short distance away

Tims Ford State Park- 6 miles

Jack Daniels Distillery- 7 miles

George Dickle Distillery- 15 miles

Sewanee/ University of the South- 28 miles

Huntsville, AL - 51 miles

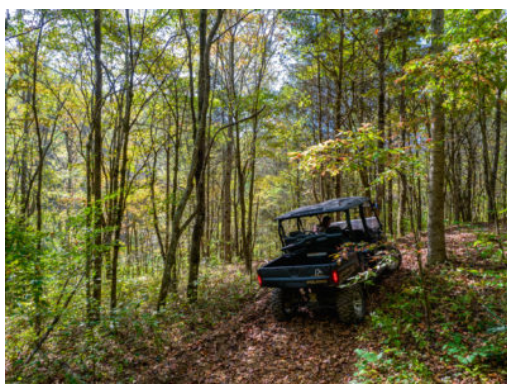
Nashville, TN - 75 miles

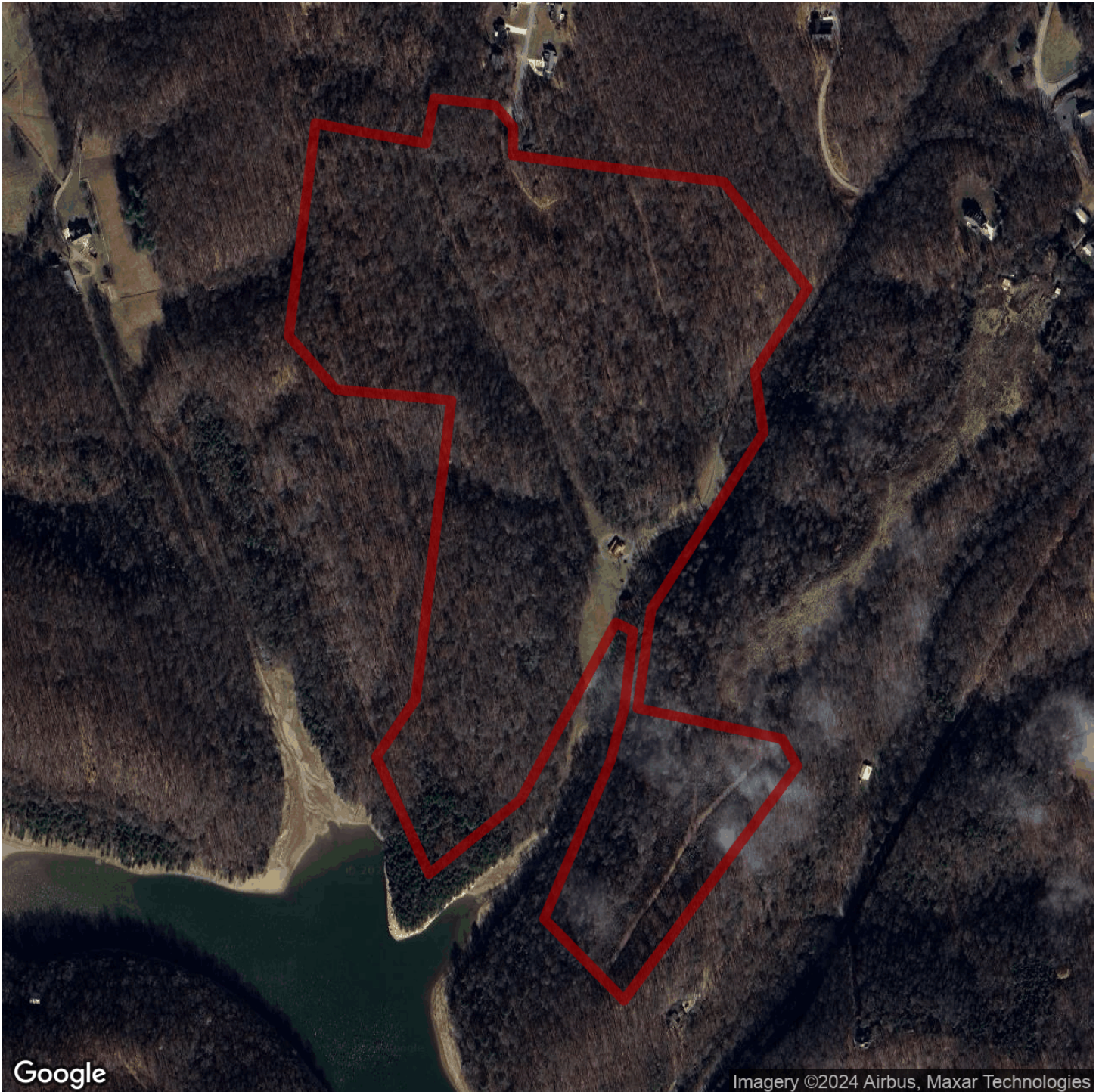
Chattanooga, TN -80 miles

If your dream is to have lake real estate with plenty of acreage and privacy for you and your family to use and enjoy for many decades to come, Lost Creek has that and so much more

\$1mil+ Estate/Rec. • \$2,199,000

View online at <http://selg.biz/6561>





Google

Imagery ©2024 Airbus, Maxar Technologies

selandgroup.com

1-866-751-LAND





