

153+/- acres in Floyd County, Georgia

Welcome to 815 Flowery Branch Road in Kingston, Georgia, where rural serenity and ultimate privacy await. As you embark on the 3000-foot-long driveway, you'll be enchanted by the seclusion this property offers. Nestled on this picturesque landscape, you'll discover a diverse terrain featuring a mix of upland hardwoods and pines, open ridge tops that bestow breathtaking vistas, and a charming small pond providing water for local wildlife. With a well-established trail system, exploring every corner of this property is a breeze. Nature enthusiasts and hunters alike will delight in the abundant wildlife that roams these hills, making it an ideal recreational hunting property. On the premises, you'll find a cozy 2-bedroom, 1-bathroom farmhouse with wrap-around porches, offering the potential to be a lovely permanent residence or a charming hunting camp. Additional storage buildings on-site add to the property's practicality. Situated just 15 minutes from Rome, Georgia, and a mere 18-minute drive to Adairsville, Georgia, this secluded gem is the perfect fusion of rural tranquility and convenience, making it a must-see for those seeking a peaceful retreat not too far from town.

If you're yearning for a place where the beauty of nature and the comfort of a rustic farmhouse blend seamlessly, 815 Flowery Branch Road is a hidden gem worth exploring. Don't miss the chance to make this property your own and experience the best of both worlds: a secluded haven with easy access to nearby towns. Contact us today to arrange a viewing and discover the endless possibilities that await you in this enchanting corner of Kingston, Georgia.

\$1mil+ Farm With Home • \$1,300,000

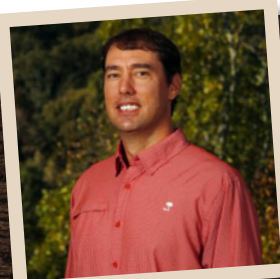
View online at <http://selg.biz/5665>



CHIP WILLIAMS

chip@selandgroup.com | 1-866-751-LAND | (256) 786-9108

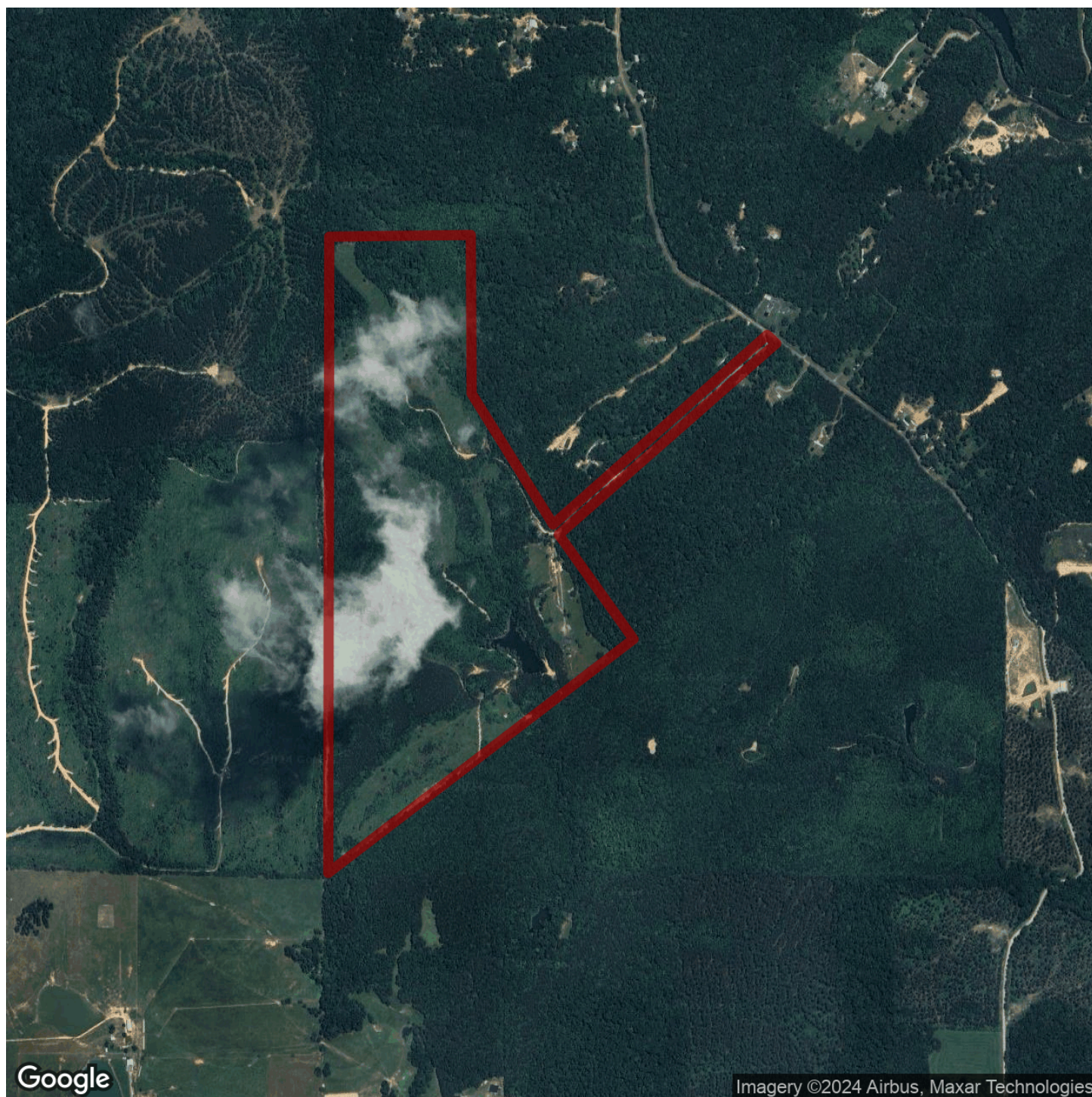




CHIP WILLIAMS

chip@selandgroup.com | 1-866-751-LAND | (256) 786-9108

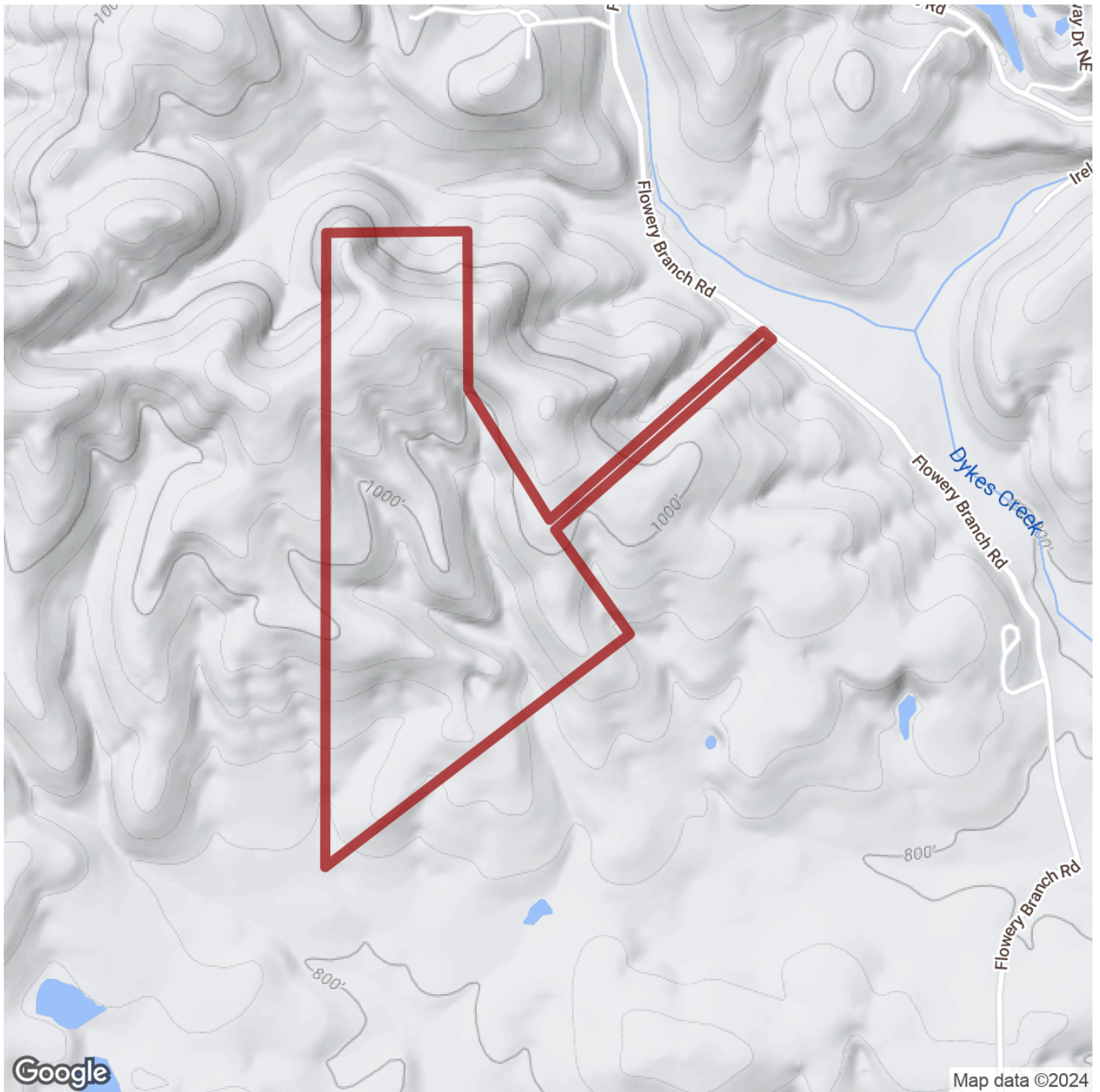




CHIP WILLIAMS

chip@selandgroup.com | 1-866-751-LAND | (256) 786-9108

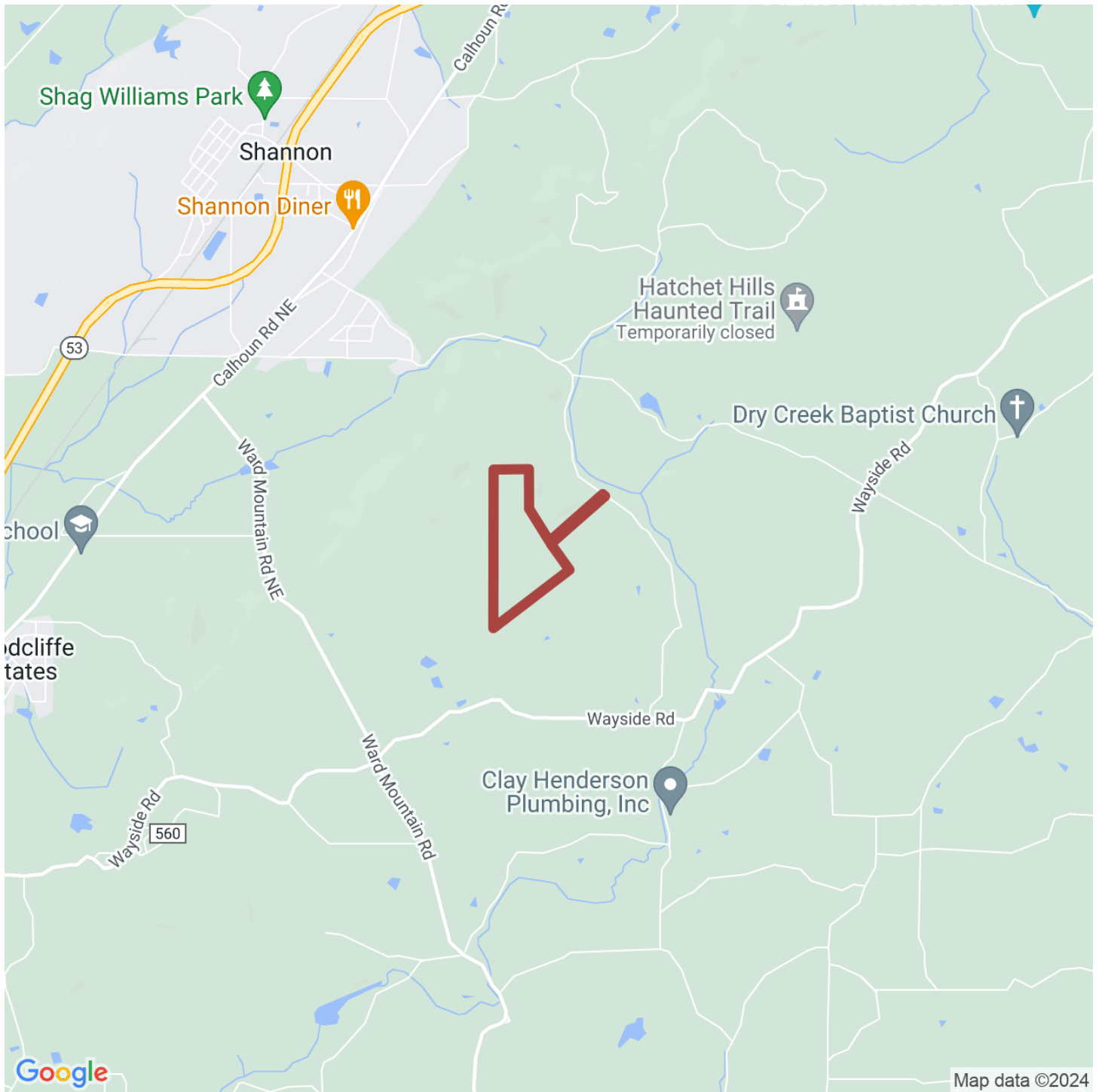




CHIP WILLIAMS

chip@selandgroup.com | 1-866-751-LAND | (256) 786-9108





CHIP WILLIAMS

chip@selandgroup.com | 1-866-751-LAND | (256) 786-9108

