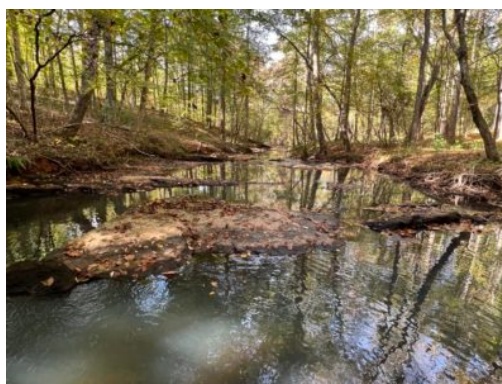


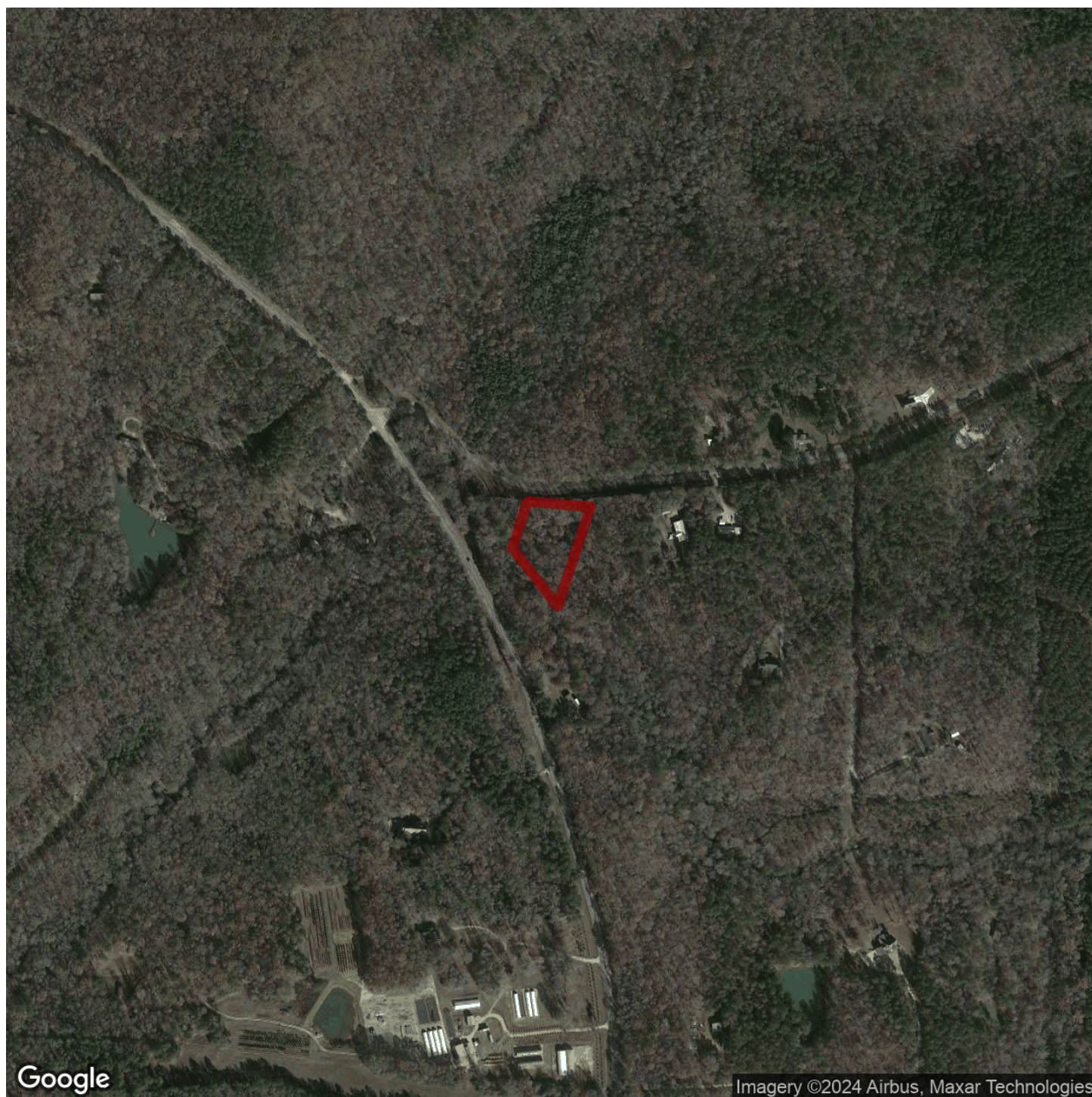
3+/- acres in Lee County, Alabama

Located within the Auburn City limits, 5 rare and beautiful estate lots comprise Swingle Creek Estates. Each lot is positioned on the banks of the rippling Swingle Creek. Majestic oaks canopy the homesites and drives. Lot 2 features majestic oaks framing the homesite on a hill. From the homesite your view slopes down to the crystal clear creek with small rippling granite rock waterfalls. Truly a masterpiece waiting for the perfect home and owner.

Loachapoka Water Authority, Alabama Power and Fiber are all available. Soil testing has been completed around homesites to ensure septic capabilities. These lots are build ready and have limited covenants that allow for flexibility yet protection for your future estate. Builder's and House Plans must be approved by Architectural Board.

Acreage with Homesite · \$274,900
View online at <http://selg.biz/9970>





Google

Imagery ©2024 Airbus, Maxar Technologies

selandgroup.com

1-866-751-LAND





