

23+/- acres in Chilton County, Alabama

The 23-acre parcel is predominantly open pasture land, offering an ideal canvas for agricultural or residential use. It is situated between Thorsby, Alabama, and Clanton, Alabama, with convenient access via paved road frontage on County Road 753. This accessibility ensures that the property is easily reachable and connected to nearby towns and amenities.

The presence of power and water utilities adds to the property's appeal, making it ready for development and facilitating various land-use possibilities. The availability of utilities simplifies the process of establishing multiple home sites on the land, making it suitable for residential purposes. With several nice farms in the vicinity, this parcel benefits from a rural, agricultural setting, fostering a serene and picturesque environment for potential buyers.

Acreage with Homesite • \$165,000
View online at <http://selg.biz/1162>



JOHN MORRIS

johnmorris@selandgroup.com | 1-866-751-LAND | (205) 901-9397





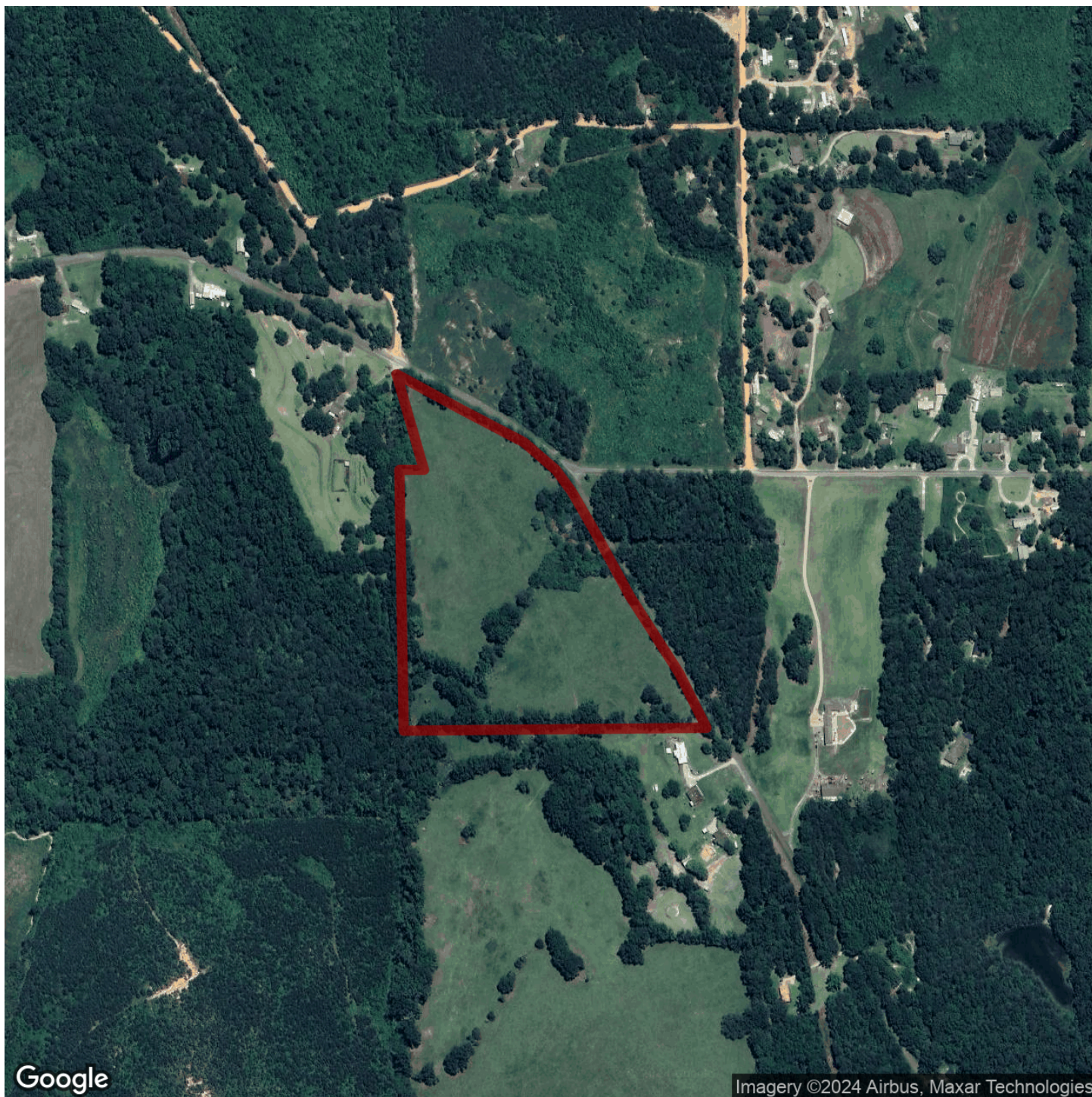
Southeastern LAND GROUP



JOHN MORRIS

johnmorris@selandgroup.com | 1-866-751-LAND | (205) 901-9397





Google

Imagery ©2024 Airbus, Maxar Technologies



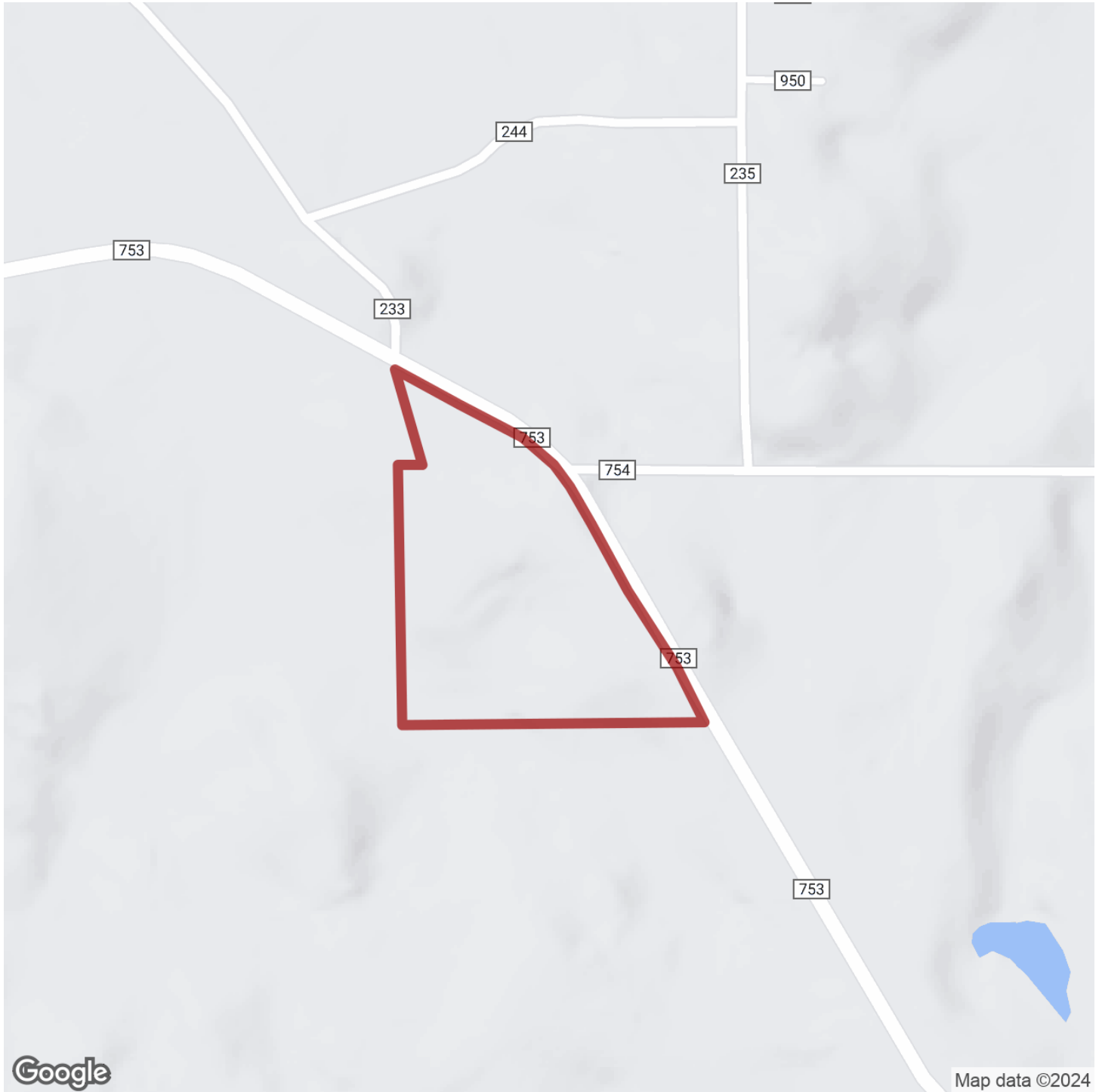
JOHN MORRIS

johnmorris@selandgroup.com | 1-866-751-LAND | (205) 901-9397



REALTOR

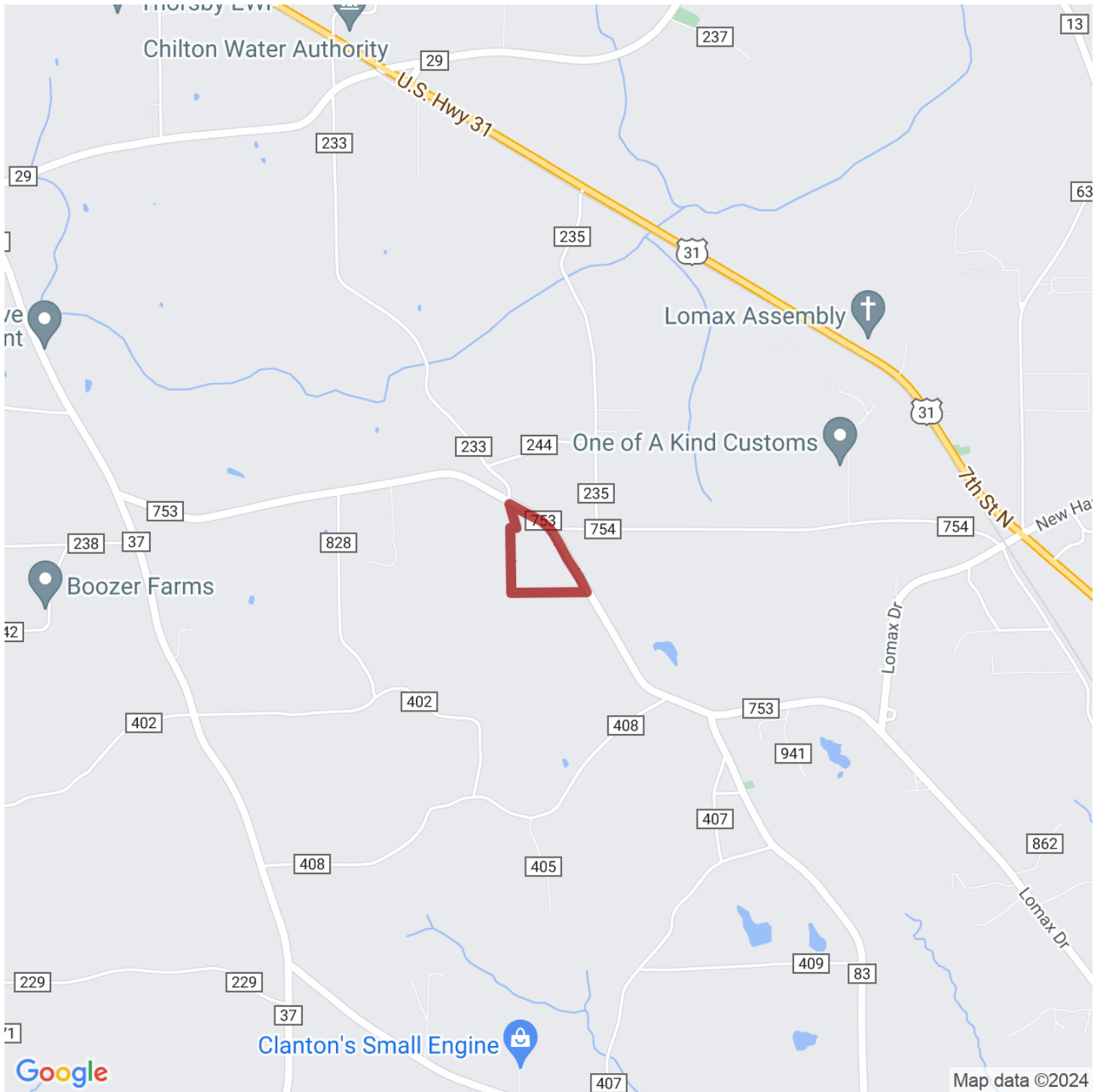
EQUAL HOUSING
OPPORTUNITY



JOHN MORRIS

johnmorris@selandgroup.com | 1-866-751-LAND | (205) 901-9397





JOHN MORRIS

johnmorris@selandgroup.com | 1-866-751-LAND | (205) 901-9397

