

12.30+/- acres in Tallapoosa County, Alabama

CUSTOM BUILD YOUR DREAM HOME on this great mini farm property in the highly desirable area of Camp Hill, very close to Waverly. This tract is conveniently located between the Auburn/Opelika and Lake Martin areas. It features a flowing stream at the southwest corner of the property, surrounded by beautiful hardwood timber. This tract would set up nicely with a conversion of pasture on the front of the property with, a mix of the colorful hardwoods and potential homesites towards the back.

It has paved road frontage on Jackson Road and dirt road frontage on Tallapoosa Farm Road. It has power and water accessibility.

Give Jessica Anderson or Brian Watts a call to schedule your showing!

Mini farm • \$199,500

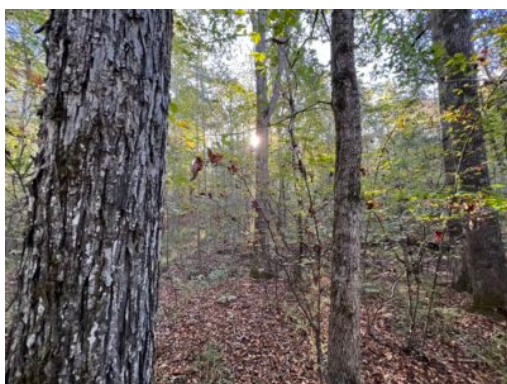
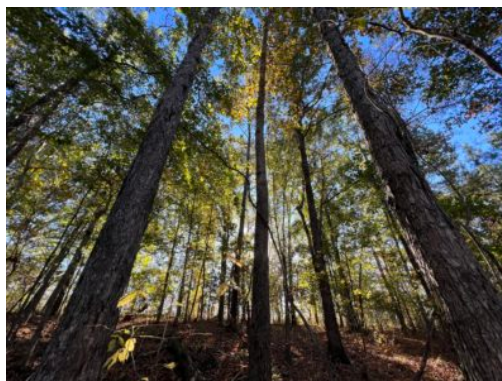
View online at <http://selg.biz/2449>



BRIAN WATTS

brian@selandgroup.com | 1-866-751-LAND | (334) 707-4273





BRIAN WATTS

brian@selandgroup.com | 1-866-751-LAND | (334) 707-4273





Google

Imagery ©2024 Airbus, Maxar Technologies



BRIAN WATTS

brian@selandgroup.com | 1-866-751-LAND | (334) 707-4273





BRIAN WATTS

brian@selandgroup.com | 1-866-751-LAND | (334) 707-4273





BRIAN WATTS

brian@selandgroup.com | 1-866-751-LAND | (334) 707-4273

