

1028+/- acres in Jefferson County, Alabama

Rock Mountain Farms, is a property in a class of its own! Conveniently located 20 minutes from Birmingham, Alabama, this 1028+/- acre tract features one of the most well-appointed lodges in the Southeast.

The lodge at Rock Mountain Farms has redefined expectations for hunting and outdoor retreats. There is plenty of room for guests in the 12,000 square foot lodge, which features:

- 9 bedrooms
- 12 bathrooms
- A full commercial kitchen

Every square foot of space was carefully designed and has been maintained in pristine condition. (Refer to the end for more information on rooms.) For added entertainment there is a Full Swing, Pro-series Golf Simulator in the main lodge, and an 18 hole professionally designed disc golf course. There are over 2000 sq ft of covered porches which make the lodge's outdoor areas beyond compare. The impressive view from the lodge overlooks 150 acres of open rolling hills which include 14 acres of stocked lakes, a quail course, and scattered mature oak trees.

Mature upland hardwoods cover much of the property, with an extensive road system to access all areas which include bridges and streams throughout. This tract features over a dozen established food plots for hunting, these areas are also used to plant winter and summer crops for wildlife. 650+/- acres are under high fence, resulting in a meticulously managed herd of trophy whitetails. The property also hosts a healthy population of turkeys.

Rock Mountain Farms has something for everyone from enjoying the outdoors to relaxing and reconnecting. For more information on this property, contact Rick Bourne at 251-978-5455 or Austin Ainsworth at 256-295-0836.



AUSTIN AINSWORTH

aaainsworth@dreamranch.org | 1-866-751-LAND | (256) 295-0386



Location approximately: 20 miles from Birmingham, 20 miles from Ross Bridge, 20 miles from Marks Outdoors, 38 miles from Bryant Denny Stadium, and 28 miles Birmingham International Airport.

Lodge Room Breakdown:

Founder Suite 1-King with Shower & Tub

Founder Suite 2-King with Shower & Tub

Bedroom 3-(1) Queen & (1) Full (2nd floor) with Bathroom/Shower

Bedroom 4-King (2nd floor) with Bathroom/Shower

Bedroom 5-King Handicap Accessible (main floor) with Bathroom/Shower

Bedroom 6-Double Queen (basement/game room) with Bathroom/Shower

Bedroom 7-Double Queen (basement/game room) with Bathroom/Shower

½ Bath Main Floor

½ Bath Main Floor

½ Bath Basement/Gameroom

Cabin (attached to lodge)

Bedroom 1-double queen

Bedroom 2-double queen

*(2) bathroom/shower outside each bedroom



AUSTIN AINSWORTH

aaainsworth@dreamranch.org | 1-866-751-LAND | (256) 295-0386





Southeastern
LAND GROUP



*Loft- there are 4 built in queens & 2 built in bunk beds

\$1mil+ Estate/Rec. • \$13,500,000
View online at <http://selg.biz/7699>



AUSTIN AINSWORTH

aainsworth@dreamranch.org | 1-866-751-LAND | (256) 295-0386

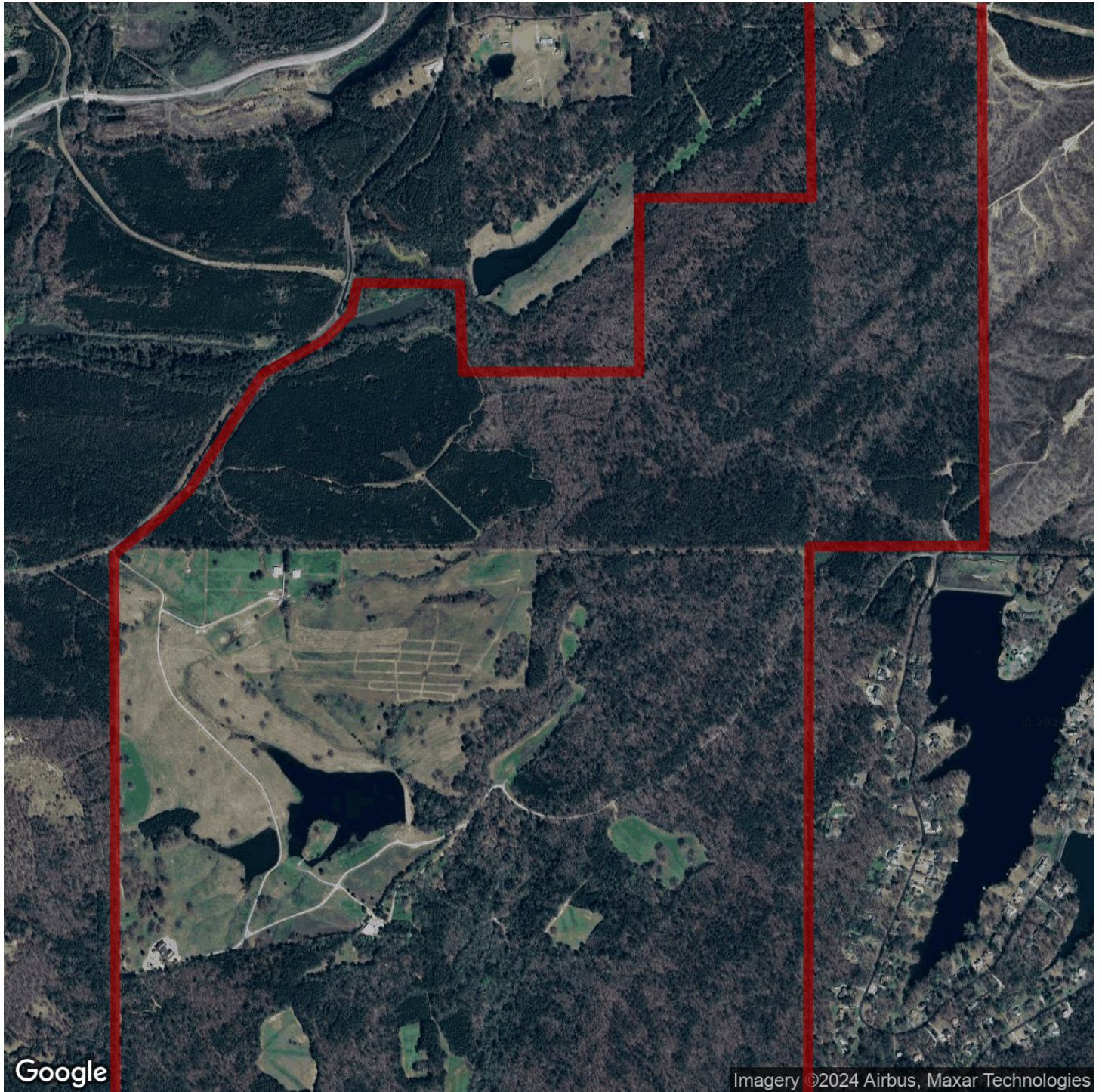




AUSTIN AINSWORTH

aainsworth@dreamranch.org | 1-866-751-LAND | (256) 295-0386

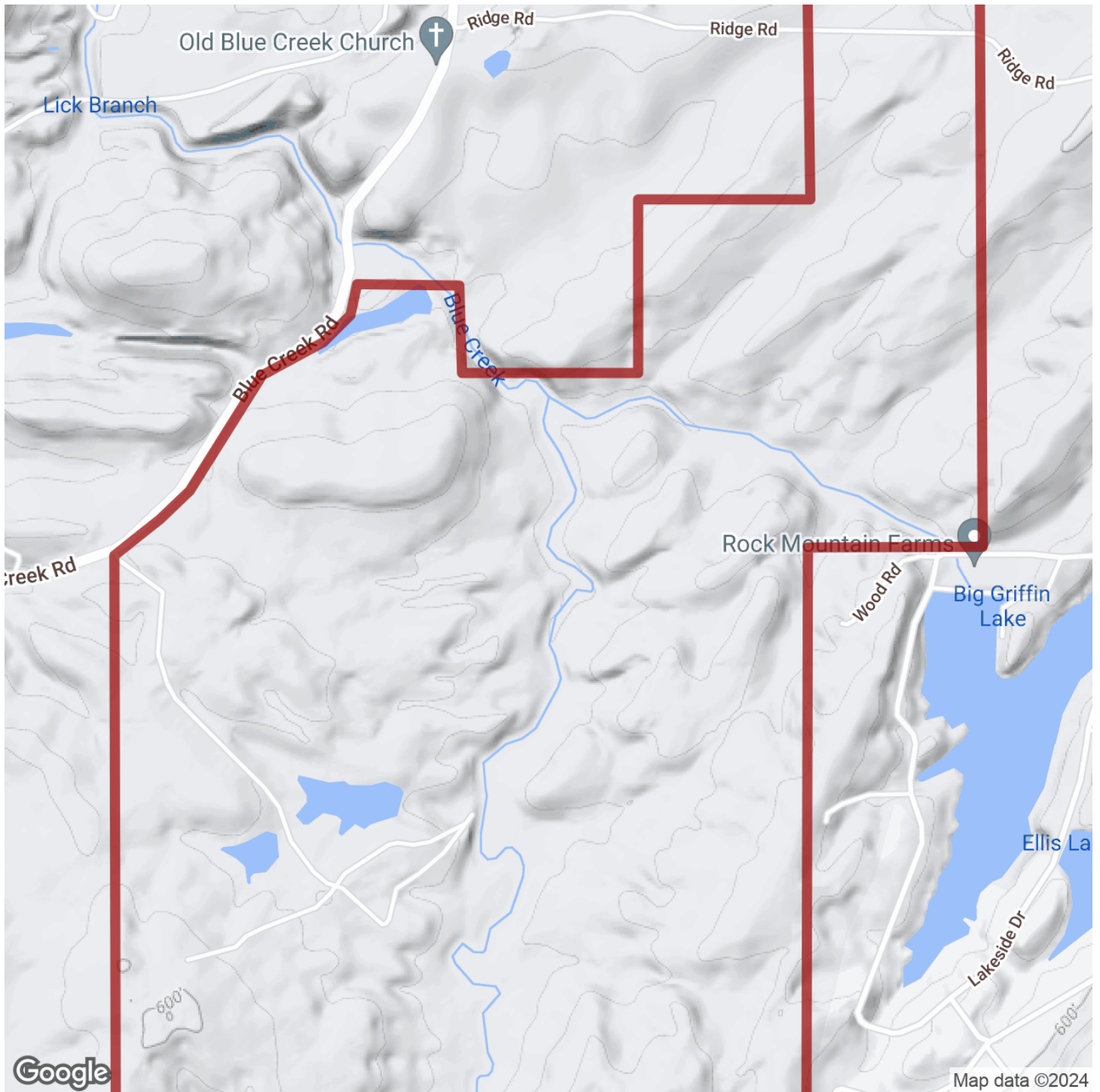




AUSTIN AINSWORTH

aaainsworth@dreamranch.org | 1-866-751-LAND | (256) 295-0386

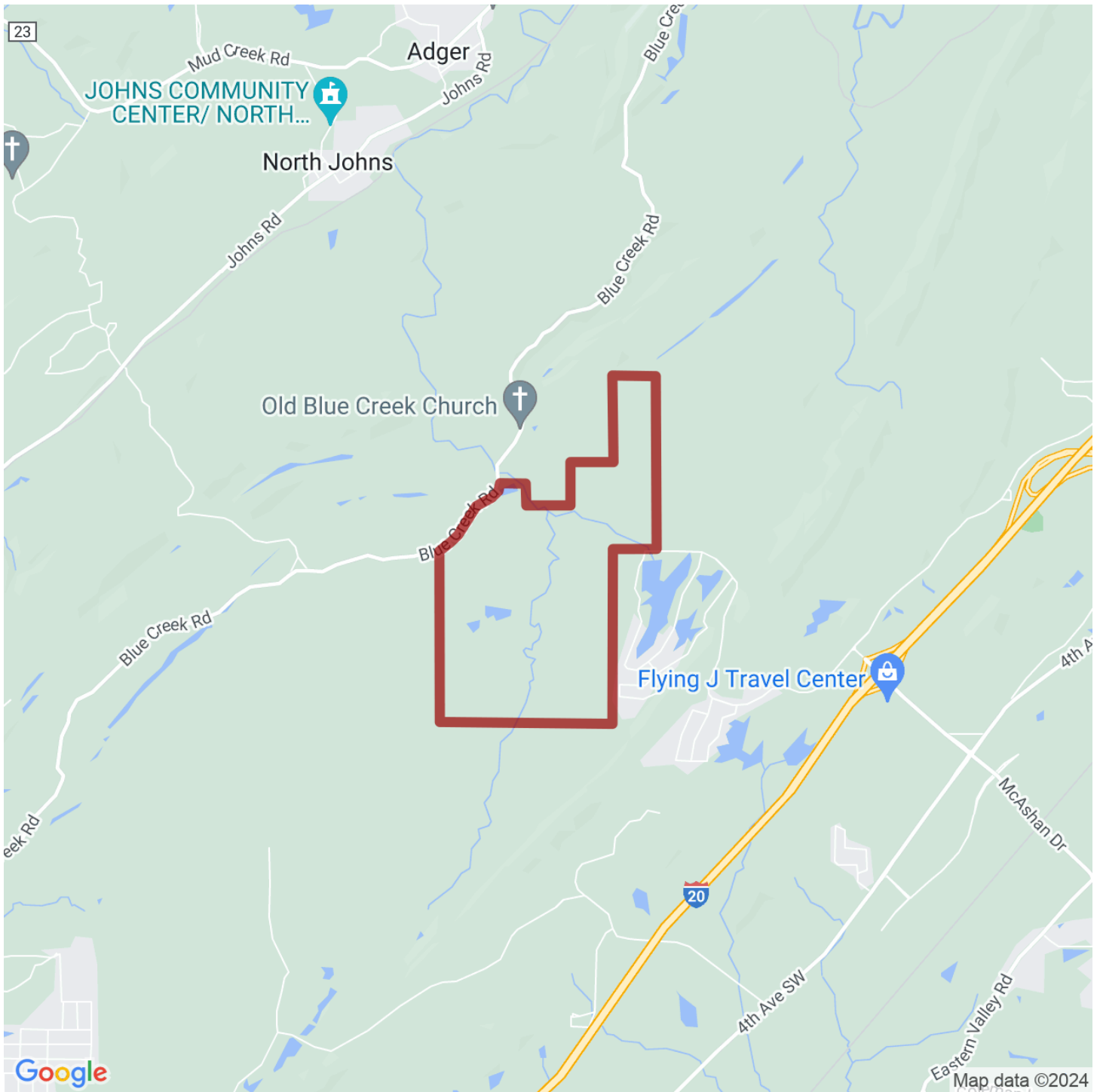




AUSTIN AINSWORTH

aaainsworth@dreamranch.org | 1-866-751-LAND | (256) 295-0386





AUSTIN AINSWORTH

aaainsworth@dreamranch.org | 1-866-751-LAND | (256) 295-0386

