

2.5+/- acres in Perry County, Alabama

2.5 acre +/- Home in Marion, AL

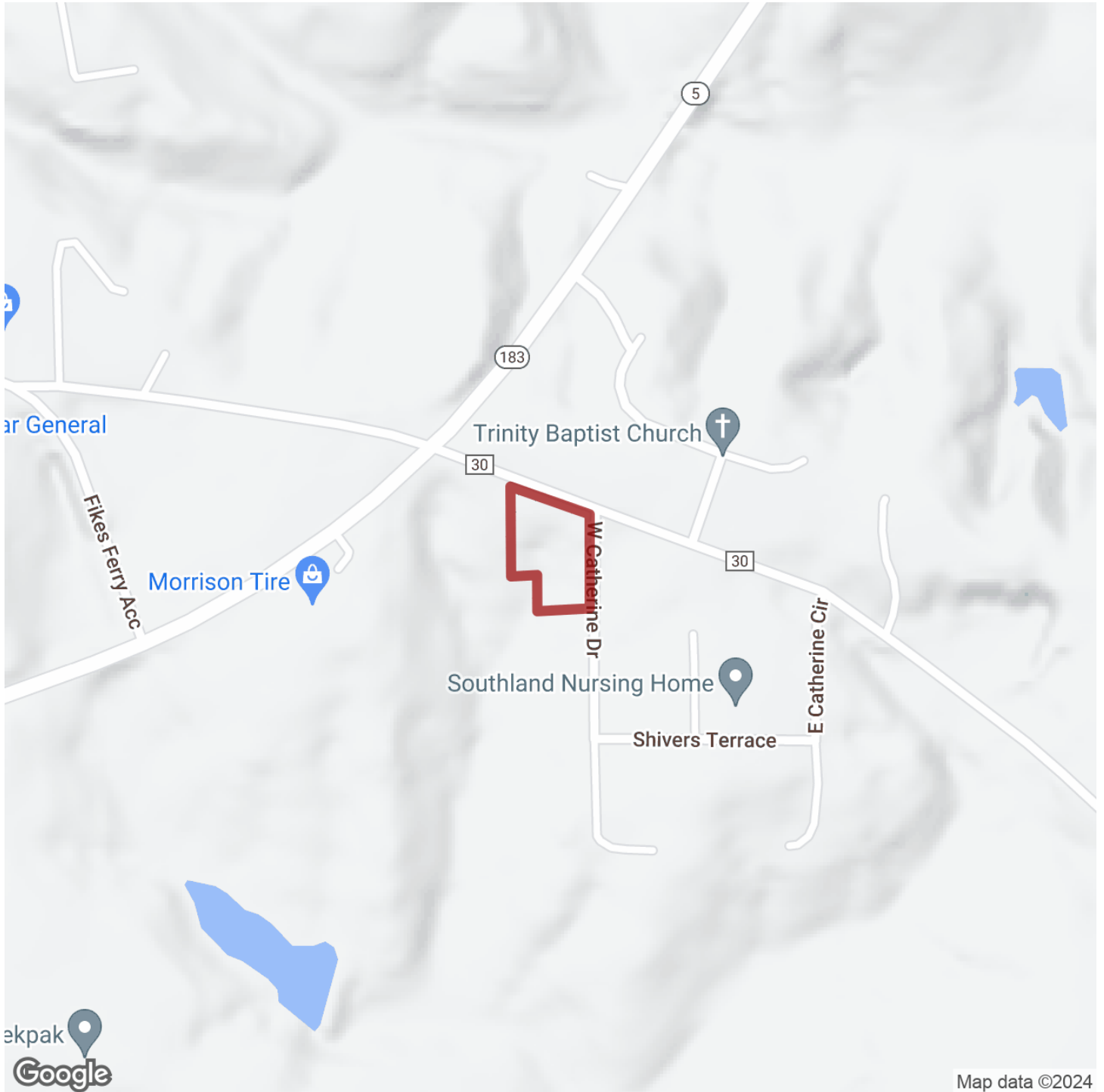
Come enjoy the slow pace of small town living in historic Marion, AL. This is a wonderful property with a huge open yard full of beautiful hardwoods and ornamental shrubbery. The brick home was built in 1965 and was constructed to last forever. The layout is made up of 3 bedrooms, 1 bath, living room with the dining area and kitchen adjoined. Off of the kitchen is an enclosed and open air raised patio perfect for enjoying an early cup of coffee or an evening dinner. Downstairs is a full basement which is mostly open with 2 smaller rooms. There is a sink with washer and dryer hookups and a ton of space for storage. Storage space is ample throughout the house with two closets in the hallway and a closet in each of the bedrooms. Two driveways from separate streets lead you to individual carports. One is located off the side of the house entering into the dining/kitchen area and the other in the back of the house with an entrance into the basement. There is a three bay open air pole barn in the back yard large enough to park or store equipment, vehicles, boats, RV/Campers etc. Attached to the barn is a large enclosed workshop. This is a great space for those needing a place for woodworking, storing gardening supplies or even a man/she cave.

This property is located at 411 Fikes Ferry Rd. Marion, AL. It is just minutes away from downtown Marion, 21 miles from Greensboro, 27 miles from Selma, 58 miles from Tuscaloosa and 76 miles from Birmingham. Please contact **Cooper Holmes @ 205-292-6356** for a tour of the home and grounds.

Acreage with Homesite · \$150,000
View online at <http://selg.biz/3155>







Map data ©2024

selandgroup.com

1-866-751-LAND



