

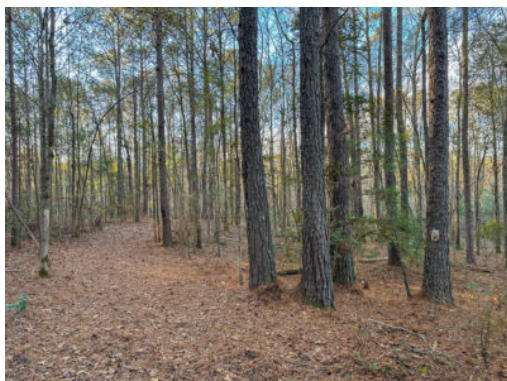
11+/- acres in Harris County, Georgia

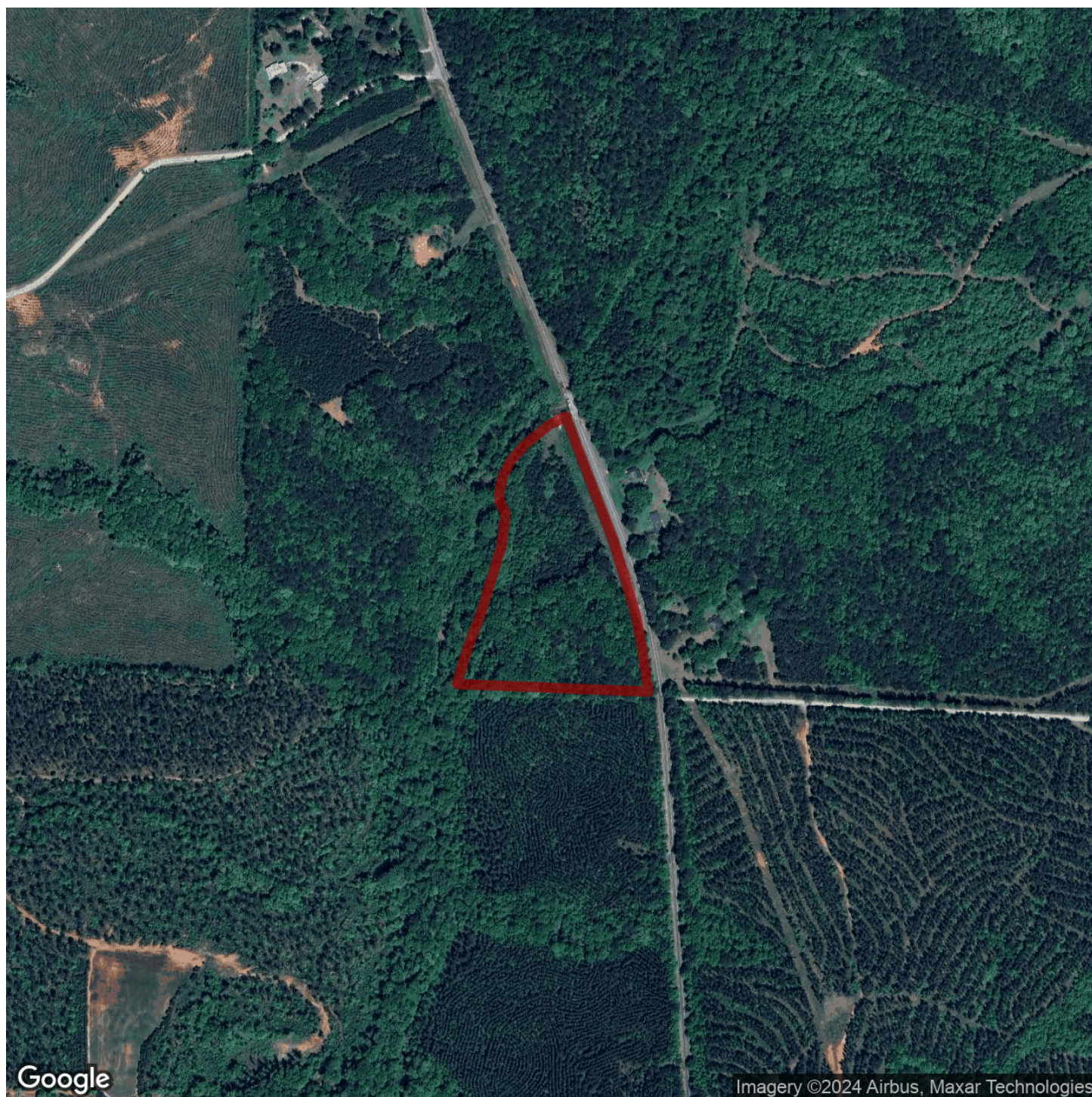
This 11 +/- acre parcel's location and features make it an ideal place for someone looking to build their dream home on acreage. Located on HWY 103 just 5 miles from I-85, it has a perfect balance between rural charm and proximity to urban amenities. The generous road frontage offers excellent accessibility. The property consists mainly of a mix of natural old growth pine and hardwood timber. There is also a 4 +/- acre area of old pasture which could be converted back to pasture or turned into a food plot or garden. To add to the beauty of this tract, sand creek makes up the entire north and western border. The topography lays so that the proposed homesite will be nestled in the timber overlooking the pasture and creek. Pair that with the abundance of wildlife on this tract, and you have your own slice of paradise!!

Location: From I-85, you will head east on HWY 18. In half a mile, you will take a right onto HWY 103. In less than 5 miles, the property will be on your right. It is conveniently located 7 miles to West Point, 20 miles to Lagrange, 34 miles to Auburn, 27 miles to Opelika, 33 miles to Columbus.

Call Dent Stallworth (334-539-0503) or Tyler Briggs (706-593-3639) to schedule a showing today.

Acreage with Homesite • \$0
View online at <http://selg.biz/5394>





Google

Imagery ©2024 Airbus, Maxar Technologies

selandgroup.com

1-866-751-LAND





