

# 6.70+/- acres in Etowah County, Alabama

6.70 +/- acres of level land located between Hokes Bluff and Piedmont. The property is covered in varying age pine timber with a few small hardwoods. Unrestricted. Water and power are available at the road. Hokes Bluff schools. Also only a short commute to Gadsden. Shown strictly by appointment only.

**Acreage with Homesite · \$37,900**  
**View online at <http://selg.biz/2475>**



**MATT BURNETT**

matt@selandgroup.com | 1-866-751-LAND | (256) 572-1474

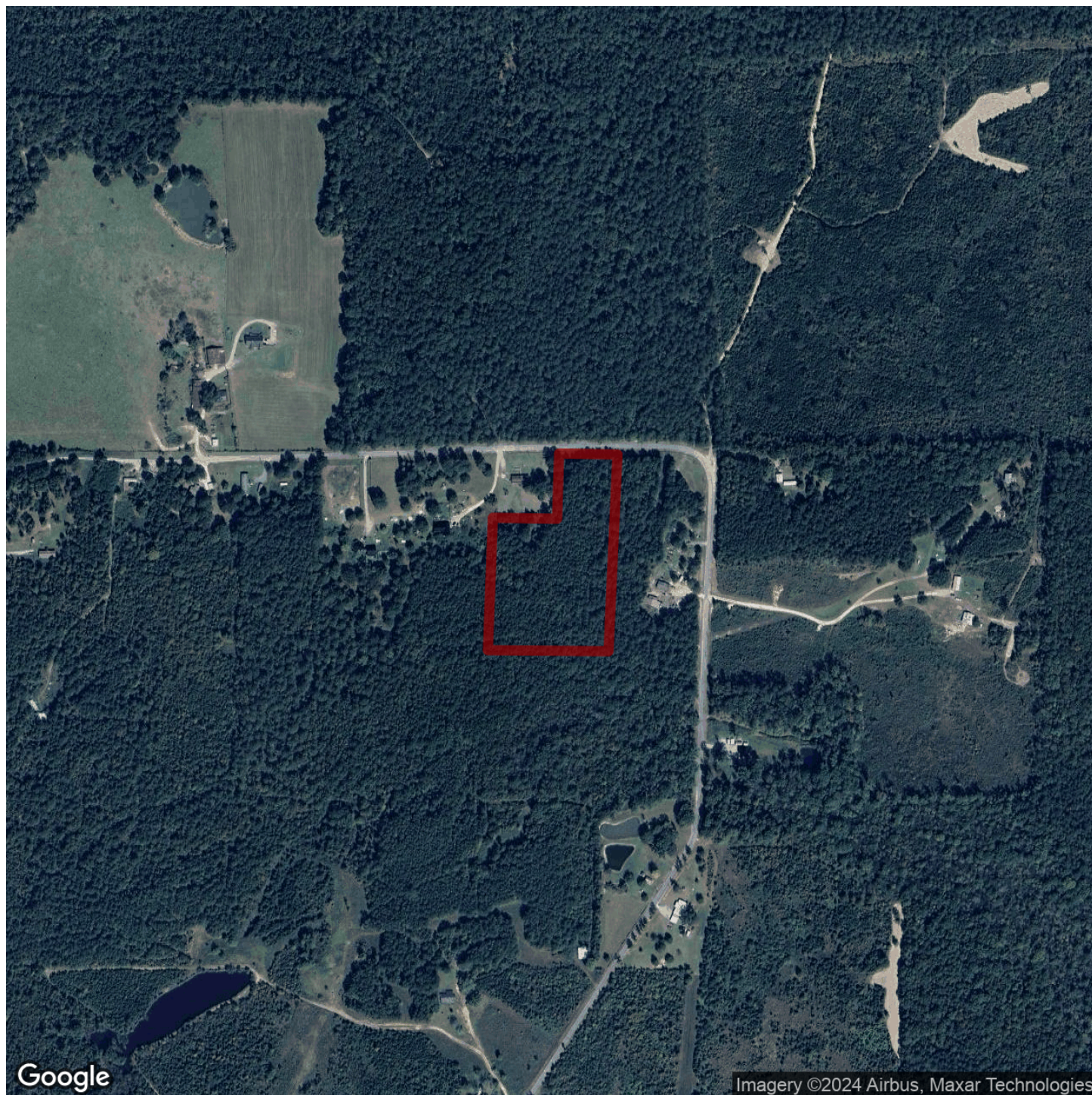




**MATT BURNETT**

matt@selandgroup.com | 1-866-751-LAND | (256) 572-1474





**MATT BURNETT**

matt@selandgroup.com | 1-866-751-LAND | (256) 572-1474

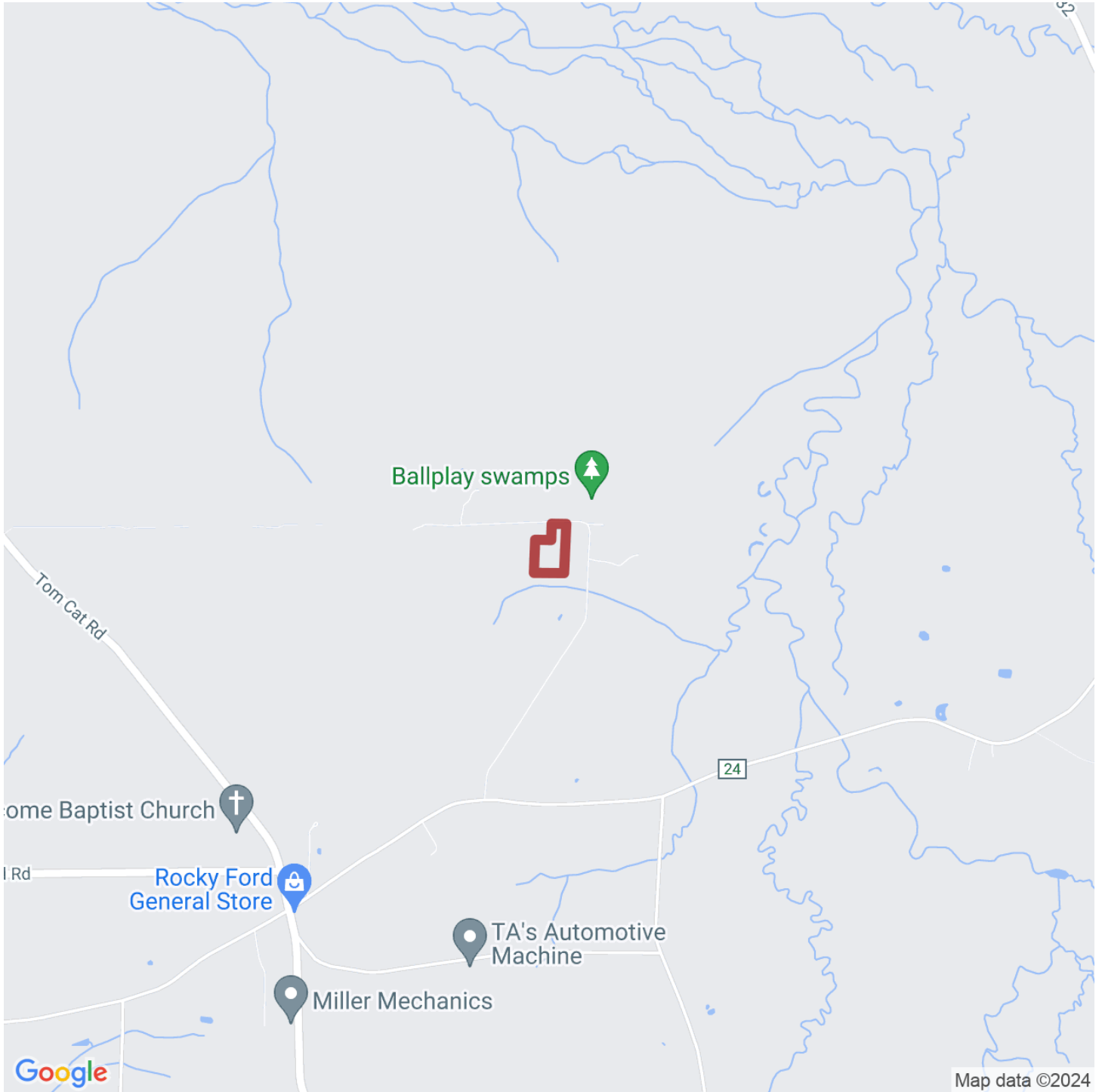




**MATT BURNETT**

matt@selandgroup.com | 1-866-751-LAND | (256) 572-1474





**MATT BURNETT**

matt@selandgroup.com | 1-866-751-LAND | (256) 572-1474

