

290+/- acres in Polk County, Georgia

Who appreciates the beauty of nature and the allure of rural living. The 290+/- acres allows for various uses, making it suitable for farming, ranching, or even creating a private retreat. This is also a great investment property to help diversify your portfolio.

The surrounding area boasts breathtaking natural landscapes and an abundance of wildlife, offering a serene escape from the hustle and bustle of city life. Whether you dream of building your dream home amidst rolling hills or envision starting your own farm, this property can turn your aspirations into reality. The terrain is favorable. The timber was harvested about 12-13 years ago with natural regeneration.

Don't miss out on this incredible opportunity to own a piece of Georgia on Elder Road. Embrace the freedom to create your own dream and let your imagination soar. With its size, zoning type, and idyllic location, this 290+/- acres is truly a blank canvas waiting for you to make it your own. Contact us today to schedule a viewing and start envisioning the possibilities!

Buyer's agent must show their buyer the property to receive full commission split. If Southeastern Land Group talks to buyer first or shows the property to you buyer initially your commission will be 1%.

More pictures coming soon!

Acreage with Homesite • \$638,000
View online at <http://selg.biz/0869>



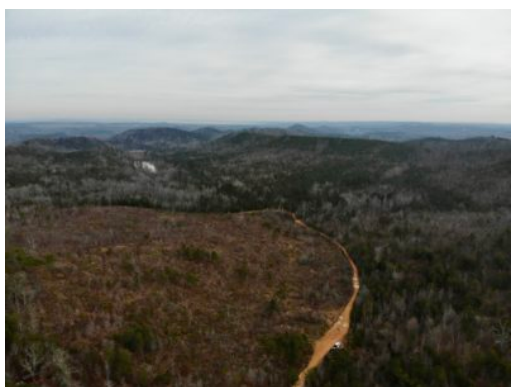
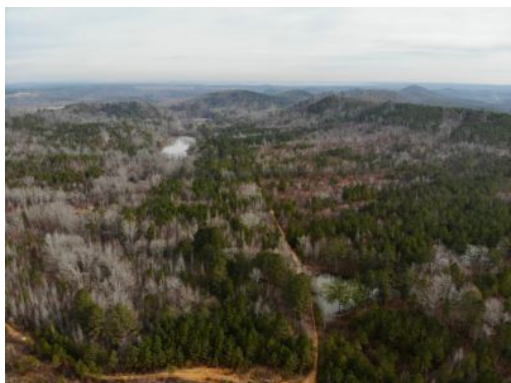
CHIP WILLIAMS

chip@selandgroup.com | 1-866-751-LAND | (256) 786-9108





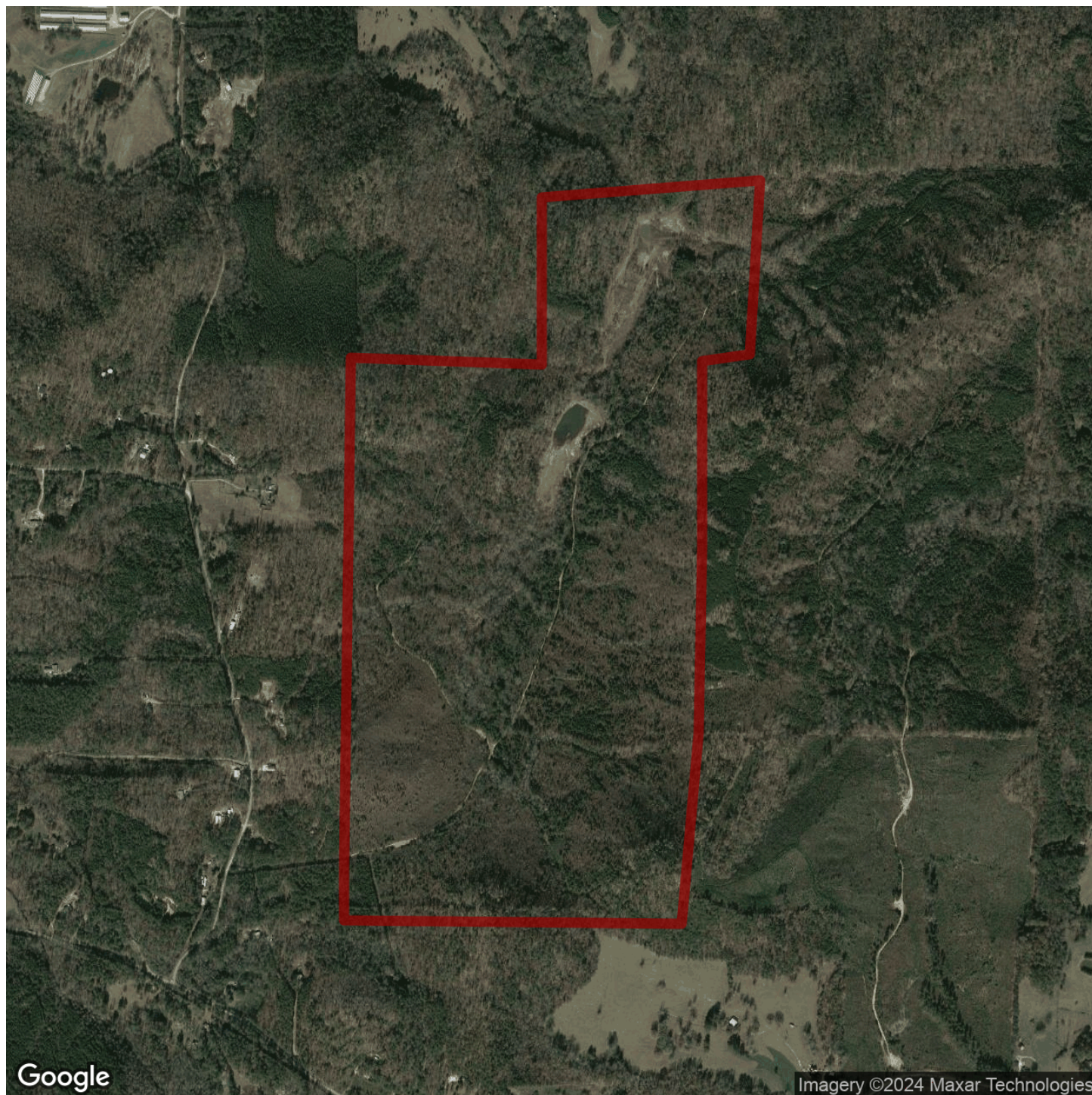
Southeastern LAND GROUP



CHIP WILLIAMS

chip@selandgroup.com | 1-866-751-LAND | (256) 786-9108

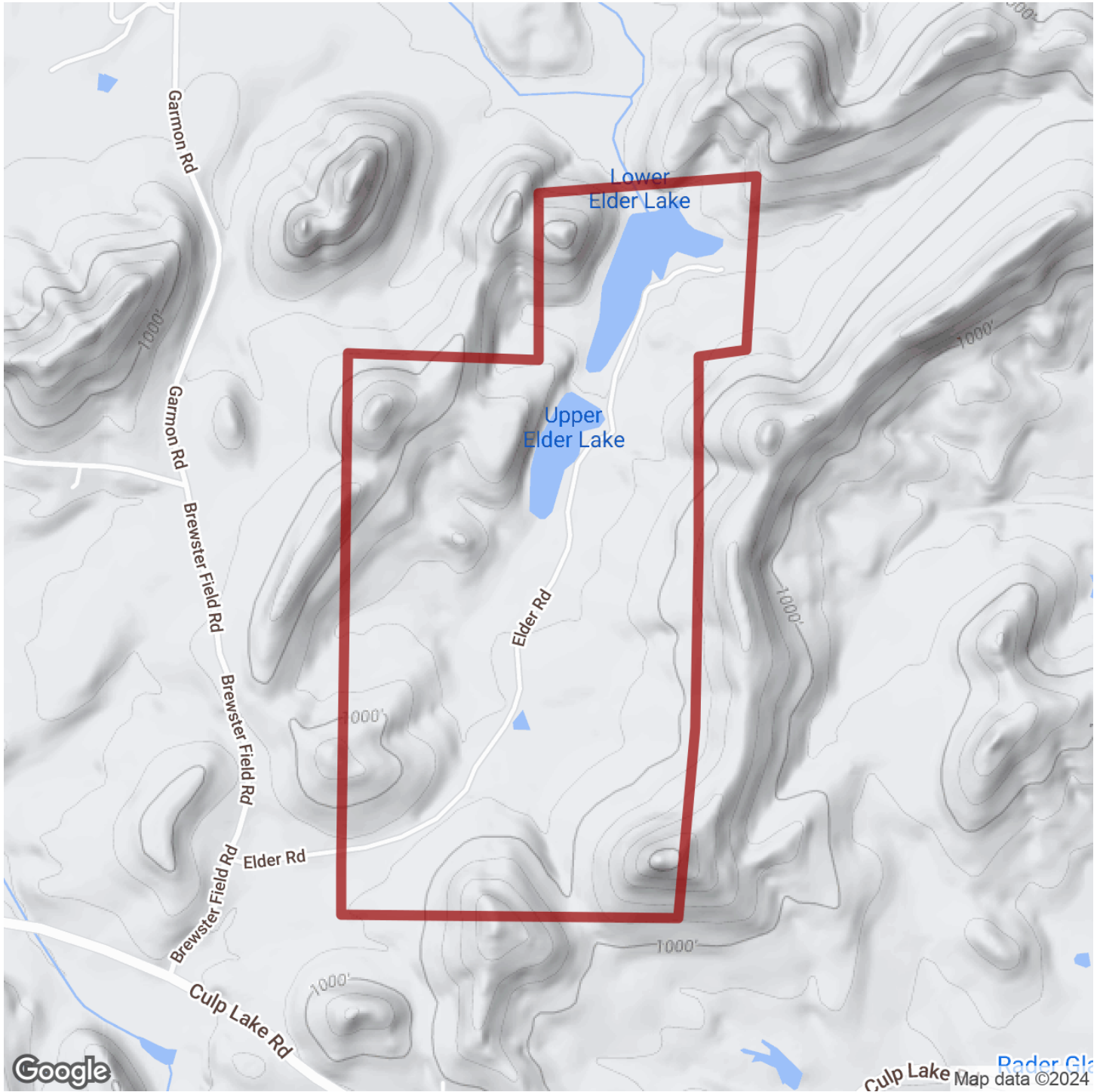




CHIP WILLIAMS

chip@selandgroup.com | 1-866-751-LAND | (256) 786-9108

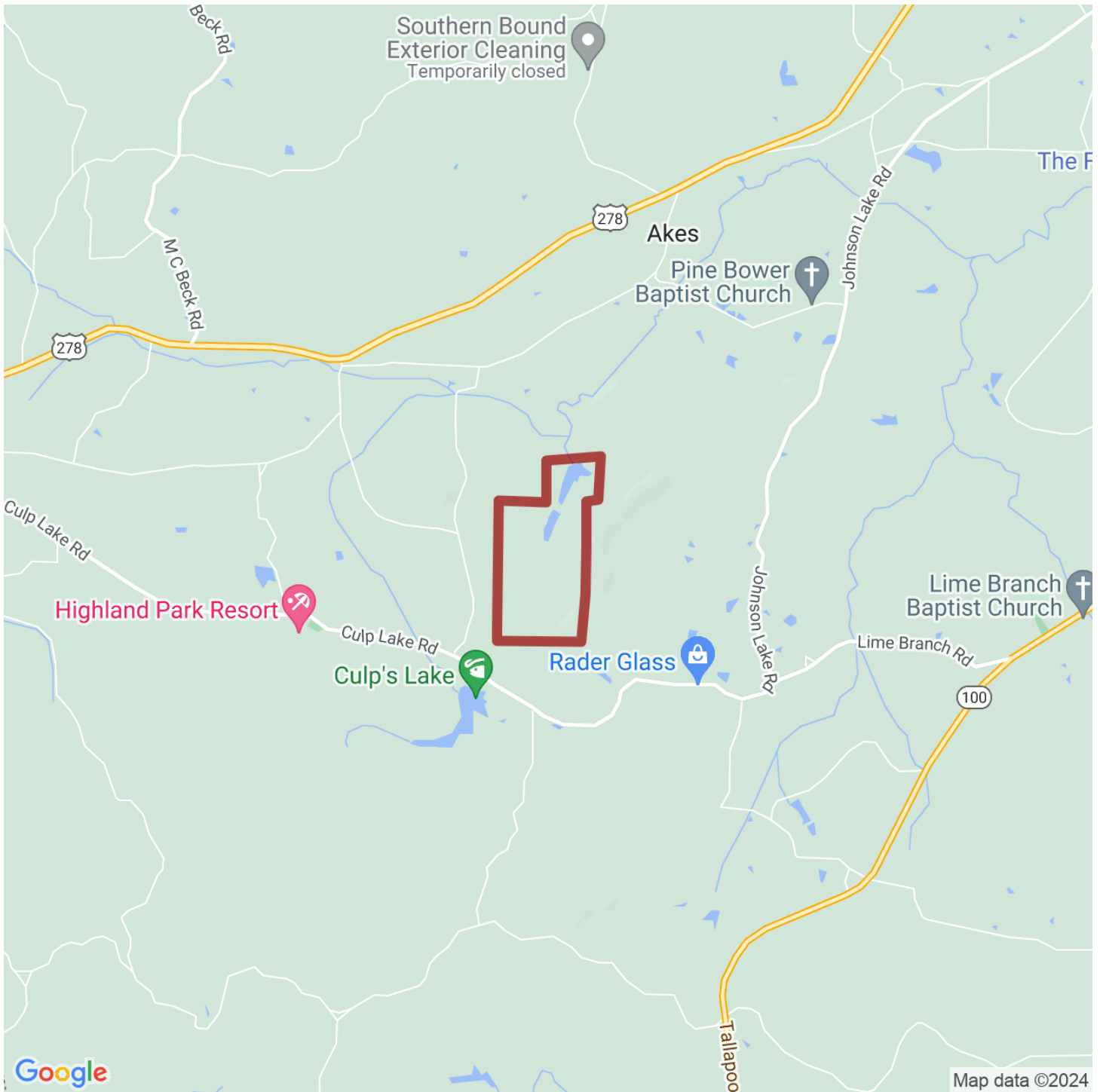




CHIP WILLIAMS

chip@selandgroup.com | 1-866-751-LAND | (256) 786-9108





CHIP WILLIAMS

chip@selandgroup.com | 1-866-751-LAND | (256) 786-9108

