

131.75+/- acres in Coosa County, Alabama

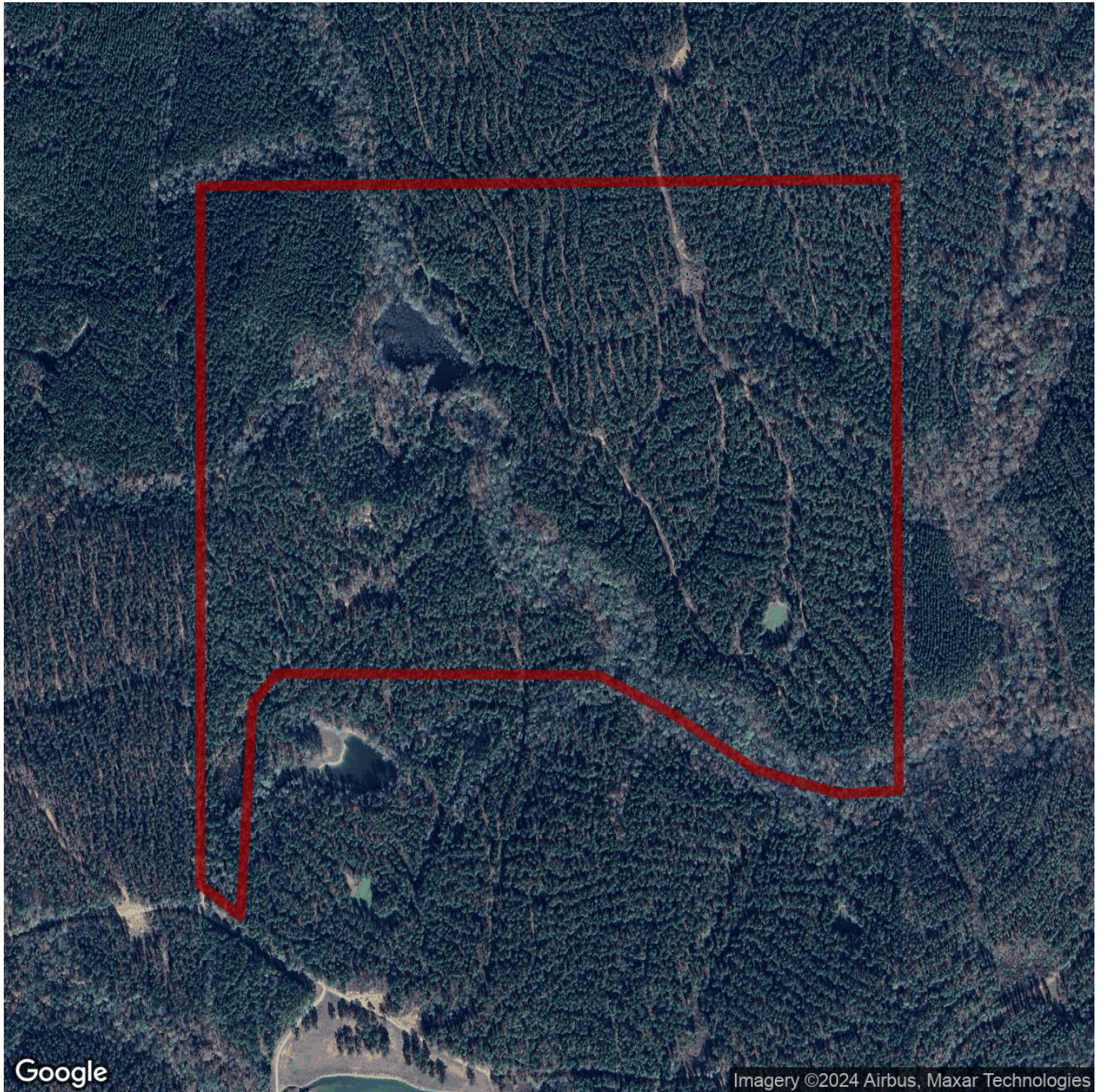
Woods and Water! Professionally managed pine plantation, beautiful flowing streams with nice hardwood bottoms. This one has everything you can ask for in a property! If you are looking for a fun recreational tract to hunt, play in the creek, ride ATV/UTVS, that is conveniently located to Highway 280, this is it! It is located on County Road 28, which is off of County Road 111, that comes off of 280. There is power available at the road. If you are looking to custom build a home or cabin, there are many great homesite locations that provide the privacy you are looking for. Approximately an hour to Birmingham, 30 minutes to the shores to beautiful Lake Martin, and approximately an hour to Auburn University, this is a conveniently located tract. The timber on the property is healthy and thriving and is located in good proximity to mills.

Give Candice or Brian a call to schedule your showing!

Timberland • \$434,775

View online at <http://selg.biz/0115>





Google

Imagery ©2024 Airbus, Maxar Technologies

selandgroup.com

1-866-751-LAND





