

3+/- acres in Elmore County, Alabama

Very private 3 acres with potential homesites and county road frontage close to Equality and Lake Martin. The property, which is bisected by a county road, features mature hardwoods and pines with many options. Develop your own homestead in the country or build the house of your dreams. There are mobile homes on the site which will be removed prior to sale.

Acreage with Homesite • \$35,000
View online at <http://selg.biz/6081>



JEFF HARDY

jeff@selandgroup.com | 1-866-751-LAND | (256) 749-3950





Southeastern
LAND GROUP



JEFF HARDY

jeff@selandgroup.com | 1-866-751-LAND | (256) 749-3950

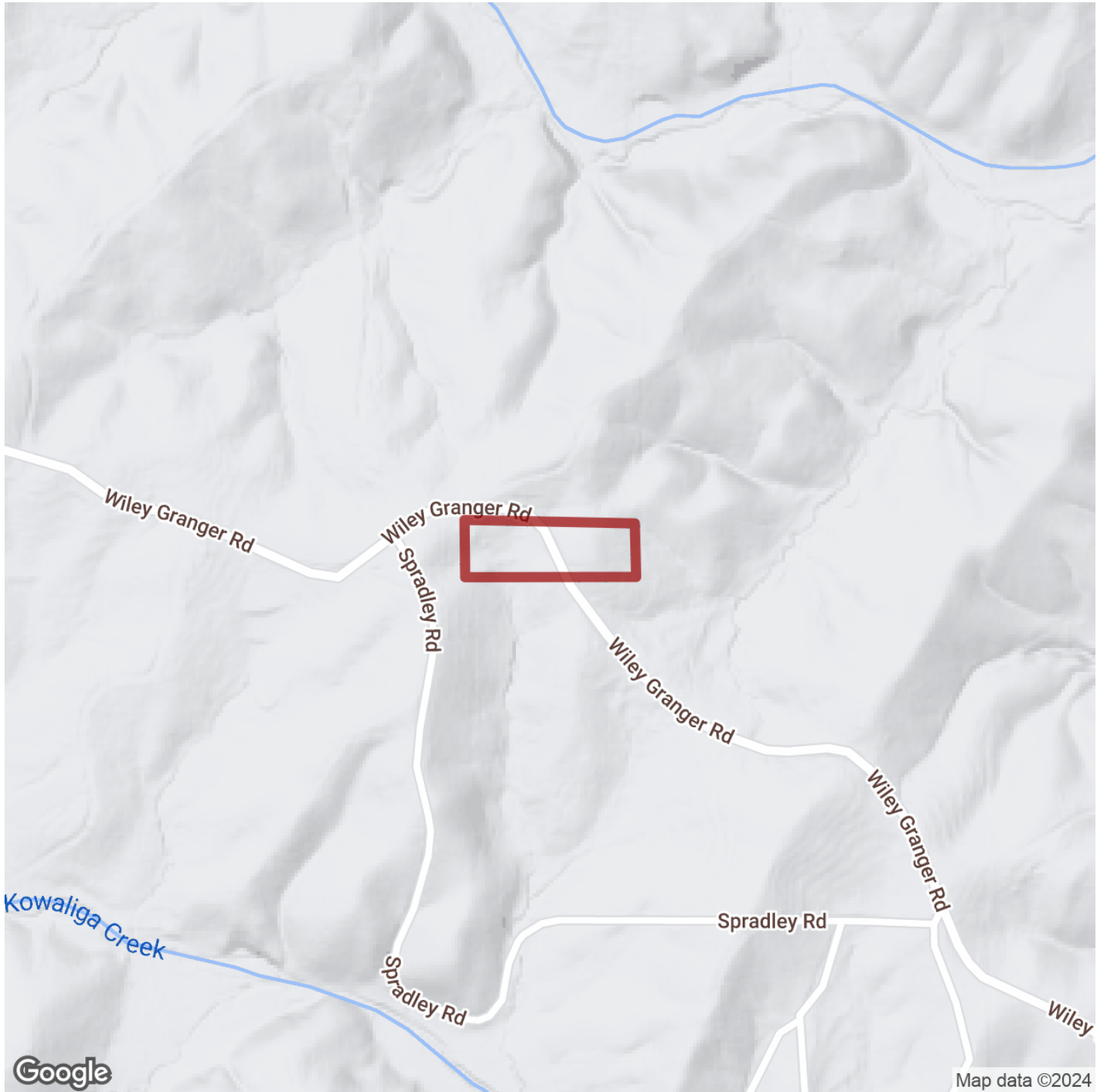




JEFF HARDY

jeff@selandgroup.com | 1-866-751-LAND | (256) 749-3950





JEFF HARDY

jeff@selandgroup.com | 1-866-751-LAND | (256) 749-3950





JEFF HARDY

jeff@selandgroup.com | 1-866-751-LAND | (256) 749-3950

