

62+/- acres in Jefferson County, Tennessee

If you have been looking for private property to build your dream home or farm, then don't miss this one! Located at the end of a county road just under 40 minutes from the heart of Knoxville and only 1 hour from Gatlinburg, TN. On this beautiful private property there are more than 3 miles of trails in place to enjoy hunting, off-roading, birding, horseback riding, or a peaceful stroll through the woods. There are mast producing trees, with plenty of established wildlife habitat hosting blackberry thickets and woody vegetation. Which is why both deer and turkeys frequent the property. The 80 +/- year old hardwoods on the property are accompanied by about half open fields for pasture or agriculture. The power and an improved driveway have already been put into place to take you to a ridge top for a beautiful homesite. Located on the ridge top, is the power and outlets for you to move in an RV or camper immediately after closing. The seller also has a soil survey and septic permit approved for the home site. The pond just past the gate entering the property was reconstructed in 2021, and a new culvert was added.

At the end of the county road you will have your own private driveway to access this property. Once on the property, you will find beautiful views of the distant mountains from the ridge top. Currently certified as a greenbelt property under grassland in Tennessee. This is the perfect property with the opportunity to purchase more acreage with a barn in the future. Like to fish or go boating on beautiful mountain lakes? It's also just a short 15 minute drive to Douglas lake or the Cherokee Reservoir! This 62 acres will not last long and the pictures can not display all the unique aspects of this property's natural beauty. Most of the property is between 1400-1500 feet in elevation. Below is the distance to several key cities and attractions in the area.

-34 miles to Downtown Knoxville, TN

-34 miles to the great Smoky Mountain National Park!!!

-26 miles to Sevierville, TN

-32 miles to Pigeon Forge, TN



Southeastern
LAND GROUP



-8 Miles to Douglas Lake

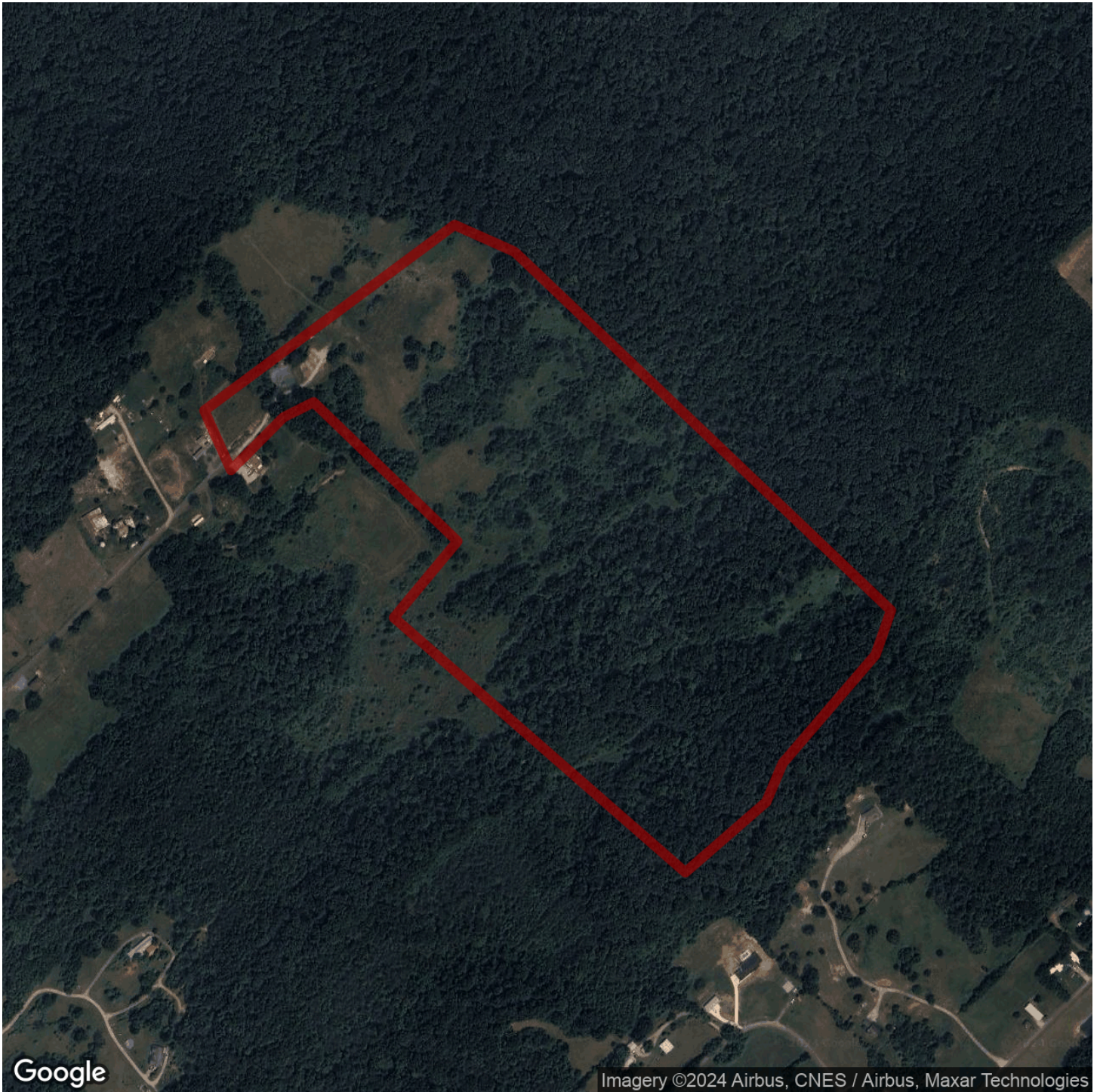
-11 miles to Cherokee Reservoir

Acreage with Homesite · \$849,000
View online at <http://selg.biz/4461>

selandgroup.com | 1-866-751-LAND







selandgroup.com

1-866-751-LAND



