

150+/- acres in Pike County, Alabama

SOLD! The Troy Longleaf Tract is ± 150 acres located just 2 miles from the Troy City limits along Highway 87 (Elba Highway) in the path of growth from Troy. This tract lays well with frontage along Highway 87 and County Road 3051. This property has potential for future development or would make a perfect place to have a recreational getaway close to the amenities of Troy. This property has several nice building sites. Land types include: ± 87 acres of longleaf pines that area approximately 4 years old, ± 53 acres of natural timber and ± 10 acres of open fields. This property has a nice internal road system providing access to the tract. There is nice flowing stream that runs through the back side of the property.

Legal: the property consists of ± 150 acres in Section 28 Township 9 North Range 21 East of Pike County, Alabama. It consists of parcel numbers 55 17 08 28 0 000 002.000 and 55 17 08 28 0 000 003.000 . Property taxes for the 2023 tax year were \$206.51 total.

Location: The Troy Longleaf Tract has frontage along Highway 87 (Elba Highway) and County Road 3051 with utilities available at its road frontage. It is located ± 2 miles from the City of Troy, ± 30 miles from Enterprise, ± 54 miles from Dothan and ± 57 miles from Montgomery.

Hunting · \$495,000

View online at <http://selg.biz/7360>



CALVIN PERRYMAN

calvin@selandgroup.com | 1-866-751-LAND | (334) 419-7277





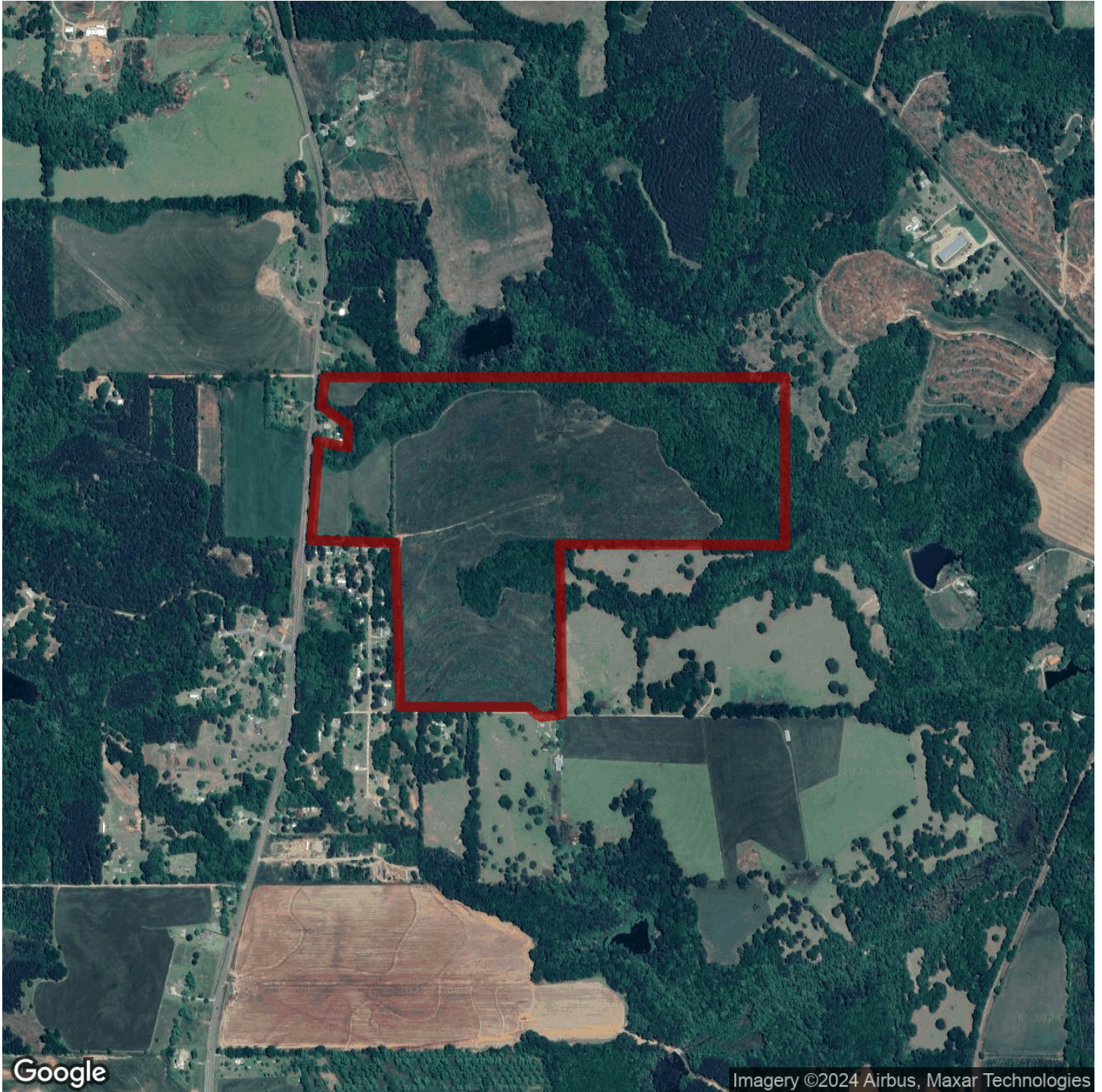
Southeastern LAND GROUP



CALVIN PERRYMAN

calvin@selandgroup.com | 1-866-751-LAND | (334) 419-7277

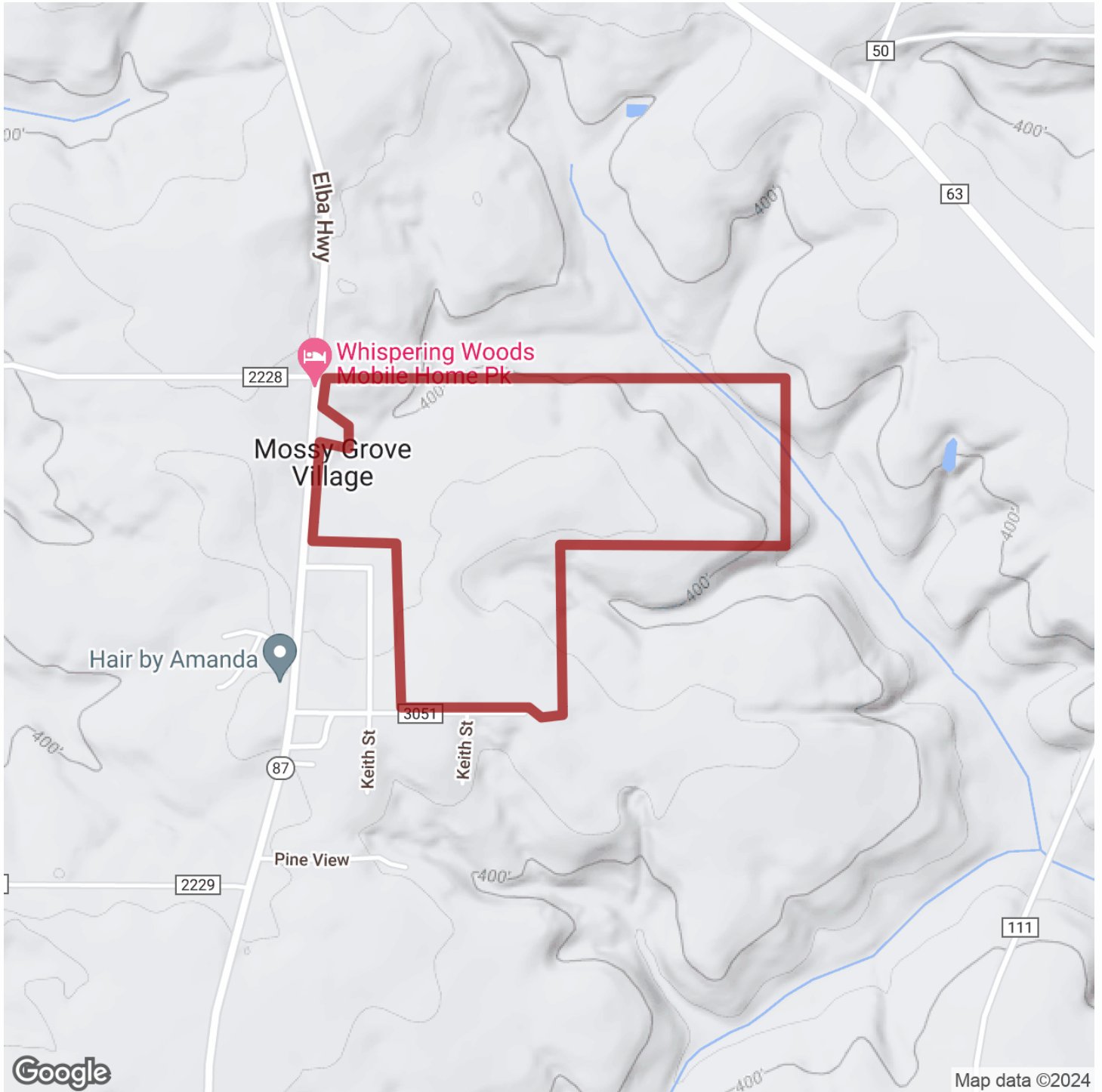




CALVIN PERRYMAN

calvin@selandgroup.com | 1-866-751-LAND | (334) 419-7277

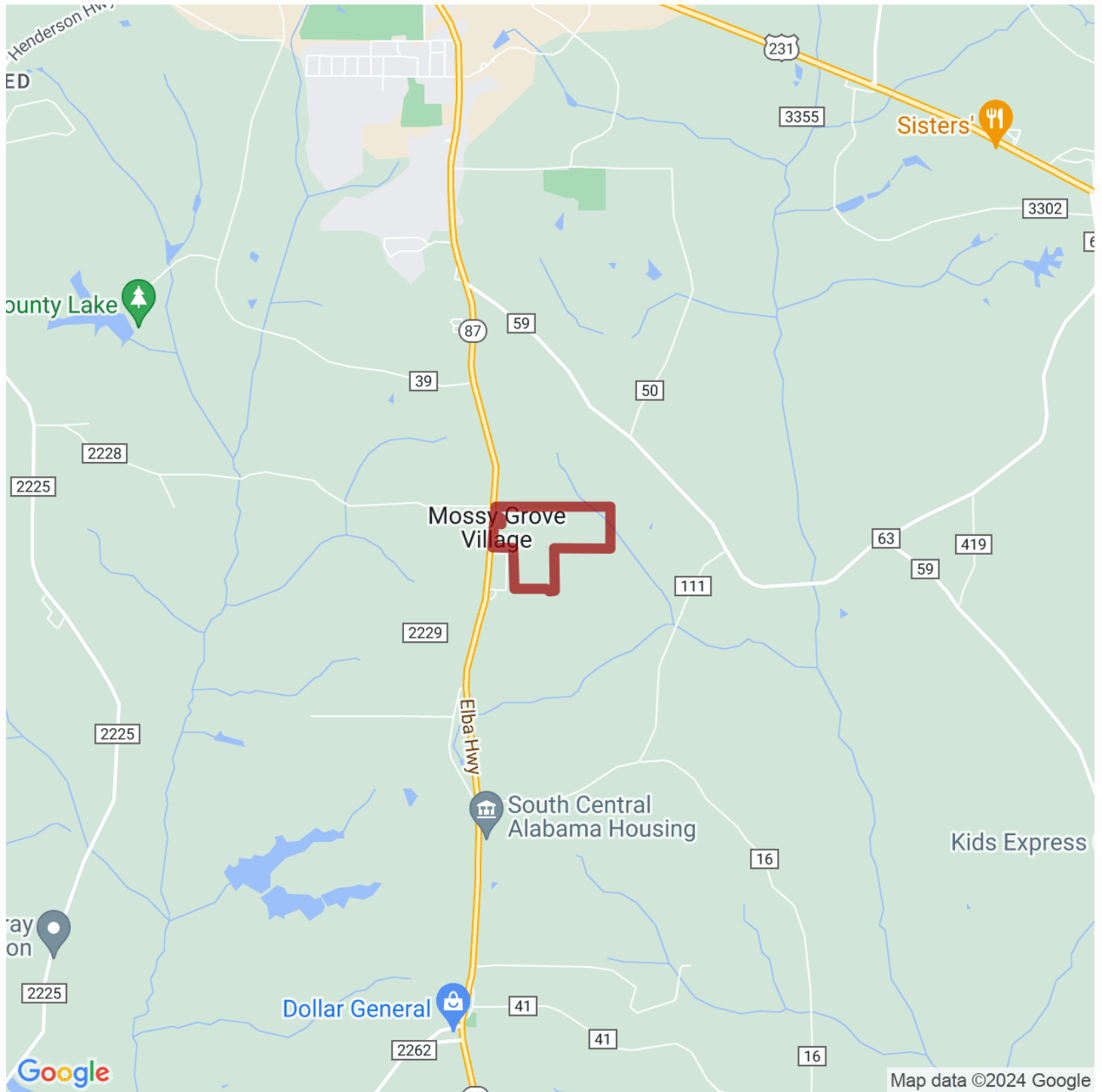




CALVIN PERRYMAN

calvin@selandgroup.com | 1-866-751-LAND | (334) 419-7277





CALVIN PERRYMAN

calvin@selandgroup.com | 1-866-751-LAND | (334) 419-7277

