

# 13.52+/- acres in Gadsden County, Florida

Florida-Georgia Line Living! This beautiful property is 13.5 acres +/- of wooded land on Johnson Rd. in Gadsden County, FL, bordering the Florida-Georgia State Line. The land offers opportunities for building, farming, recreation and outdoor living. With power lines adjacent and paved road access, accessibility and the chance for improvements are already in place. Surrounding properties are working farms with cows and horses grazing nearby. The land is fully wooded with big pines and hardwoods, and beautiful elevation changes.

This property will appeal to anyone looking to "get away from it all" and experience country-living. For homesteaders looking to establish their self-sufficient lifestyle, this property provides an ideal setting. The spacious lot accommodates various home designs, allowing you to customize your living space to your needs. With fertile soil and plenty of acreage, the property offers potential for small-scale farming and agriculture. Cultivate crops, raise livestock, or simply enjoy watching the wildlife around your new home.

Located within easy reach of Tallahassee, Florida's capital city, urban amenities are accessible while still enjoying rural tranquility. Food, shopping, entertainment and culture are all within a short drive. From the property, you can be at the state capitol in the center of downtown in 30 minutes. Shopping and dining are even closer. Experience the balance of countryside living and city convenience on Johnson Rd. - give us a call today to schedule your tour.

**Mini farm • \$162,240**

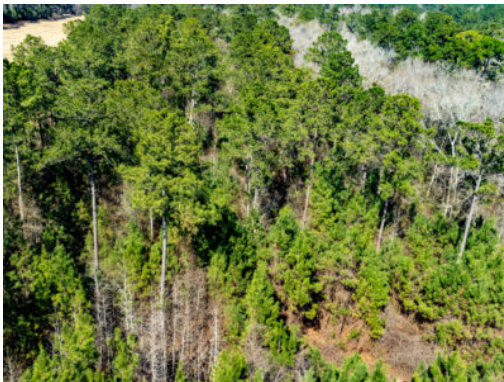
**View online at <http://selg.biz/3379>**



**DANIEL HAUTAMAKI**

danielh@selandgroup.com | 1-866-751-LAND | (850) 688-0814

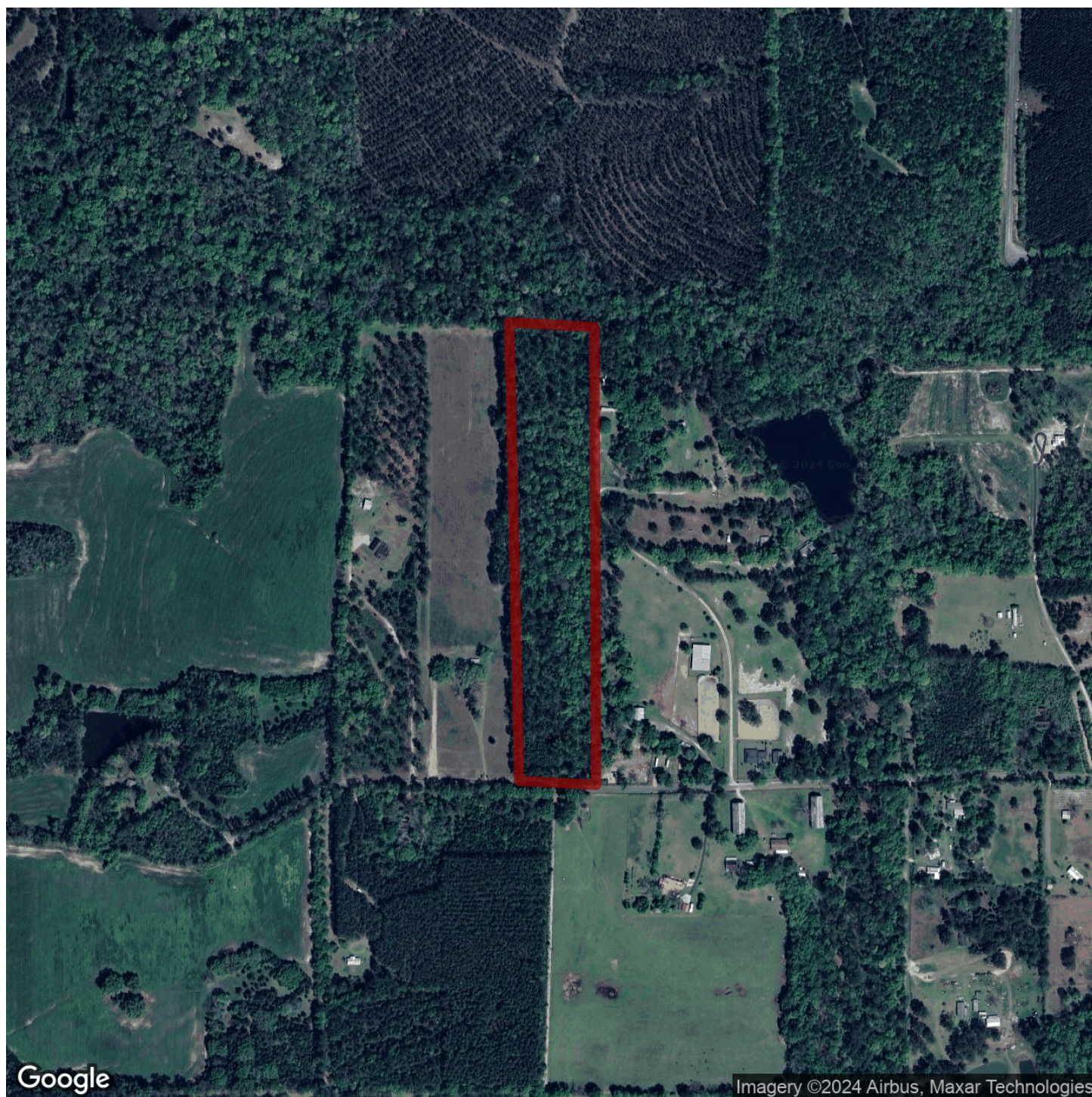




**DANIEL HAUTAMAKI**

danielh@selandgroup.com | 1-866-751-LAND | (850) 688-0814

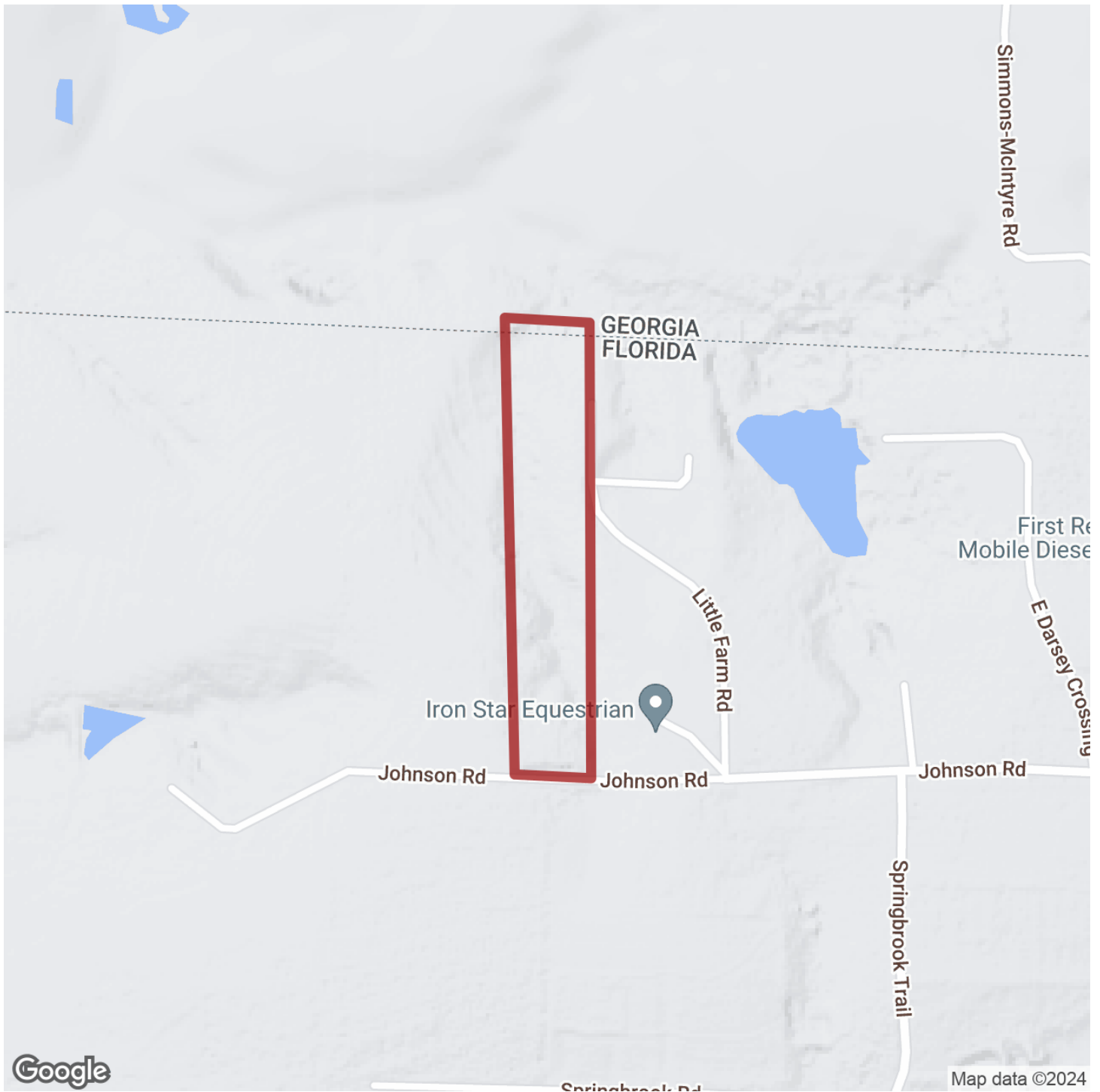




**DANIEL HAUTAMAKI**

danielh@selandgroup.com | 1-866-751-LAND | (850) 688-0814

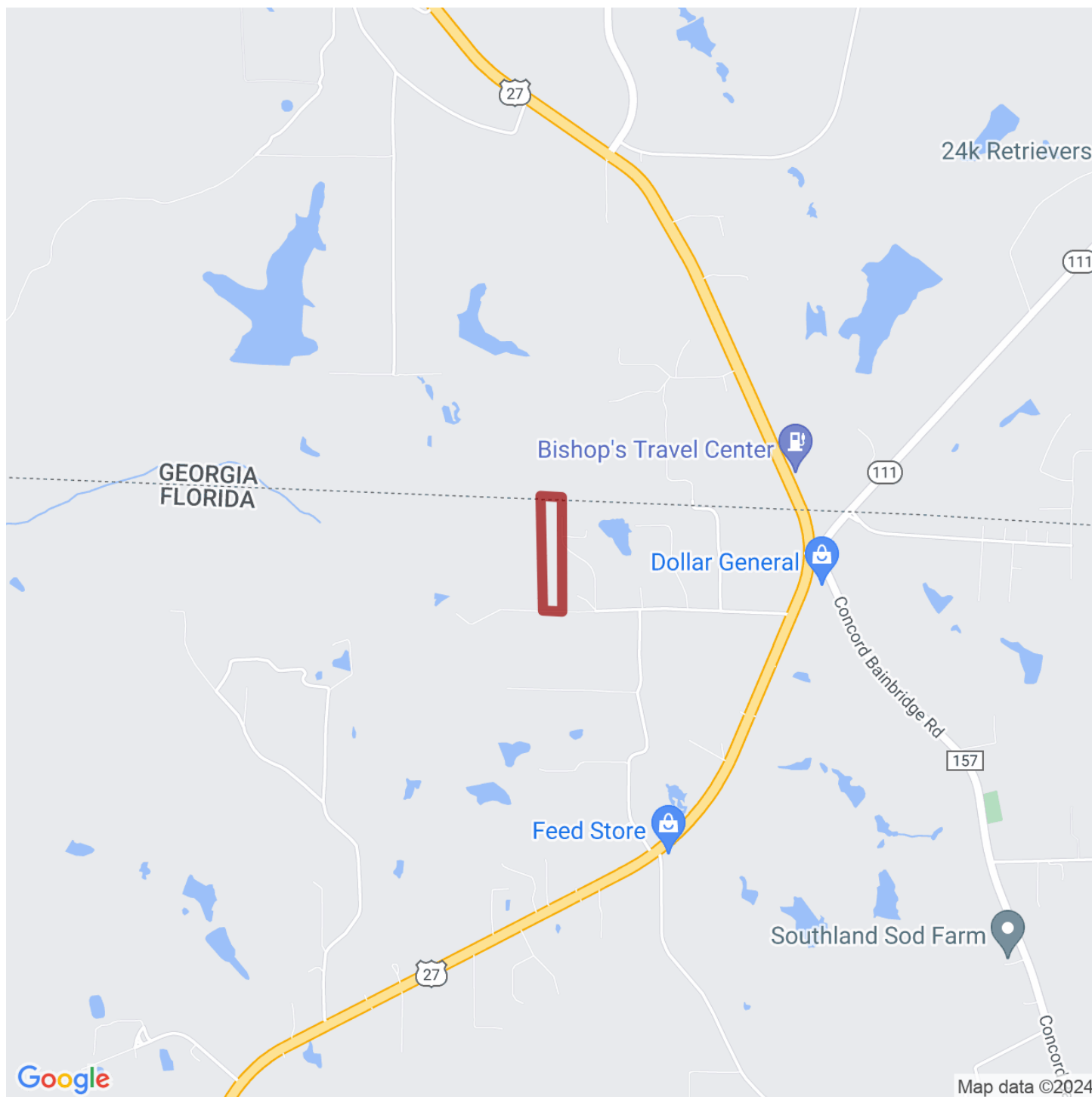




**DANIEL HAUTAMAKI**

danielh@selandgroup.com | 1-866-751-LAND | (850) 688-0814





**DANIEL HAUTAMAKI**

danielh@selandgroup.com | 1-866-751-LAND | (850) 688-0814

