

5.12+/- acres in Gulf County, Florida

Awesome 5.12 +/- acre homesite close to the Gulf with access to public utilities! Multiple homesite options with tons of road frontage! This versatile property is located in the city limits of Wewahitchka, FL less than 30 minutes from the Gulf of Mexico and Port St. Joe. The property has paved road frontage and is in two pieces on either side of a central road, creating options for development and improvement.

Make your new home in Wewahitchka ("Wewa" to the locals), a quiet town surrounded by farmland and timberland, within an easy drive to Gulf Coast beauty, charm and adventure. The location is less than 30 minutes to both Port St. Joe, FL and Panama City, FL. The property has access to city water and sewer, and power is on the boundary. The lot is wooded with beautiful mature longleaf pine. Just a few hundred feet down the road is T. L. James Park, a beautiful city park great for recreation and relaxation.

Give us a call today to schedule your tour of this great property!

Mini farm • \$51,200

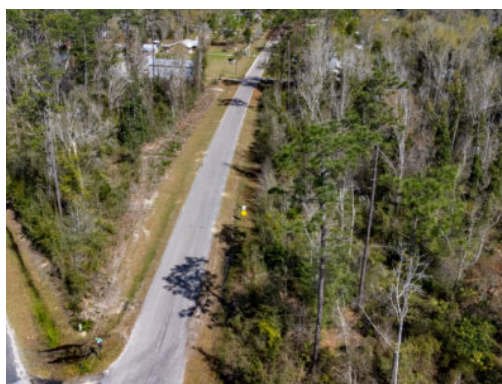
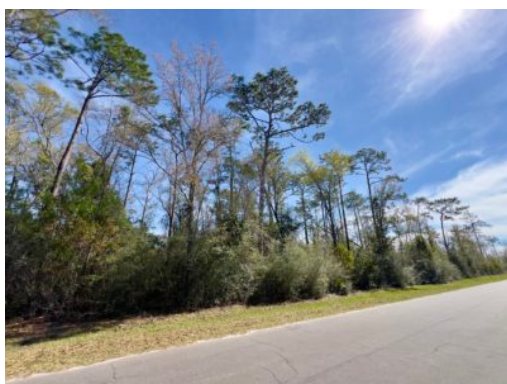
View online at <http://selg.biz/5841>



DANIEL HAUTAMAKI

danielh@selandgroup.com | 1-866-751-LAND | (850) 688-0814





DANIEL HAUTAMAKI

danielh@selandgroup.com | 1-866-751-LAND | (850) 688-0814





Google

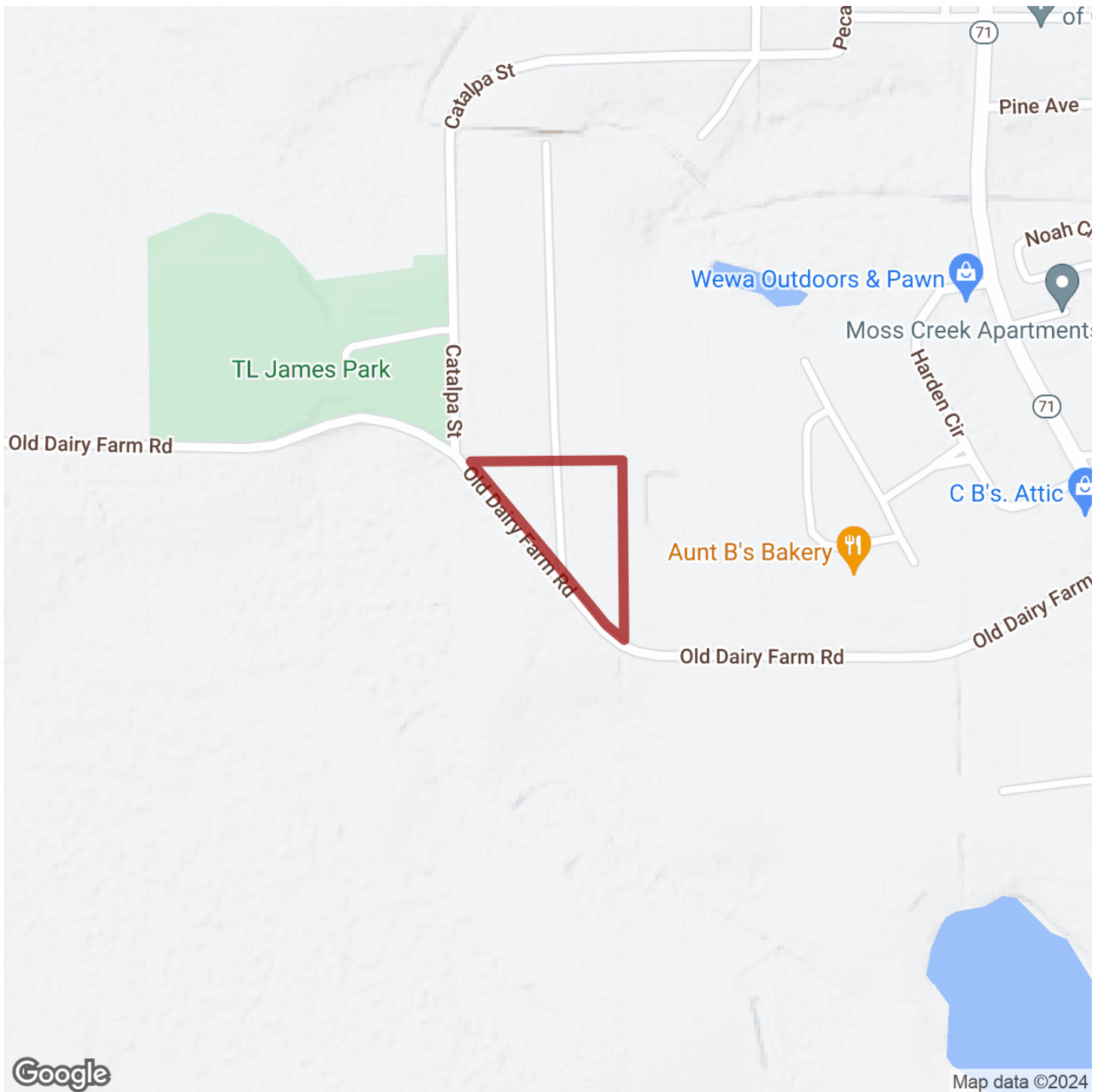
Imagery ©2024 Airbus, Maxar Technologies



DANIEL HAUTAMAKI

danielh@selandgroup.com | 1-866-751-LAND | (850) 688-0814

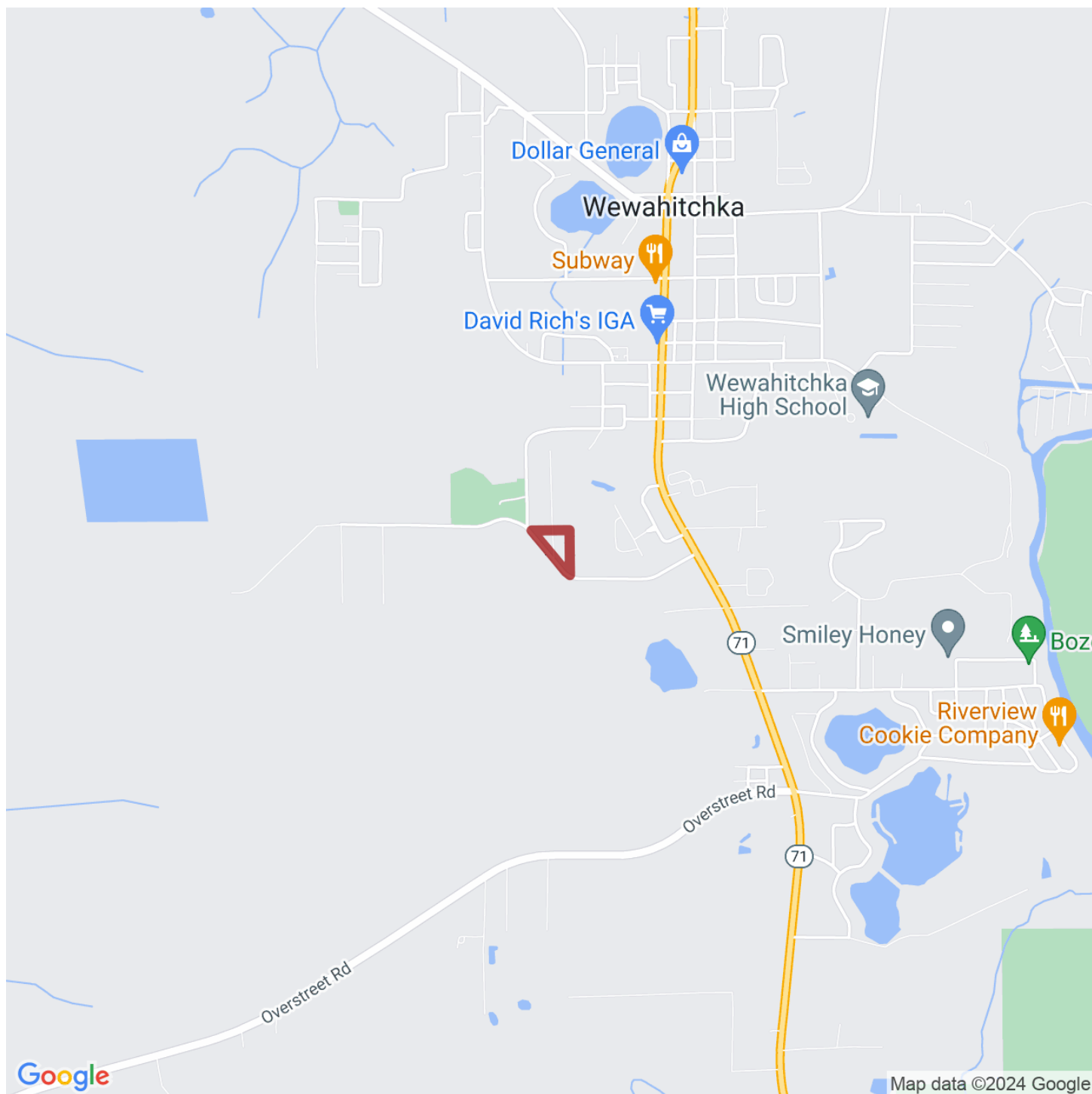




DANIEL HAUTAMAKI

danielh@selandgroup.com | 1-866-751-LAND | (850) 688-0814





DANIEL HAUTAMAKI

danielh@selandgroup.com | 1-866-751-LAND | (850) 688-0814

