

25+/- acres in Clay County, Alabama

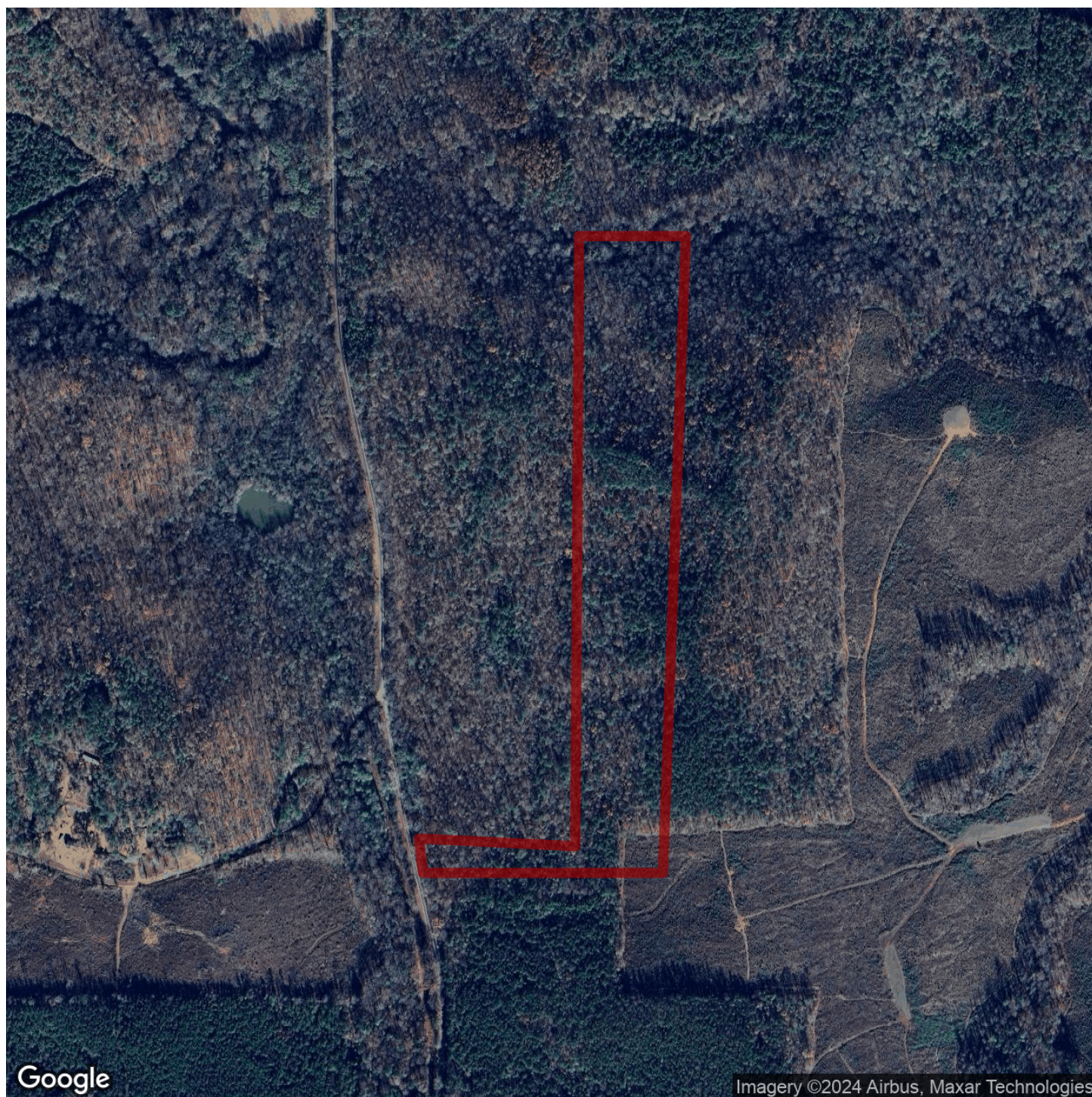
Beautiful off grid property consisting of 25+/- acres along a beautiful stretch of Partridge Creek. This property would be ideal for a small hunting tract, or an off grid getaway to build a cabin sitting above the beautiful creek. It is all wooded and features an impressive rock wall that runs alongside the creek up the hill. This is a very beautiful rural property with with a lot of potential for whatever you want it to be.

This property has access via deeded easement off of County Rd 7. it is located in Clay County, AL near the Coosa County line. Shown by appointment only. Please contact listing agent for more info.

Mountain • \$109,900

View online at <http://selg.biz/4432>





Google

Imagery ©2024 Airbus, Maxar Technologies

selandgroup.com

1-866-751-LAND





