

5.62+/- acres in Cleburne County, Alabama

A convenient country setting, majestic hardwoods and a beautiful long range view of the mountains in the distance. What else could you ask for?

This beautiful 5.62 +/- acre tract, located near the top of Turkey Haven Mountain, is part of a 38 +/- acre property being divided into as many as 4 parcels with reasonable covenants to protect your investment. This would be a great place to build that dream home or start generating cash flow with an AirBNB! Imagine having a place to get away from it all, but close enough to be convenient!!

Located about 7 miles from Ranburne, AL on County Road 852, this property is only 12 miles from the I-20 Abernathy Exit or the Hwy 46 Exit, 25 miles from Carrollton, GA; 32 miles from Oxford, Alabama and 75 miles from Atlanta, GA (distances are approximate)! Note: Take Red Hollow Road south from Hwy 46 to find CR 852/Turkey Haven Mountain Road.

Other lots are available!: Lot 2 = 6.34 +/- acres; Lot 3 = 10.92 +/- acres; Lot 4 = 15.05 +/- acres. Lot lines are approximate and these lots have not yet been surveyed to allow for flexibility in final lot acreages.

Don't miss your chance to purchase one of these great lots and begin enjoying the outdoors now! Please give me a call to schedule a private tour before these are gone!

Mini farm • \$84,300

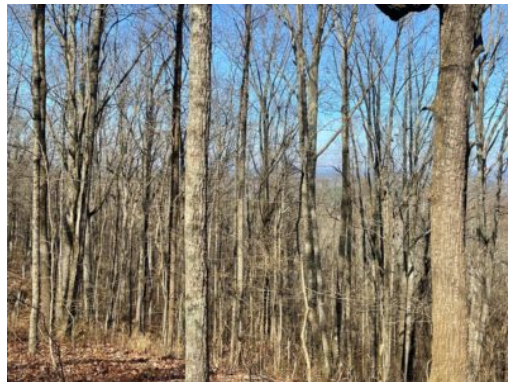
View online at <http://selg.biz/7013>



JESSE THOMPSON

jesse@selandgroup.com | 1-866-751-LAND | (770) 317-5235





JESSE THOMPSON

jesse@selandgroup.com | 1-866-751-LAND | (770) 317-5235





Google

Imagery ©2024 Airbus, Maxar Technologies



JESSE THOMPSON

jesse@selandgroup.com | 1-866-751-LAND | (770) 317-5235

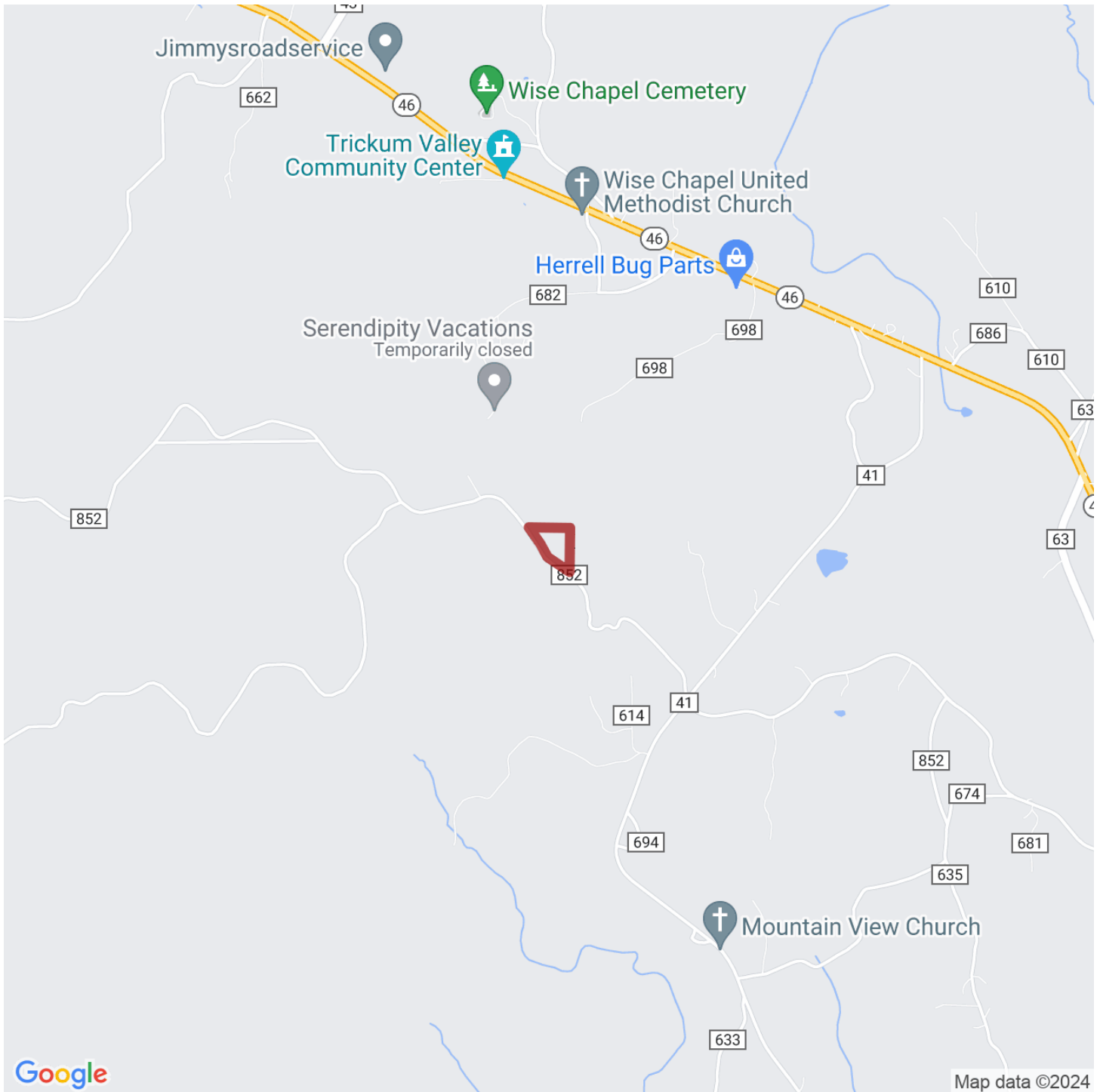




JESSE THOMPSON

jesse@selandgroup.com | 1-866-751-LAND | (770) 317-5235





JESSE THOMPSON

jesse@selandgroup.com | 1-866-751-LAND | (770) 317-5235

