

155+/- acres in Perry County, Alabama

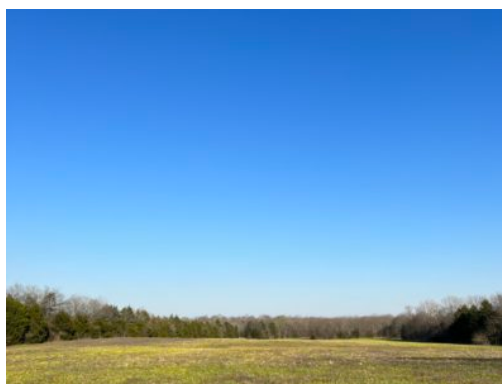
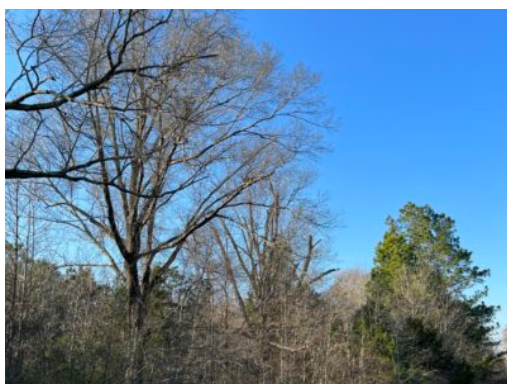
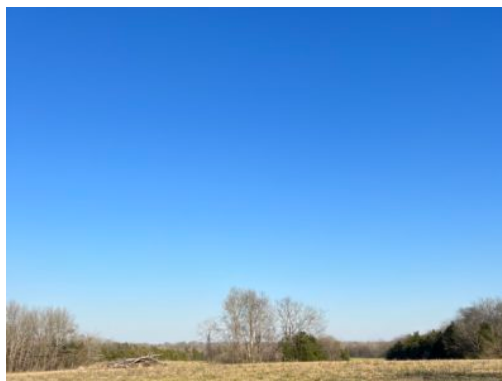
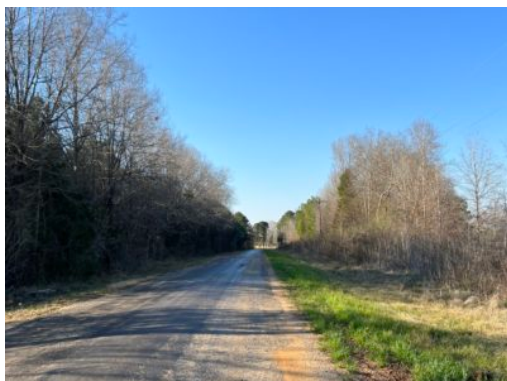
155 +/- acres in Perry County Black Belt

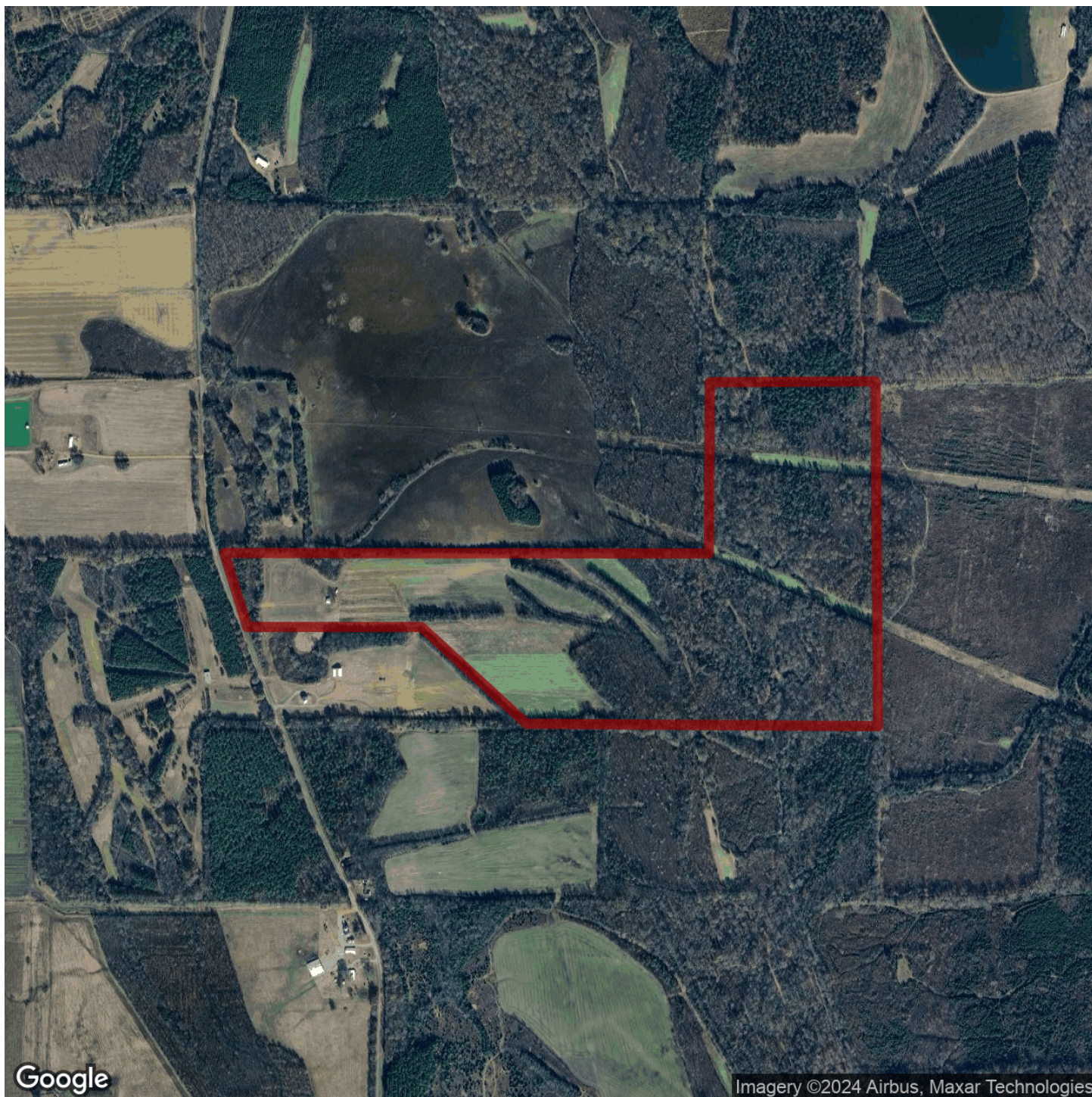
This property has it all!!! The diversity and location of the this tract makes it the perfect place to settle and make a home or have one heck of a hunting mecca. Approximately 40 acres is made up of tillable farm land that could be planted for wildlife and dove fields, turned into pasture or leased to a local farmer. There are two transmission power lines with miles and miles of views both with hardwood timber on either side. Washington Creek runs through the East part of the property winding through both high lines and hardwood timber. The creek runs from Perry County down to Dallas County and is known for its fossils and sea shells lining the banks and creek bed. This tract is surrounded by larger land owners all on deer and wildlife management programs. The road frontage is lined with mature timber with several potential homesites near the entrance that allows easy access to county water and power. (The property boundary is solid red in MapRight map)

The property is located approximately 78 miles from Birmingham, 78 miles from Montgomery, 161 miles from Mobile, 56 miles from Tuscaloosa, 26 miles from Selma and 3 miles from Marion. This property is shown by appointment only. Please contact **Cooper Holmes @ 205-292-6356** or **Kelly McClendon @ 251-744-4915** for a tour.

Acreage with Homesite · \$387,500

View online at <http://selg.biz/0151>





Google

Imagery ©2024 Airbus, Maxar Technologies

selandgroup.com

1-866-751-LAND



