

45+/- acres in Etowah County, Alabama

Here is a great tract with lots of possibilities. Located a mile or less from the Boaz City Limits, just inside Etowah County. It will be Boaz or Sardis schools. The property features multiple homesites and would make a great mini farm. There is a nice 10-to-12-acre coastal field currently in hay production. The remainder of the property is in mostly hardwood timber. If you are looking for something to subdivide for multiple homesites, there is around 1,500 feet of road frontage on Buffington Road. The owner has seen both deer and turkey on the property. There also a homesite already in place with septic, water meter, and power. Shown strictly by appointment only.

Acreage with Homesite • \$315,000
View online at <http://selg.biz/6396>



MATT BURNETT

matt@selandgroup.com | 1-866-751-LAND | (256) 572-1474

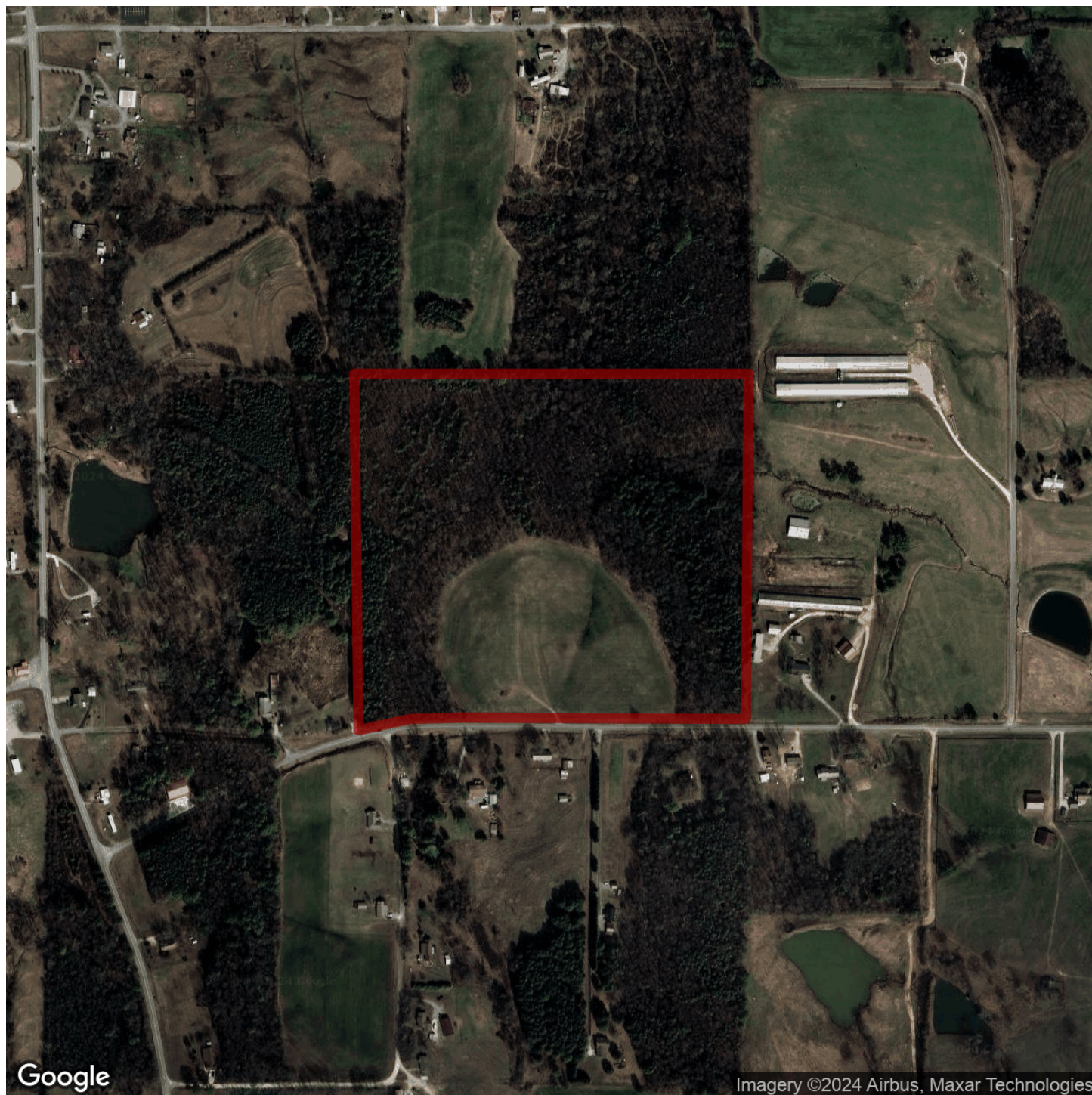




MATT BURNETT

matt@selandgroup.com | 1-866-751-LAND | (256) 572-1474





MATT BURNETT

matt@selandgroup.com | 1-866-751-LAND | (256) 572-1474

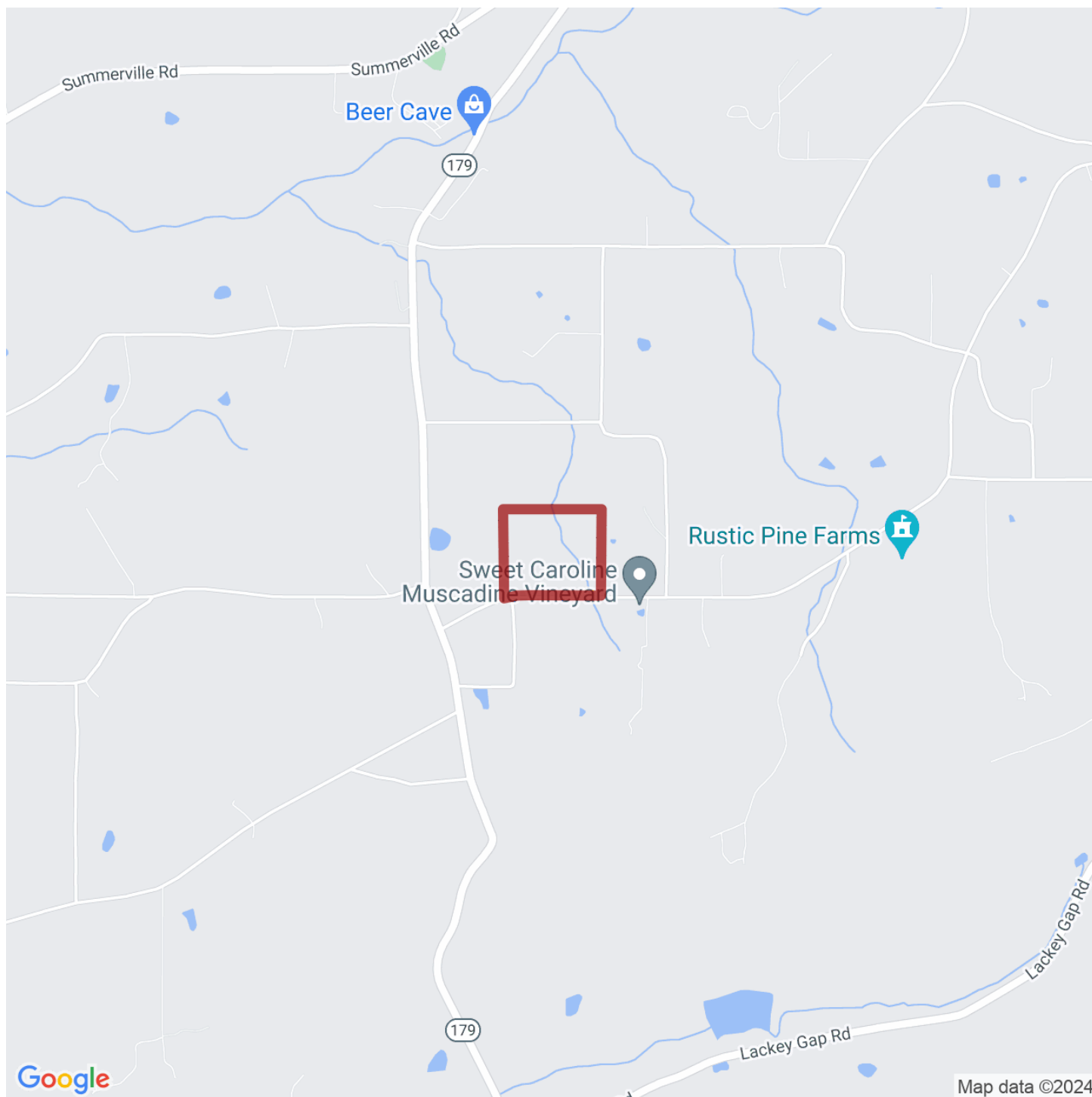




MATT BURNETT

matt@selandgroup.com | 1-866-751-LAND | (256) 572-1474





MATT BURNETT

matt@selandgroup.com | 1-866-751-LAND | (256) 572-1474

