

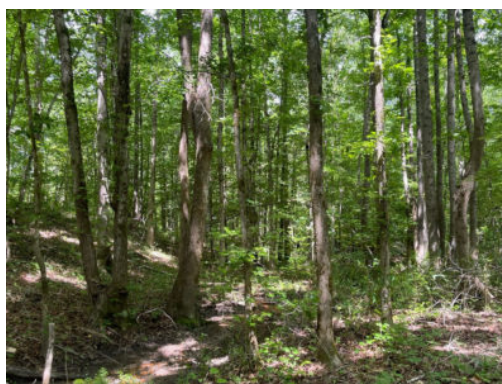
# 40+/- acres in Chambers County, Alabama

This one of a kind tract has several great features ! The tract consist of mature pine timber, along with a hardwood SMZ creek bottom. There is a shooting house overlooking a food plot, a pole barn, and a great road system already established on this property. Power is available at the road, making the potential for a home site a great asset. The property has had a history of large bucks and several turkeys as well. The property is located within 45 minutes of Auburn as well.

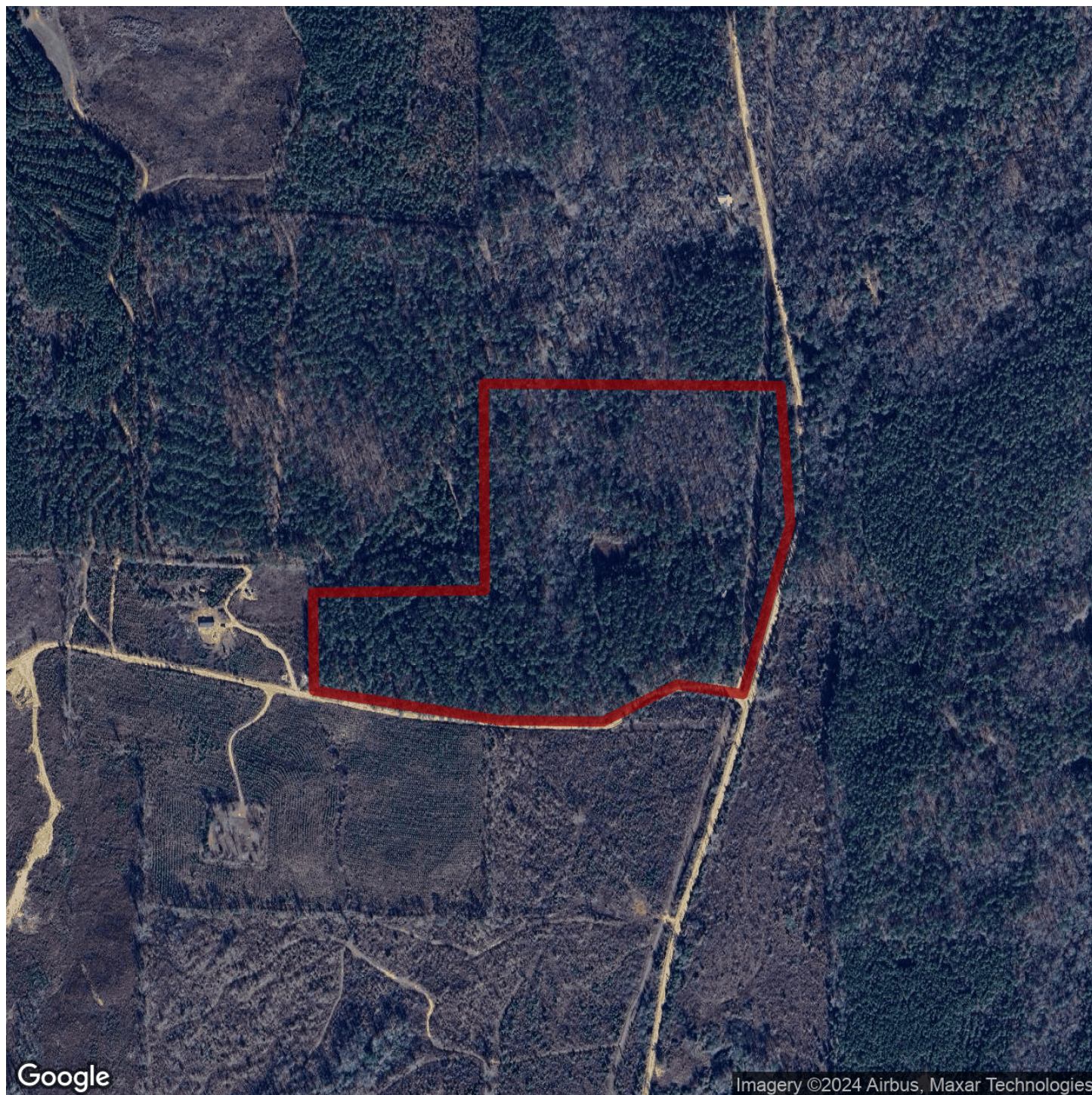
**Acreage with Homesite · \$129,999**

**View online at <http://selg.biz/9356>**









Google

Imagery ©2024 Airbus, Maxar Technologies

[selandgroup.com](https://selandgroup.com)

1-866-751-LAND







