

# 317+/- acres in Coosa County, Alabama

**SOLD!!** Welcome to this great timber and recreational investment property located in NW Coosa County just minutes from Lay Lake and Pursell Farms (Farm Links). The property totals 317 +/- ac and consist of 5 year old pine plantations with several areas left in mature hardwood timber including the large SMZ areas.

The owner has recently had extensive dozier work done to clean up existing roads as well as build new ones. There is over 4 miles on internal roads making it easy to access all portions of the property.

Another wonderful feature of this property is the over 1.6 miles of Paint Creek that flows through or is the boarder of the tract. It is hard to find properties with this size creek on it in this area. This truly is a place the entire family could enjoy.

The property is roughly 20 minutes to Sylacauga and just over an hour to Birmingham.

**Timberland • \$491,350**

**View online at <http://selg.biz/2187>**



**JEFF HARDY**

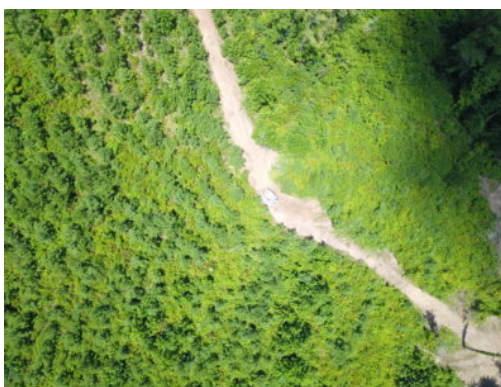
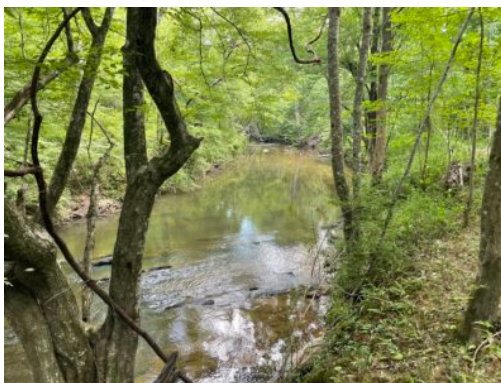
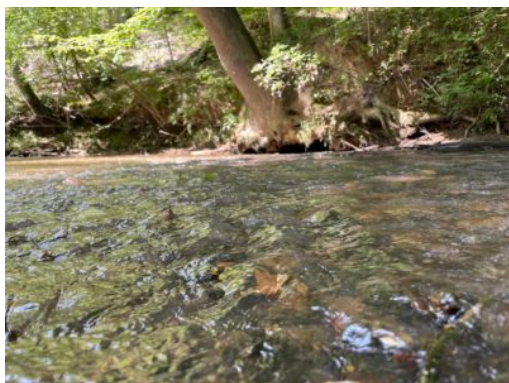
jeff@selandgroup.com | 1-866-751-LAND | (256) 749-3950







# Southeastern LAND GROUP

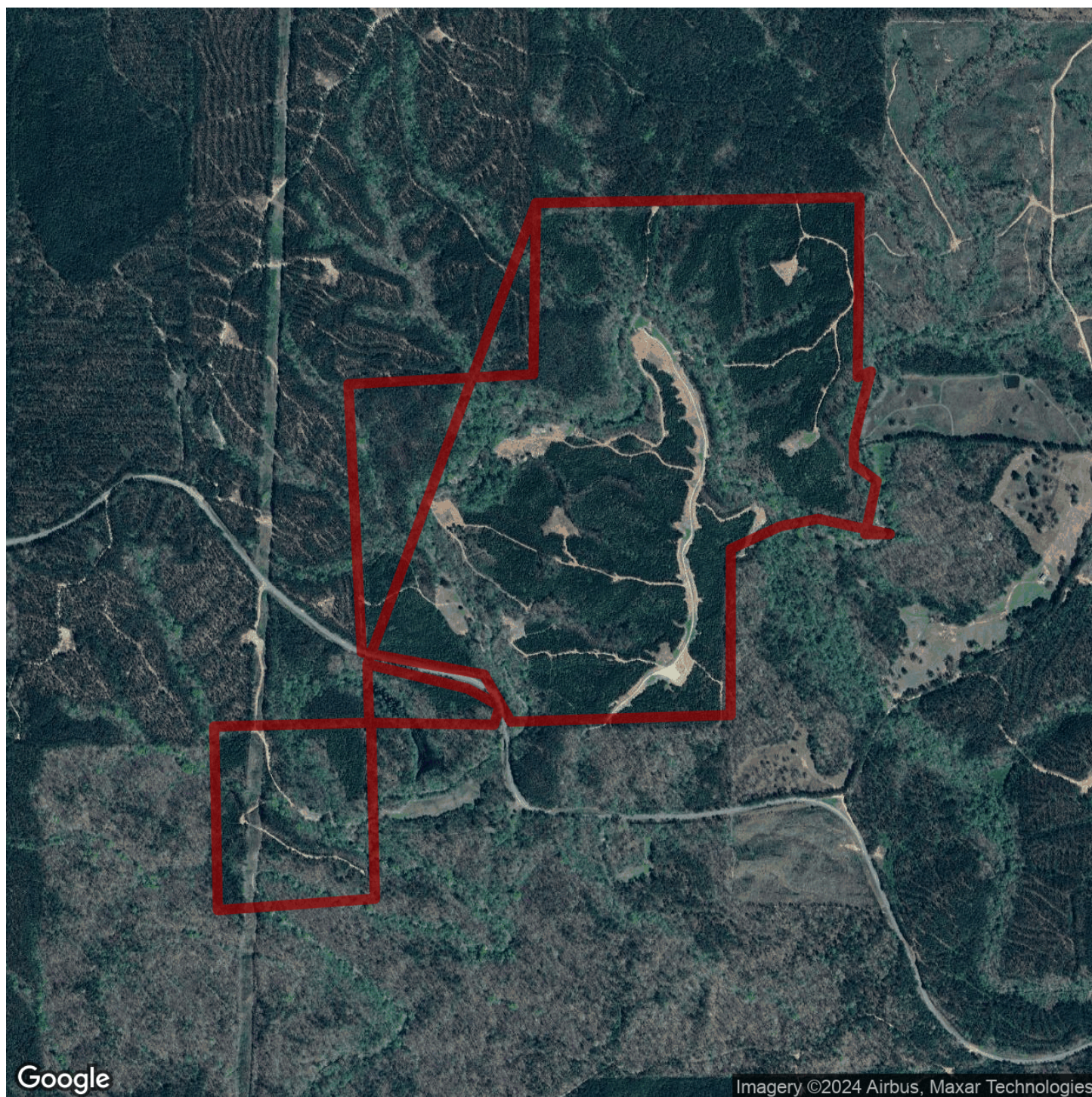


**JEFF HARDY**

jeff@selandgroup.com | 1-866-751-LAND | (256) 749-3950





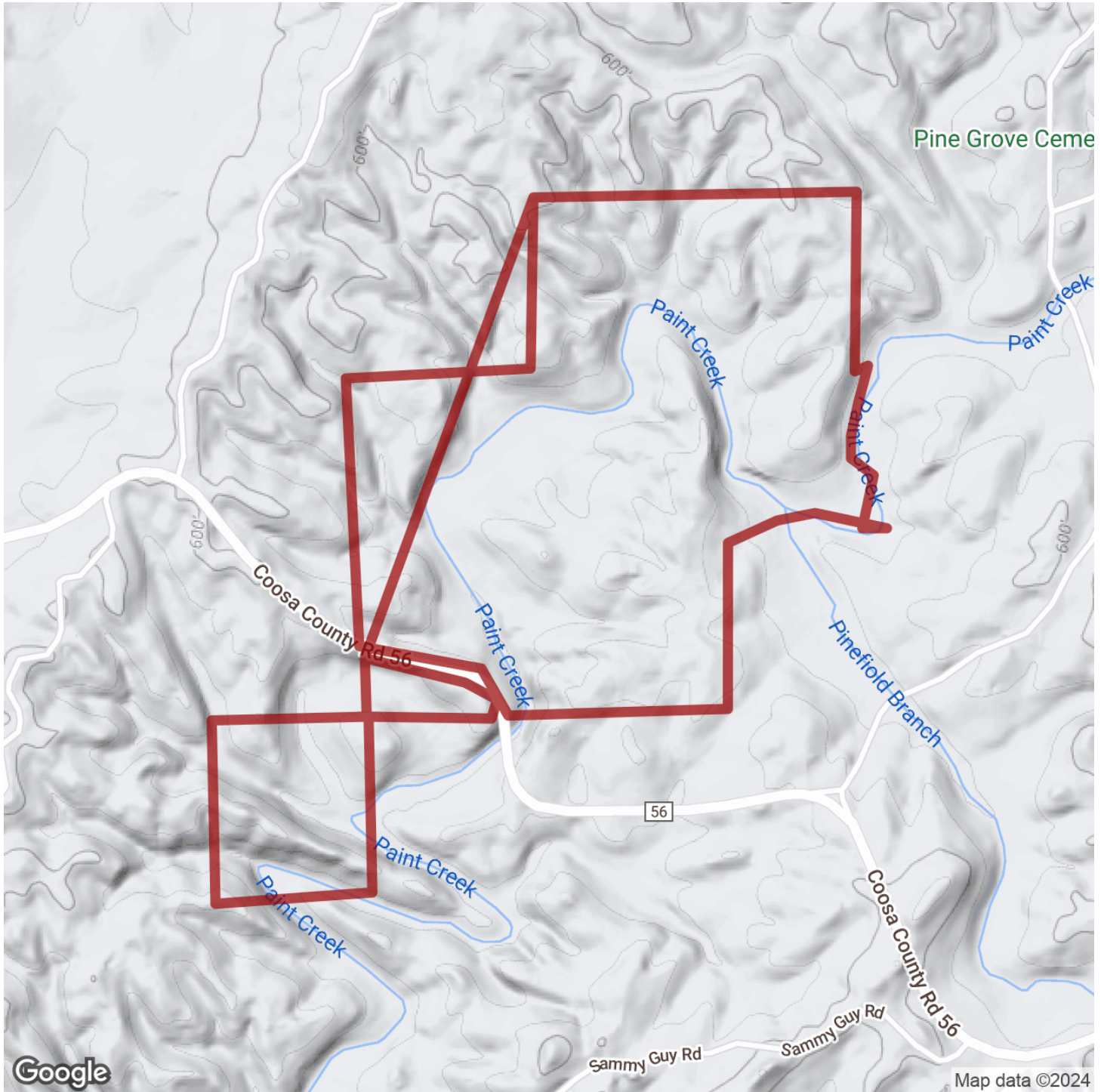


**JEFF HARDY**

jeff@selandgroup.com | 1-866-751-LAND | (256) 749-3950





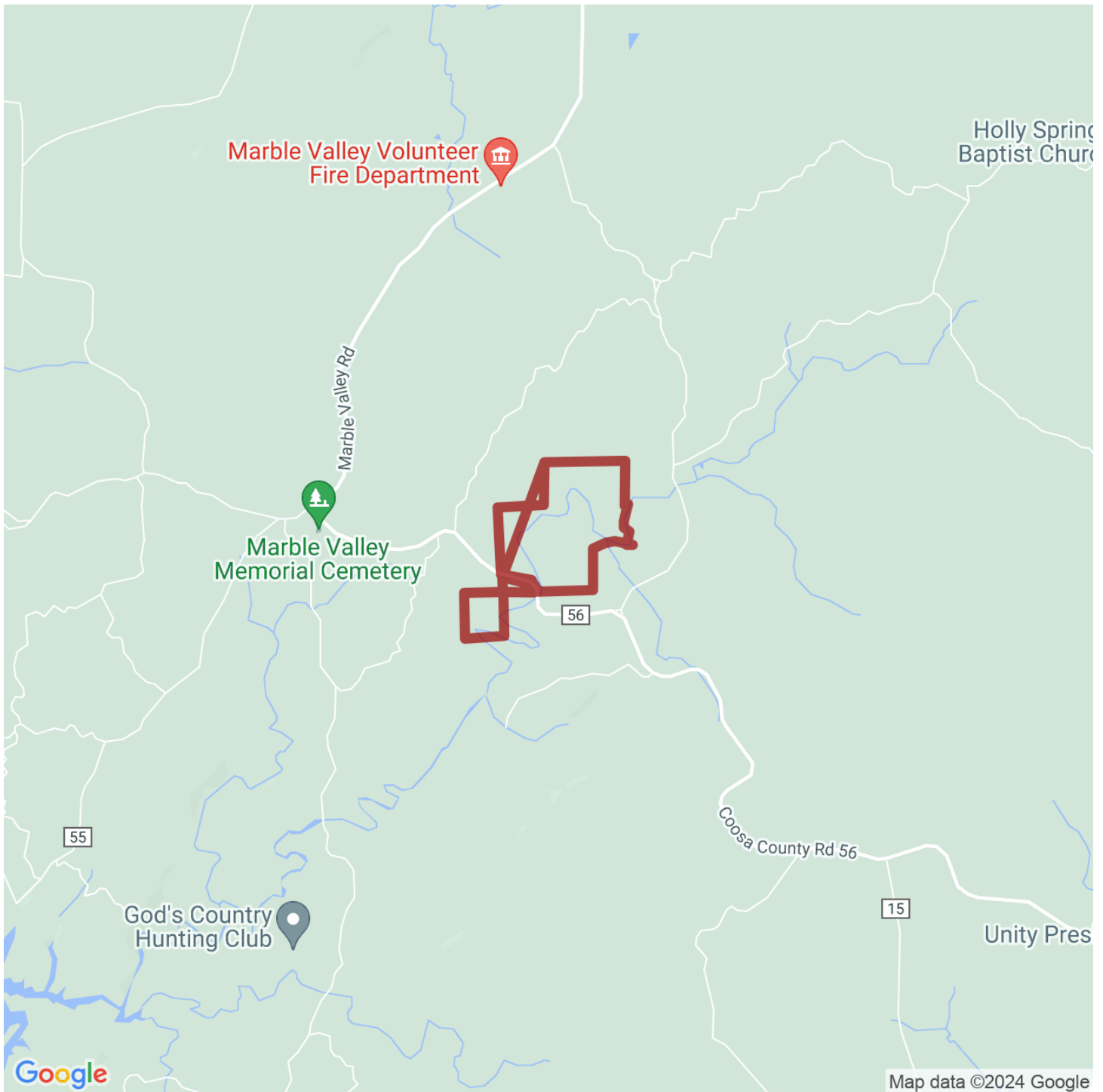


**JEFF HARDY**

jeff@selandgroup.com | 1-866-751-LAND | (256) 749-3950







**JEFF HARDY**

jeff@selandgroup.com | 1-866-751-LAND | (256) 749-3950

