

14+/- acres in Clay County, Alabama

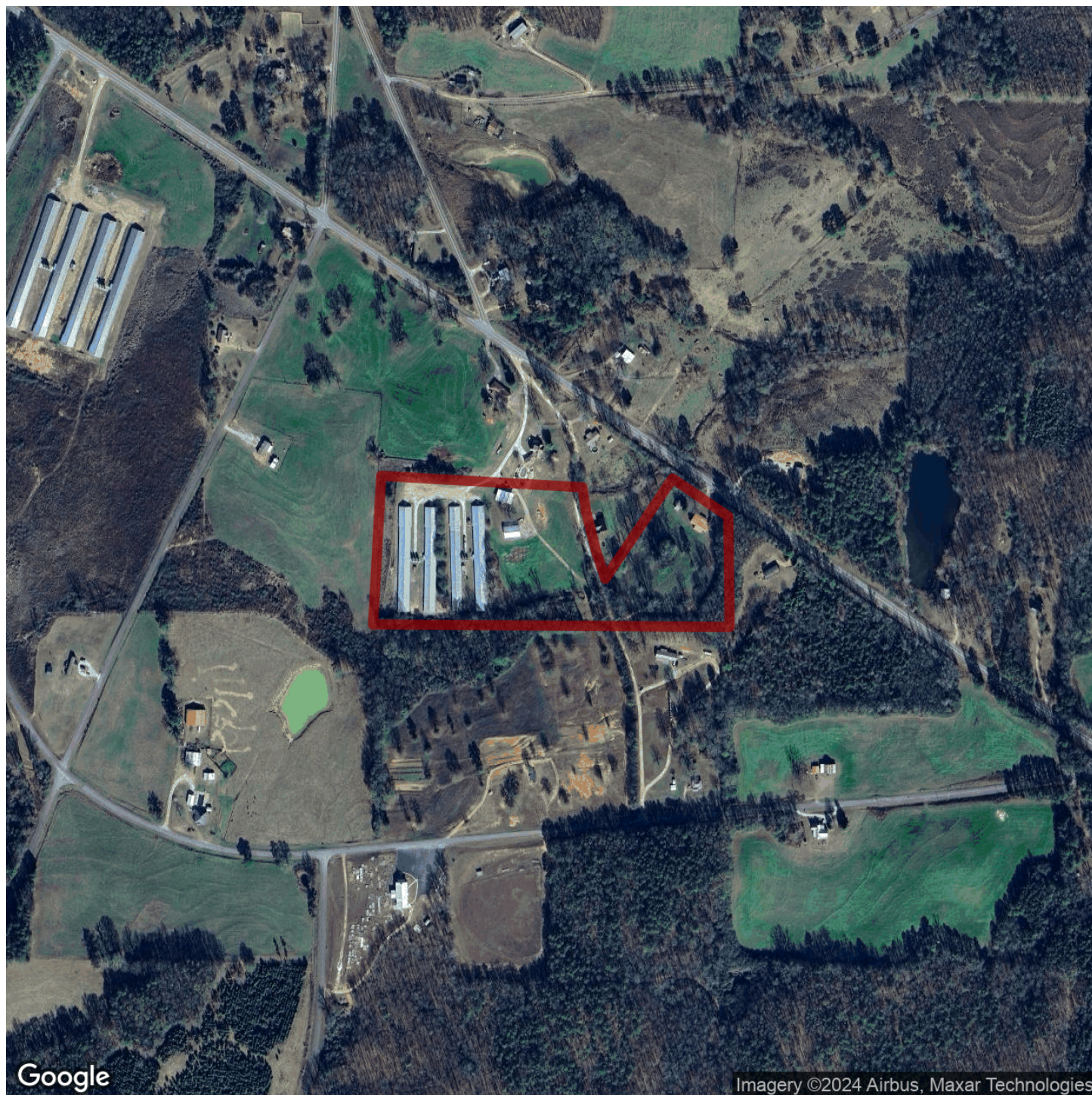
Meek Farm is a 4 house broiler poultry farm for sale located in Clay County Alabama on 14+/- acres with a 3 bedroom/2 bath mobile home, some open land, and a creek. Gross annual income on Meek Farm has a historical average of about \$150,000. There has also been a recent raise in pay for the Koch's- contracted farm, so next year could be even better. 3 of the houses are 43x400 and built in 1999. 1 of the houses is 40x400 and was built previously. The farm runs on well water with public water available and runs on Natural gas. The houses are all equipped with Choretronics controllers and are currently operating on top pay. Meek Farm is a great opportunity to enter the poultry business with a home already on the property and a lower downpayment point. The farm is well cared for and currently growing for the Ashland Koch's complex.

Meek Farm is a biosecure location. No entry without an appointment and a PoultrySouth Team member present on the property. All potential purchasers must be prequalified prior to setting an appointment to view the property. Qualified purchasers should expect to put down at least \$75,000 in cash or equity. All farm visitors must abide by all PoultrySouth and Koch's Foods procedures. Call a PoultrySouth Team member to find out how to prequalify.

Poultry Farm • \$399,000

View online at <http://selg.biz/2403>





Google

Imagery ©2024 Airbus, Maxar Technologies

selandgroup.com

1-866-751-LAND





