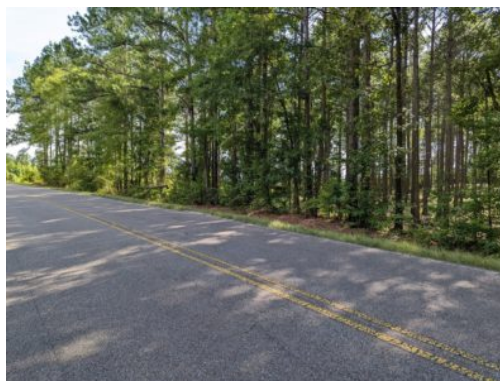


5+/- acres in Elmore County, Alabama

What a beautiful place to build a home! Absolutely **gorgeous, mature timber, a freshly mulched lot, peace and quiet**; these are the things you will have when you build your home here. And it is **less than a mile to the Lake Martin** on Little Steel Bridge rd. You can also be in **Eclectic, Central, Equality, Alex City, and Wetumpka within minutes**. Due to the frontage on Little Steel Bridge and Granger, there are multiple places to have access to this beautiful lot. There is a minimum square footage of 1800 sq ft to build here and no mobile homes are allowed. Have **woods and water right out your door** when you live on this stunning lot. Also, there is **additional acreage available**. Call me with any questions. **Scott Mills 334-300-6663**

Acreage with Homesite · \$89,900
View online at <http://selg.biz/7949>





Google

Imagery ©2024 Airbus, Maxar Technologies

selandgroup.com

1-866-751-LAND



