

# 80+/- acres in Autauga County, Alabama

**Crazy J Farm** is a Broiler Farm located in Northwest Alabama near Mount Hope in Lawrence County, Alabama. This farm currently grows for Pilgrims' Russellville Complex. They grow a 9# bird on a 60 day grow out.

Crazy J Farm is a 4-house farm. The houses are 46x565 and were built in 2016. A small amount of updates will need to be done with the purchase of this farm.

The farm consists of 80+/- Acres with a 2010 model 16X80 mobile home.

Poultry House Equipment in the 46x565 houses include:

- Choretronics 2 controllers
- Choretime C2plus feeders
- Choretime Drinkers
- CT Galvanized Tunnel Fans
- Solid Walls
- LED Lights
- CT Brooders
- 185 KW Taylor Generator

The farm operates on propane gas and has city water. A pole barn shop is conveniently located on the farm and features an office and plenty of room to store and work on equipment. The wrap around side shed on the shop is also a great area to store farm equipment. Crazy J Farms is currently using freezers for mortality.

The gross annual income for the farm has ranged from \$300,000 – \$350,000. Growing the large bird allows this farm the opportunity to push pounds each grow out. This farm was built and set up to maximize the large bird grow out, as well as make the workload easier on the grower.

Additional information about the home and poultry farm is available from the listing agent.



**Southeastern**  
LAND GROUP



This farm is a bio secure area, no visitors are allowed without a SELG agent being present. Before a farm visit can be set up a down payment of \$300,000 in cash must be proven. Any agents wishing to show the farm must complete a Southeastern Land Group Co-Brokerage Agreement Form for approval. No showings inside the bird area while birds are present.

**Poultry Farm • \$1,700,000**  
**View online at <http://selg.biz/8572>**

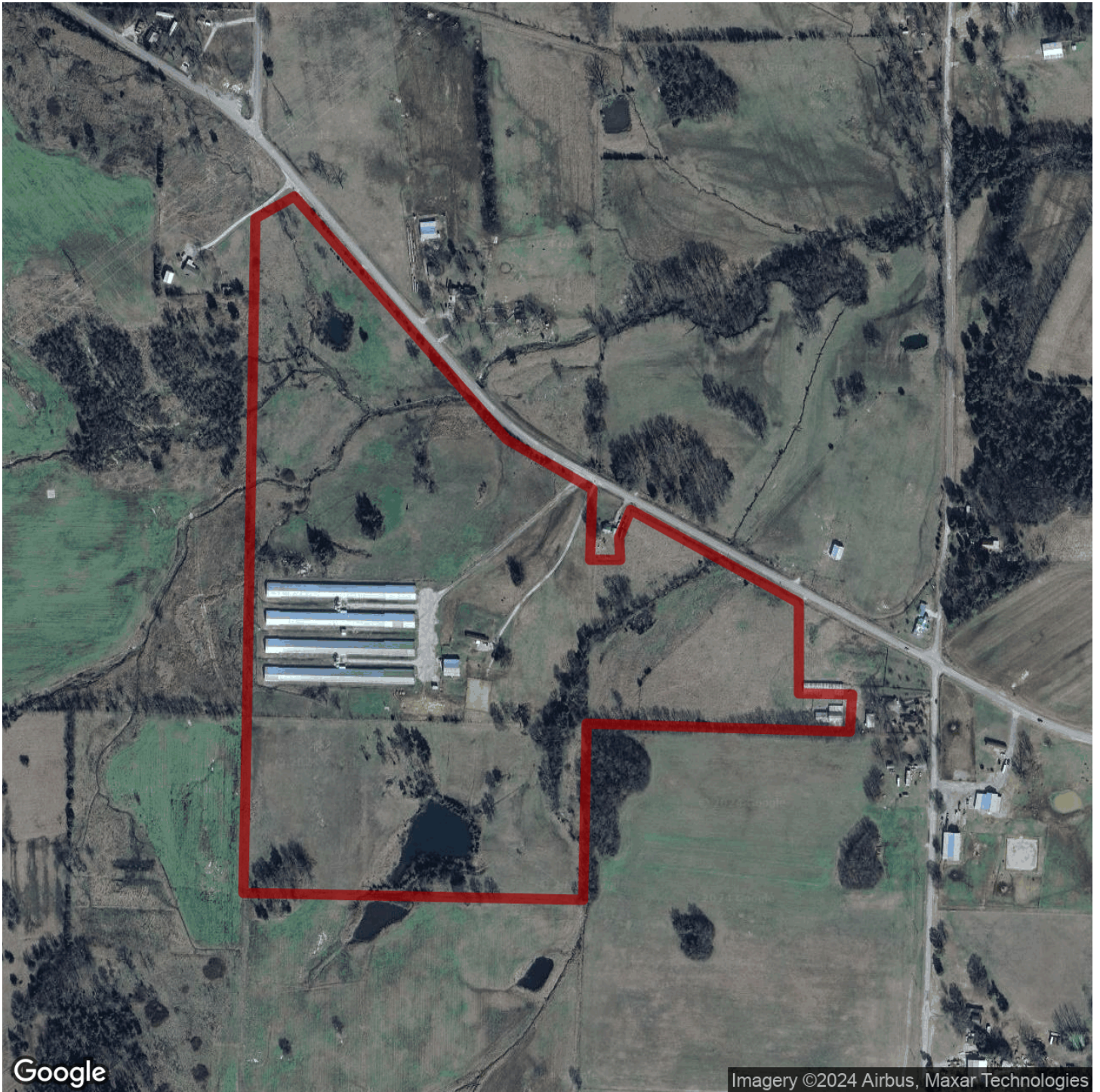
[selandgroup.com](http://selandgroup.com) | 1-866-751-LAND











Google

Imagery ©2024 Airbus, Maxar Technologies

[selandgroup.com](http://selandgroup.com)

1-866-751-LAND







